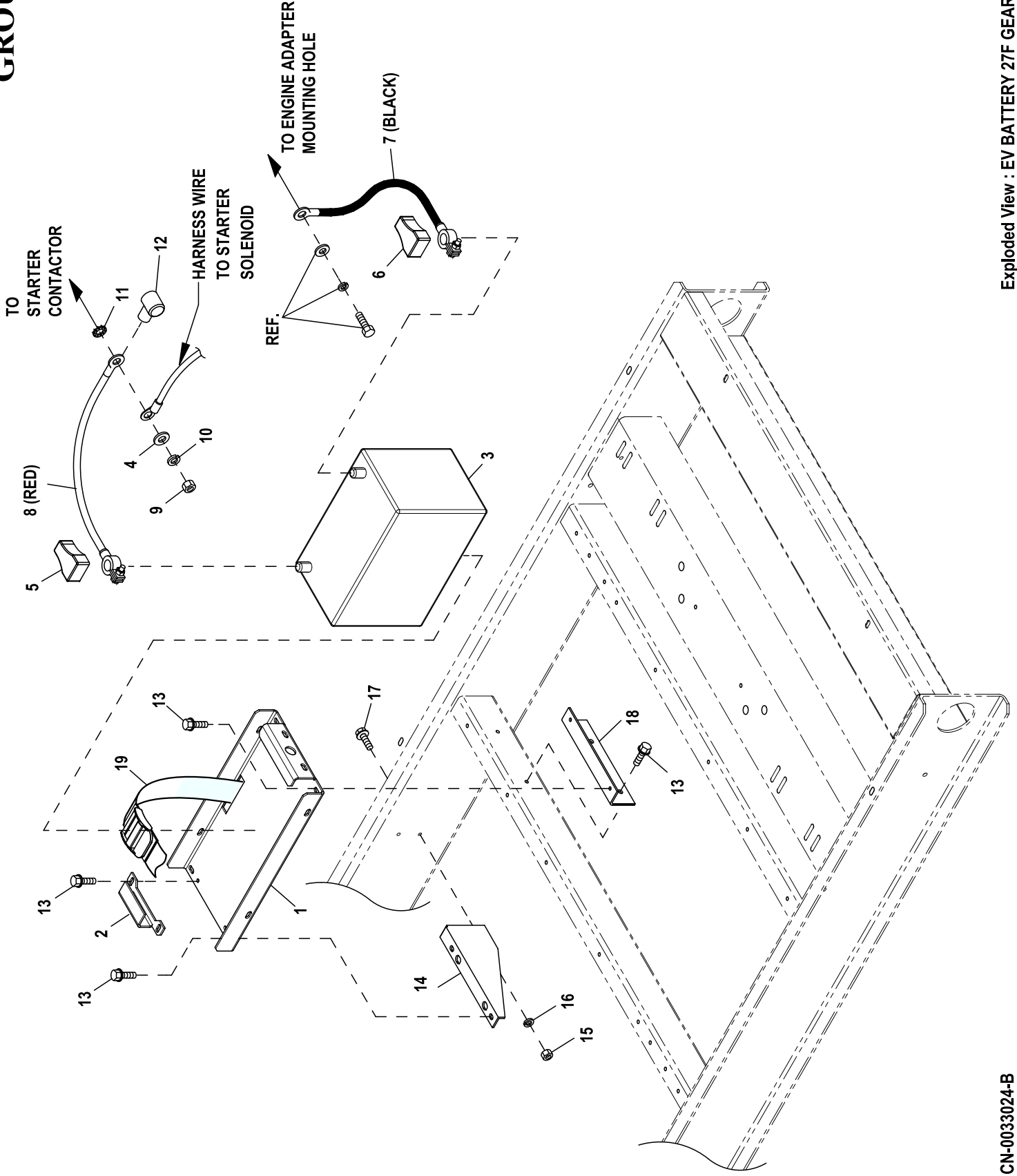


GROUP C



EXPLODED VIEW: EV BATTERY 27F GEAR BOX**DRAWING #: 0G0775****GROUP C**

ITEM	PART#	QTY.	DESCRIPTION
(1)1	0F3408AST0R	1	TRAY BATTERY 27F
2	0F3411	1	STRAP BATTERY RETAINMENT
3	G058665	1	BATTERY 12VDC 90-AH 27F
4	G022131	1	WASHER FLAT 3/8-M10 ZINC
5	050331A	1	BATTERY POST COVER RED +
6	G050331	1	BATTERY POST COVER BLK -
7	038805Z	1	CABLE BATTERY BACKL #1 X 26.00
8	038804U	1	CABLE BATTERY RED #1 X 28.00
9	G045771	1	NUT HEX M8-1.25 G8 YEL CHR
10	G022129	1	WASHER LOCK M8-5/16
11	G027482	1	WASHER SHAKEPROOF EXT 5/16 STL
12	G075763	1	BOOT BATTERY CABLE
13	0C2454	8	SCREW THF M6-1 X 16 N WA Z/JS
14	0F3409	1	SUPPORT BATTERY TRAY
15	G022097	2	WASHER LOCK M6-1/4
16	G049813	2	NUT HEX M6 X 1.0 G8 YEL CHR
17	G042568	2	SCREW HHC M6-1.0 X 20 G8.8
18	0G0783	1	SUPPORT 27F BATTERY
19	0J3501	1	STRAP BATTERY 1.5X36"

NOTES (UNLESS OTHERWISE SPECIFIED):

(1) SHEET METAL PARTS LISTED IN THE BOM TABLE, PRIOR TO 1/1/16, ARE REPRESENTING GENERIC

PARTS (NO COLOR) :

- MANUFACTURING: FOR CORRECT MATERIAL AND COLOR REFER TO SAP BOM.
- CUSTOMER: WHEN ORDERING REPLACEMENT PARTS ENTER BASE NUMBER (FIRST 6 DIGITS ONLY) IN THE SYSTEM FOR CORRECT MATERIAL AND COLOR (FOR REFERENCE SEE GUIDELINE 0H7169).