

0D4520

LEGEND

- C = CLOSING COIL (DUAL COIL BOBBIN)
M1 = SOURCE SELECTING LIMIT SWITCH
M2 = SOURCE SELECTING LIMIT SWITCH
TD1 = POWER SWITCHING CONTACTS
TD2 = POWER SWITCHING CONTACTS
AUX1 = AUXILIARY SWITCHES
AUX2 = AUXILIARY SWITCHES

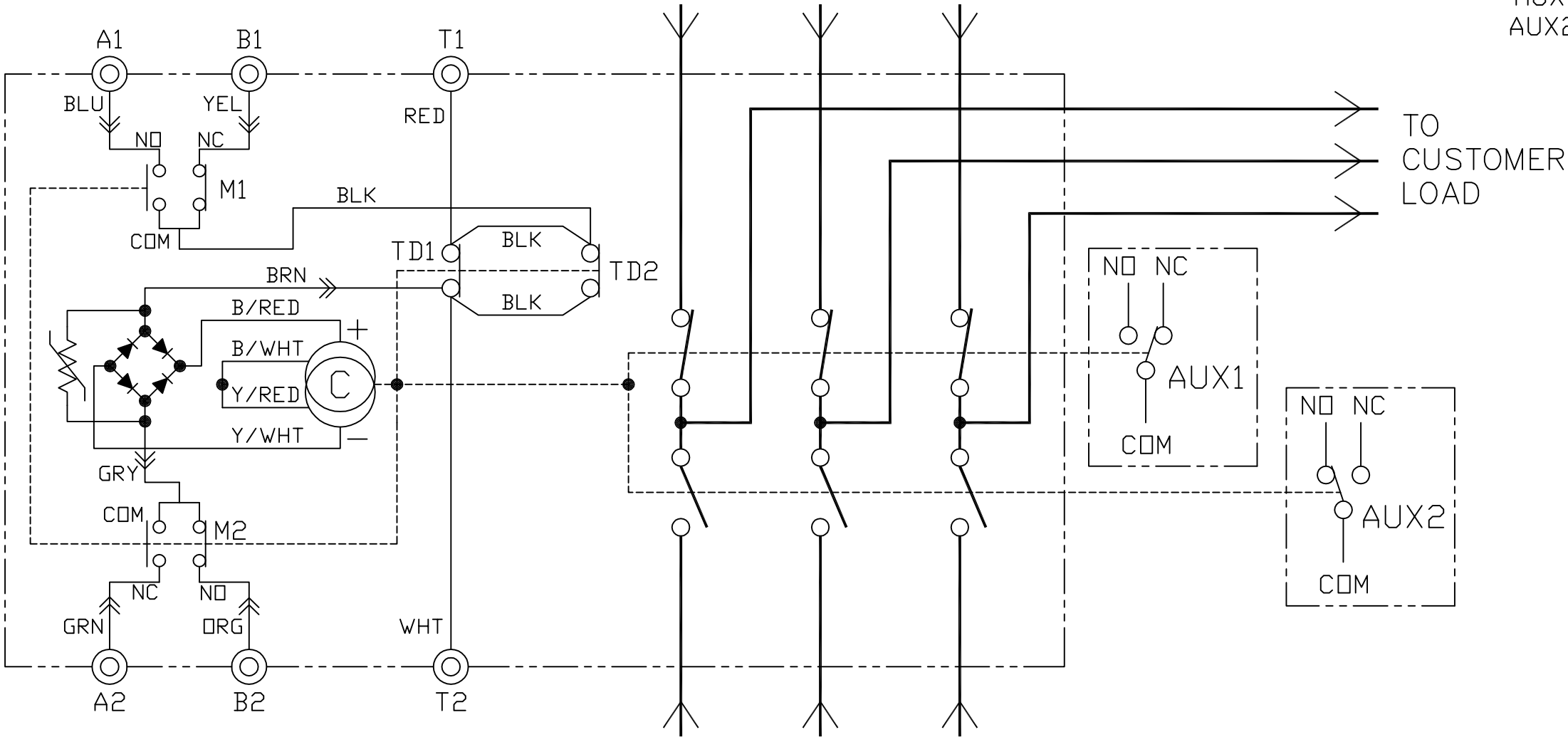
WIRE COLORS

- BLU = BLUE WIRE
YEL = YELLOW WIRE
RED = RED WIRE
BLK = BLACK WIRE
BRN = BROWN WIRE
GRY = GREY WIRE
GRN = GREEN WIRE
ORN = ORANGE WIRE
WHT = WHITE WIRE
B/RED = BLUE INSUL. ON TER./
WITH RED WIRE
B/WHT = BLUE INSUL. ON TER./
WITH WHITE WIRE
Y/RED = YELLOW INSUL. ON TER./
WITH RED WIRE
Y/WHT = YELLOW INSUL. ON TER./
WITH WHITE WIRE

SWITCH POSITION		UTILITY	NEUTRAL	STANDBY
AUX. 1	COM-NC	X	0	0
	COM-NO	0	X	X
AUX. 2	COM-NC	0	0	X
	COM-NO	X	X	0

X = CLOSED 0 = OPEN

"A" POWER SOURCE (UTILITY)



"B" POWER SOURCE (STANDBY)

NOTE:
ALL CONTACTS SHOWN WITH
MAIN POWER CONTACTS CLOSED
IN UTILITY POSITION

GENERAC CORPORATION OWNS THE COPYRIGHT OF THIS DRAWING
WHICH IS SUPPLIED IN CONFIDENCE AND MUST NOT BE USED FOR
ANY PURPOSE OTHER THAN FOR WHICH IT IS SUPPLIED WITHOUT
THE EXPRESS WRITTEN CONSENT OF THE GENERAC CORPORATION.

© GENERAC CORPORATION. 1997

EST. WT.

FINAL WT.

DO NOT SCALE

ALL DIMENSIONS AND
TOLERANCING PER
ASME Y14.5M-1994

UNLESS OTHERWISE
SPECIFIED :

ALL XX DIM. --- ±.4 MM
ALL XX.X DIM.--- ±.4 MM
ALL XX.XX DIM.--- ±.15 MM
ALL ANGLES ----- ±1°

DRAWING TITLE

W-TYPE W/NEUTRAL TRANS.
SWITCH SCHEMATIC DIAGRAM

MATERIAL

N/A

DWN

JSD

DATE

4/18/01

MFG

N/A

DATE

N/A

CHKD

JJJ

DATE

4/18/01

APPD

FXW

DATE

4/18/01

RELEASED FOR
PRODUCTION

BY

J. JONAS

DATE

4/18/01

GENERAC CORP
Waukesha

P.O. BOX 8
WAUKESHA, WIS. 53187

FILE
NAME

0D4520.DWG

SIZE B

SCALE

1 = 1

FIRST
USE

GTS

DWG NO.

0D4520

REV

—