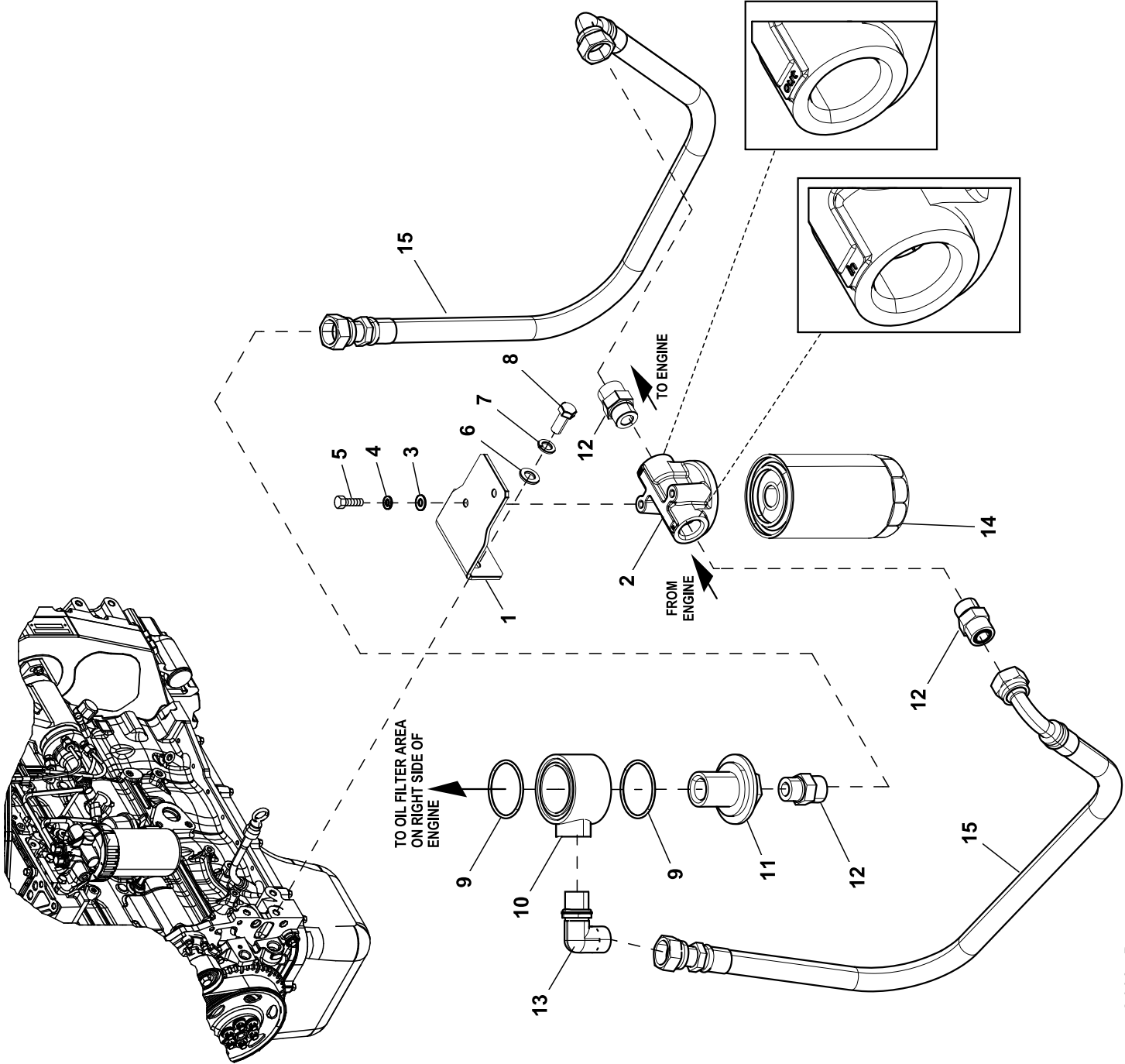
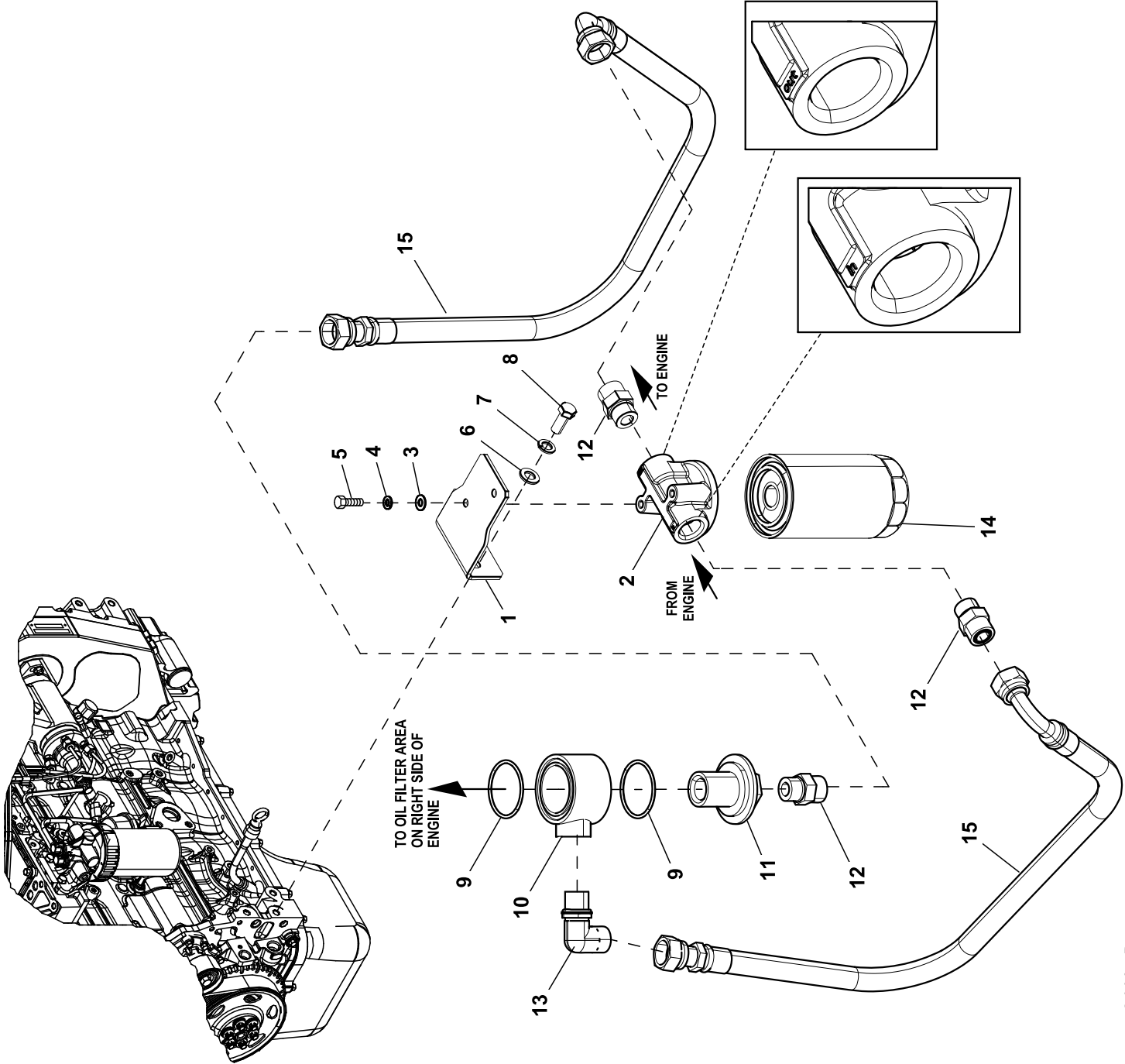


GROUP H



GROUP H



EXPLODED VIEW: EV 4.5L G17 REMOTE OIL FILTER Y02**DRAWING #: 0J3319F****GROUP H****APPLICABLE TO: Y02 SINGLE SIDE UNITS**

ITEM	PART#	QTY.	DESCRIPTION
(1)1	0J3330CST0R	1	BRKT MTG RMT OIL FLTR 4.5 Y02
2	0J3324	1	SUPPORT ASSY REMOTE OIL FILTER
3	022145	2	WASHER FLAT 5/16-M8 ZINC
4	022129	2	WASHER LOCK M8-5/16
5	039253	2	SCREW HHC M8-1.25 X 20 C8.8
6	049808	2	WASHER FLAT M12
7	051769	2	WASHER LOCK M12
8	059920	2	SCREW HHC M12-1.75 X 35 C10.9
9	0J3322	2	O-RING 59.92MM X 3.53MM
10	0J3321	1	SUPPORT RMT OIL FILTER 4.5 G17
11	0J3323	1	UNION REMOTE OIL FILTER 4.5 G17
12	0J3326	3	UNION THEADED RMT OIL FILTER
13	0J3327	1	ELBOW COUPLING
14	0H48930301	1(REF)	CARTRIDGE, OIL FILTER
15	0J3325	2	HOSE REMOTE OIL FILTER 4.5 G17
16	085662D	1	TIE WRAP UL 17.7 X .35 BLK HT

NOTES (UNLESS OTHERWISE SPECIFIED):

(1) SHEET METAL PARTS LISTED IN THE BOM TABLE ARE REPRESENTING GENERIC PARTS (NO COLOR)

- MANUFACTURING: FOR CORRECT MATERIAL AND COLOR REFER TO AS400 BOM.
- CUSTOMER: WHEN ORDERING REPLACEMENT PARTS ENTER BASE NUMBER (FIRST 6 DIGITS ONLY) IN THE SYSTEM FOR CORRECT MATERIAL AND COLOR (FOR REFERENCE SEE GUIDELINE 0H7169).

EXPLODED VIEW: EV 4.5L G17 REMOTE OIL FILTER Y02**DRAWING #: 0J3319F****GROUP H****APPLICABLE TO: Y02 SINGLE SIDE UNITS**

ITEM	PART#	QTY.	DESCRIPTION
(1)1	0J3330CST0R	1	BRKT MTG RMT OIL FLTR 4.5 Y02
2	0J3324	1	SUPPORT ASSY REMOTE OIL FILTER
3	022145	2	WASHER FLAT 5/16-M8 ZINC
4	022129	2	WASHER LOCK M8-5/16
5	039253	2	SCREW HHC M8-1.25 X 20 C8.8
6	049808	2	WASHER FLAT M12
7	051769	2	WASHER LOCK M12
8	059920	2	SCREW HHC M12-1.75 X 35 C10.9
9	0J3322	2	O-RING 59.92MM X 3.53MM
10	0J3321	1	SUPPORT RMT OIL FILTER 4.5 G17
11	0J3323	1	UNION REMOTE OIL FILTER 4.5 G17
12	0J3326	3	UNION THEADED RMT OIL FILTER
13	0J3327	1	ELBOW COUPLING
14	0H48930301	1(REF)	CARTRIDGE, OIL FILTER
15	0J3325	2	HOSE REMOTE OIL FILTER 4.5 G17
16	085662D	1	TIE WRAP UL 17.7 X .35 BLK HT

NOTES (UNLESS OTHERWISE SPECIFIED):

(1) SHEET METAL PARTS LISTED IN THE BOM TABLE ARE REPRESENTING GENERIC PARTS (NO COLOR)

- MANUFACTURING: FOR CORRECT MATERIAL AND COLOR REFER TO AS400 BOM.
- CUSTOMER: WHEN ORDERING REPLACEMENT PARTS ENTER BASE NUMBER (FIRST 6 DIGITS ONLY) IN THE SYSTEM FOR CORRECT MATERIAL AND COLOR (FOR REFERENCE SEE GUIDELINE 0H7169).