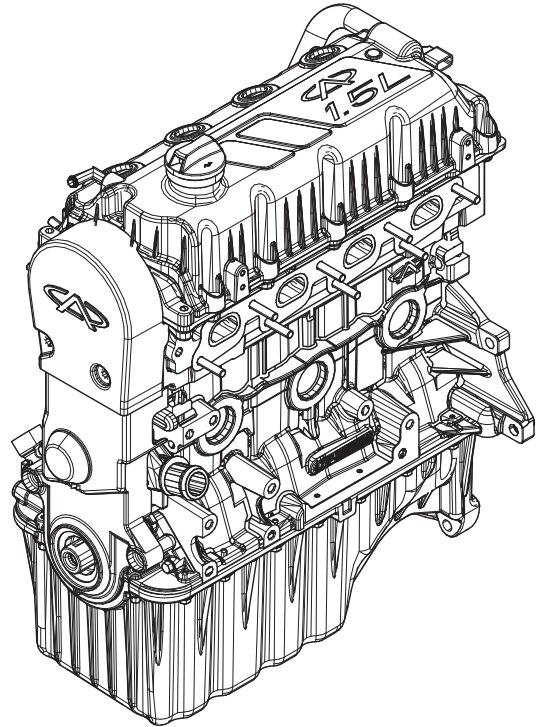


0J1556PMNL

GENERAC®



1.5 LITER
G A S

(G11)

ENGINE
PARTS
MANUAL

FOR ENGINES USED IN UNITS BEGINNING
WITH SERIAL NUMBER 6895076

1.5L GAS ENGINE TABLE OF CONTENTS

QUICK REFERENCE GUIDE.....	1
CYLINDER BLOCK	2
CYLINDER HEAD ASSEMBLY.....	4
LUBRICATION SYSTEM	6
COOLANT SYSTEM.....	8
CRANKSHAFT ASSEMBLY	10
VALVE TRAIN ASSEMBLY	12
TIMING SYSTEM.....	14
BLOW BY SYSTEM ASSY.....	15

LEGEND

“A/R” AS REQUIRED
“STD” STANDARD SIZE
“O.S.” OVERSIZE
“U.S.” UNDERSIZE
“NA” NOT AVAILABLE

NOTICE!

The information in this manual is known to be accurate as of the date of release shown on the cover. However, engineering changes can occur without notice. To obtain the proper parts, please be sure to use the serial number of the unit being serviced when ordering from this manual. Always refer to any part notes and changes before ordering. All other parts not shown in this manual can be found on Generac's exploded view drawings online on GENservice at www.generac.com.

1.5L GAS ENGINE QUICK REFERENCE GUIDE

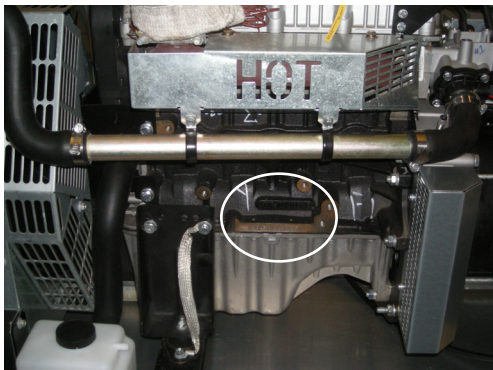
<i>ENGINE SIZE</i>	1.5 Liter
<i>FUEL</i>	LP/NG
<i>MAKE</i>	Generac (G11)
<i>ENGINE P/N</i>	0J1556

QUICK REFERENCE ENGINE PARTS

<i>Description</i>	<i>Part Number</i>	<i>Special Notes</i>
Scheduled Maintenance Kit	0J155600SM	Oil Filter/ Air Cleaner Element/ Spark Plugs
Oil Filter	0E7080	Oil capacity - See owner's manual
Air Cleaner Element	059402	
V-Belt	0G0823	
Thermostat	0J15560205	Coolant Capacity - see owner's manual
Starter Motor	0G7461	
Spark Plug	0J15560235	Spark plug gap- See owner's manual
Spark Plug Wire Set	0J4472	
Block Heater Kit	0J1556BLKHTR	

ENGINE IDENTIFICATION

THE ENGINE IDENTIFICATION TAG CAN BE LOCATED ON THE LEFT SIDE OF THE ENGINE BLOCK FACING THE FLYWHEEL END OF THE GENERATOR



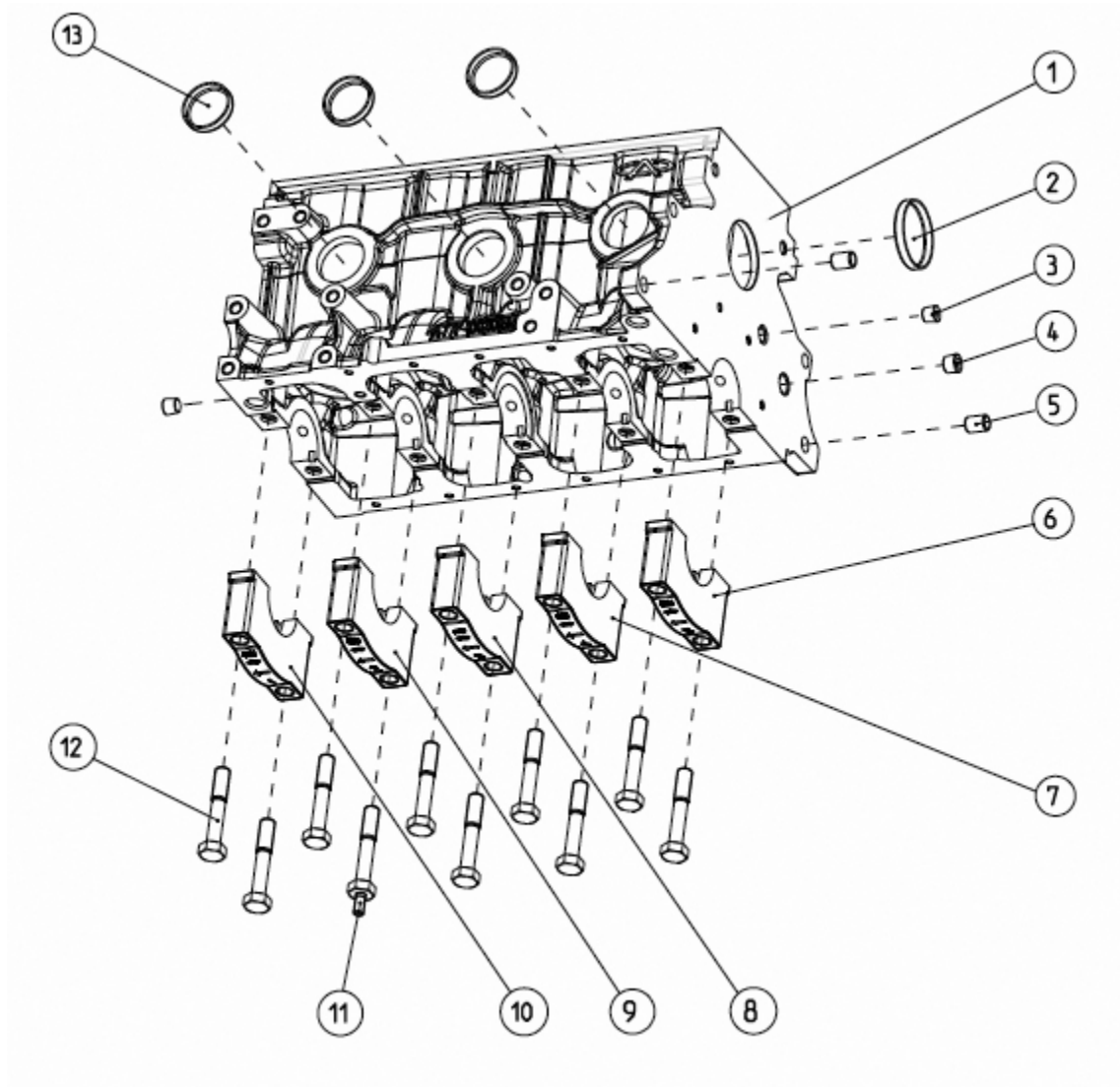
LEFT SIDE OF ENGINE BLOCK



SECONDARY ENGINE PART NUMBER

1.5L GAS ENGINE CYLINDER BLOCK

Note: The right and left banks of engine are determined by viewing the engine from the flywheel side.



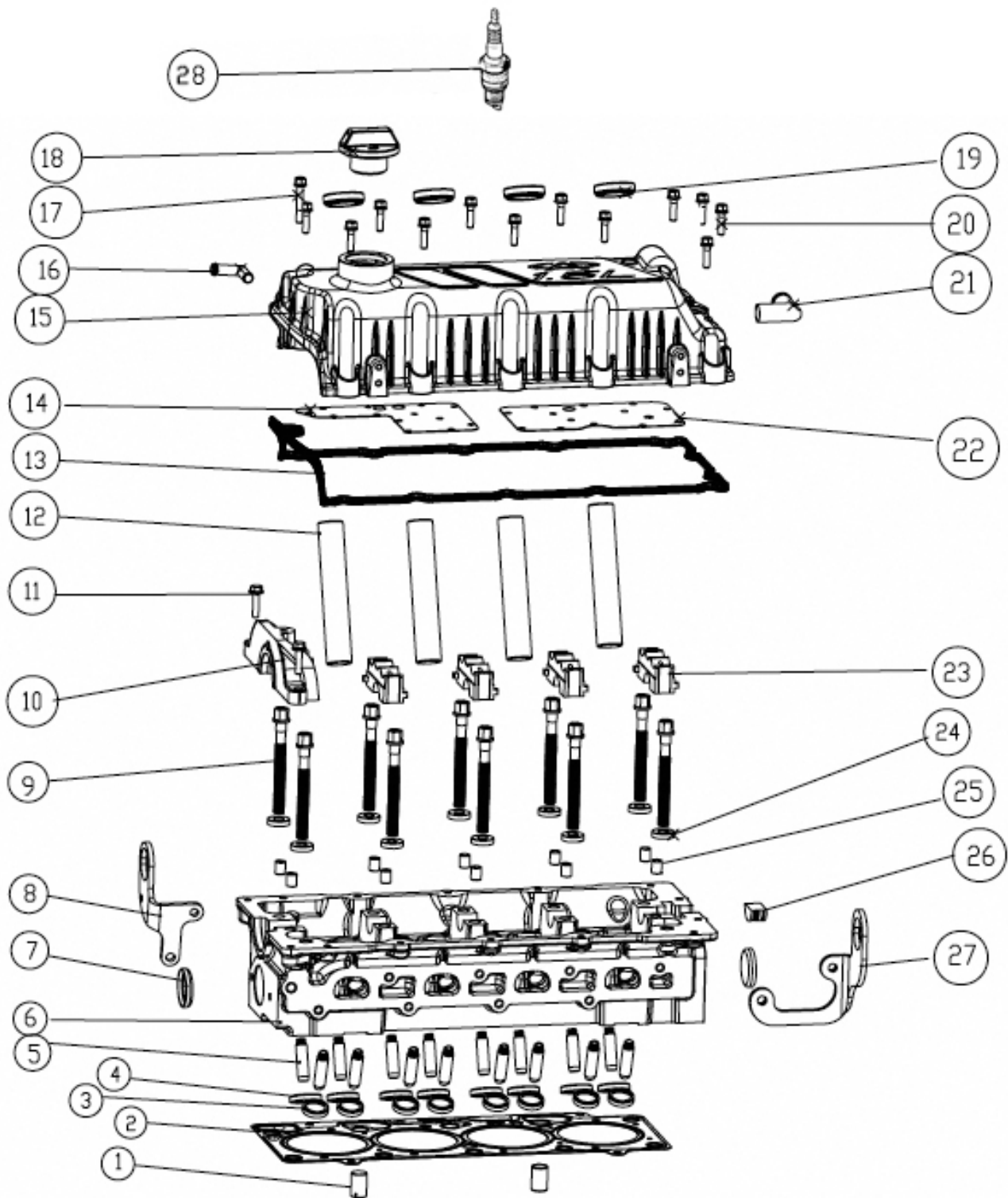
1.5L GAS ENGINE CYLINDER BLOCK

ITEM	PART NO.	DESCRIPTION	QTY
1	OJ15560118	BLOCK, CYLINDER	1
2	OJ15560172	PLUG, FREEZE	1
3	OG02070129	PLUG, SCREW	2
4	OJ15560189	PLUG, SCREW	1
5	OJ15560173	BUSHING	2
6	OJ15560195	CAP, MAIN BEARING	1
7	OJ15560194	CAP, MAIN BEARING	1
8	OJ15560193	CAP, MAIN BEARING	1
9	OJ15560192	CAP, MAIN BEARING	1
10	OJ15560191	CAP, MAIN BEARING	1
11	OG02070142	STUD, THREADED, MAIN BEARING	1
12	OG02070141	BOLT, MAIN BEARING	9
13	OG02070250	PLUG, FREEZE	3

Note: The right and left banks of engine are determined by viewing the engine from the flywheel side.

1.5L GAS ENGINE CYLINDER HEAD ASSEMBLY

Note: The right and left banks of engine are determined by viewing the engine from the flywheel side.



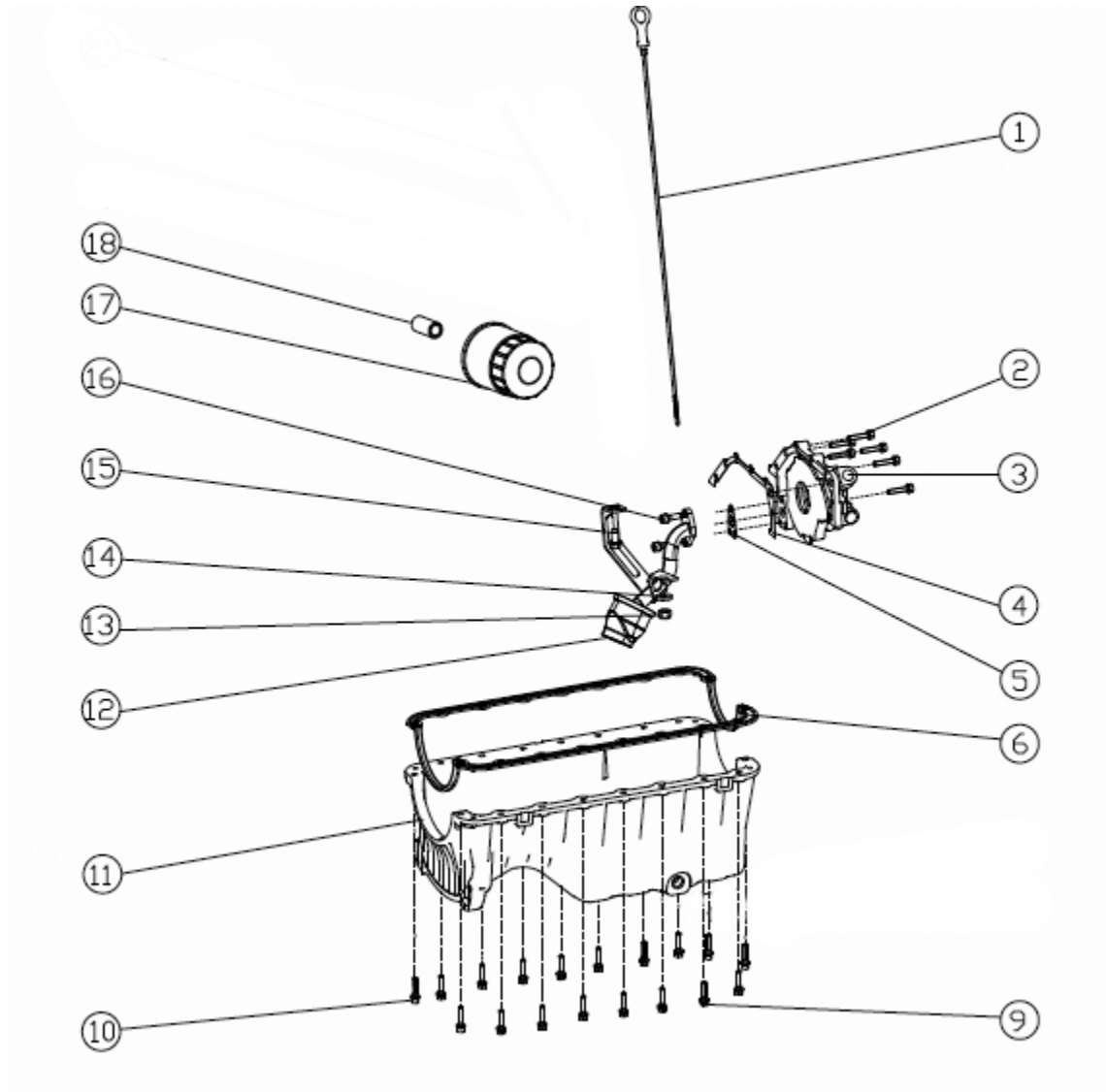
1.5L GAS ENGINE CYLINDER HEAD ASSEMBLY

ITEM	PART NO.	DESCRIPTION	QTY
1	OJ15560138	PIN, DOWEL, CYLINDER HEAD	2
2	OJ15560137	GASKET, CYLINDER HEAD	1
3	OJ15560121	VALVE SEAT, EXHAUST	8
4	OJ15560120	VALVE SEAT, INTAKE	8
5	OJ15560122	GUIDE, VALVE	16
6	OJ15560119	HEAD, CYLINDER	1
7	OJ15560174	PLUG, FREEZE	2
8	OJ15560139	LIFT, ENGINE, FRONT	1
9	OJ15560131	BOLT, CYLINDER HEAD	10
10	OJ15560132	BEARING CAP, 1ST CAMSHAFT	1
11	OJ15560177	BOLT	2
12	OJ15560135	SLEEVE, SPARK PLUG	4
13	OJ15560129	GASKET, VALVE COVER	1
14	OJ15560128	BAFFLE #2	1
15	OJ15560124	COVER, VALVE	1
16	OJ15560126	SYPHON	1
17	OJ15560223	VALVE COVER BOLT # 1	1
18	OJ15560130	FILL CAP ASSY.	1
19	OJ15560111	GASKET, SPARK PLUG SLEEVE	4
20	OJ15560222	VALVE COVER BOLT # 2	12
21	OJ15560125	SYPHON, RIGHT ANGLE	1
22	OJ15560127	BAFFLE #1	1
23	OJ15560133	BEARING CAP, NO.2 THROUGH 5.	4
24	OG02070170	GASKET, CYLINDER HEAD BOLT	10
25	OJ15560134	BOLT, LOCATING, CAM BEARING CAP	10
26	OJ15560123	KEY, WOODRUFF	1
27	OJ15560140	LIFT, ENGINE, BACK	1
28	OJ15560235	SPARK PLUG	4

Note: The right and left banks of engine are determined by viewing the engine from the flywheel side.

1.5L GAS ENGINE LUBRICATION SYSTEM

Note: The right and left banks of engine are determined by viewing the engine from the flywheel side.



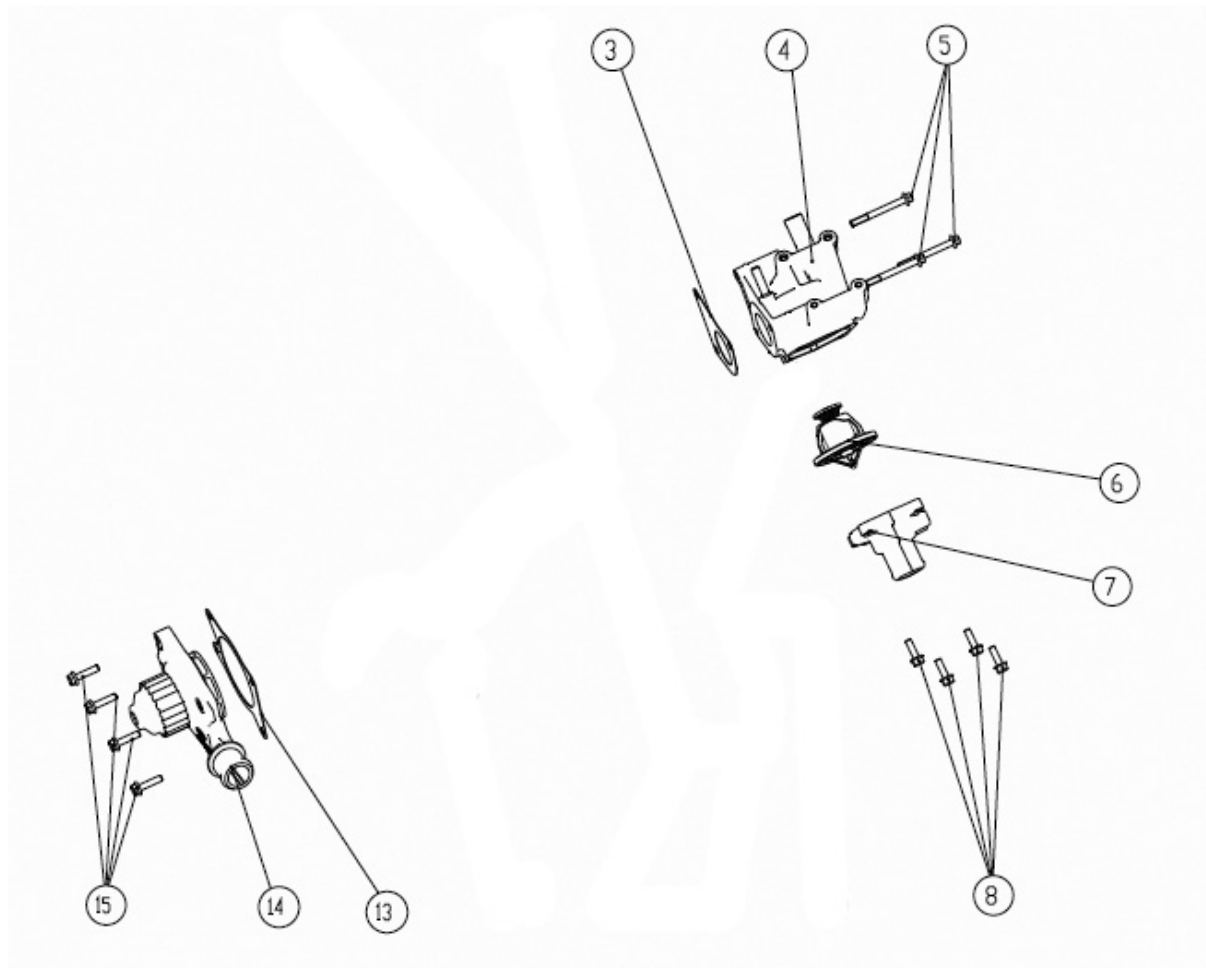
1.5L GAS ENGINE LUBRICATION SYSTEM

ITEM	PART NO.	DESCRIPTION	QTY
1	OG02070126	DIPSTICK, OIL	1
2	OG02070124	BOLT, HEXAGON	6
3	OJ15560171	PUMP, OIL	1
4	OG02070122	GASKET SEAL, OIL PUMP	1
5	OG02070119	GASKET, FLANGE	1
6	OJ15560165	GASKET SEAL, OIL PAN	1
9	OJ15560220	BOLT ASSY., HEXAGON	14
10	OJ15560221	BOLT ASSY., HEXAGON	4
11	OJ15560164	OIL PAN ASSY.	1
12	OG02070137	STRAINER, OIL	1
13	OG02070136	HEX NUT, LOCK	1
14	OJ15560183	WASHER, PLAIN	1
15	OG02070135	BOLT, HEXAGON	1
16	OG02070118	BOLT, SPRING WASHER	2
17	OG02070100	FILTER, OIL (USE 0E7080)	1
18	OG02070127	JOINT, OIL FILTER	1
20	OJ15560185	TUBE, DIPSTICK	1

Note: The right and left banks of engine are determined by viewing the engine from the flywheel side.

1.5L GAS ENGINE COOLANT SYSTEM

Note: The right and left banks of engine are determined by viewing the engine from the flywheel side.



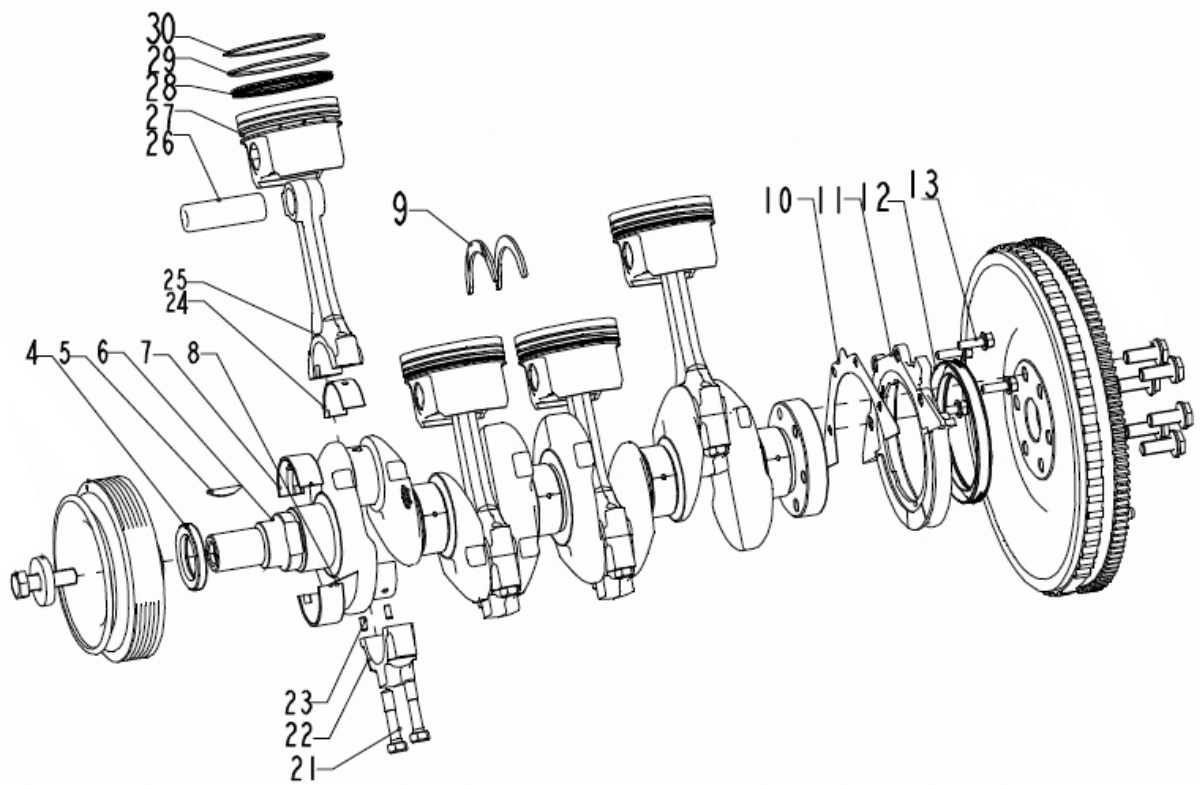
1.5L GAS ENGINE COOLANT SYSTEM

ITEM	PART NO.	DESCRIPTION	QTY
3	OJ15560114	SPACER, T-STAT HOUSING	1
4	OJ15560167	HOUSING, THERMOSTAT	1
5	OJ15560110	BOLT	3
6	OJ15560205	THERMOSTAT	1
7	OJ15560206	COVER, T-STAT HOUSING	1
8	OG02070131	BOLT	4
13	OJ15560169	SPACER, WATER PUMP	1
14	OJ15560168	PUMP, WATER	1
15	OG02070201	BOLT	4

Note: The right and left banks of engine are determined by viewing the engine from the flywheel side.

1.5L GAS ENGINE CRANKSHAFT ASSEMBLY

Note: The right and left banks of engine are determined by viewing the engine from the flywheel side.



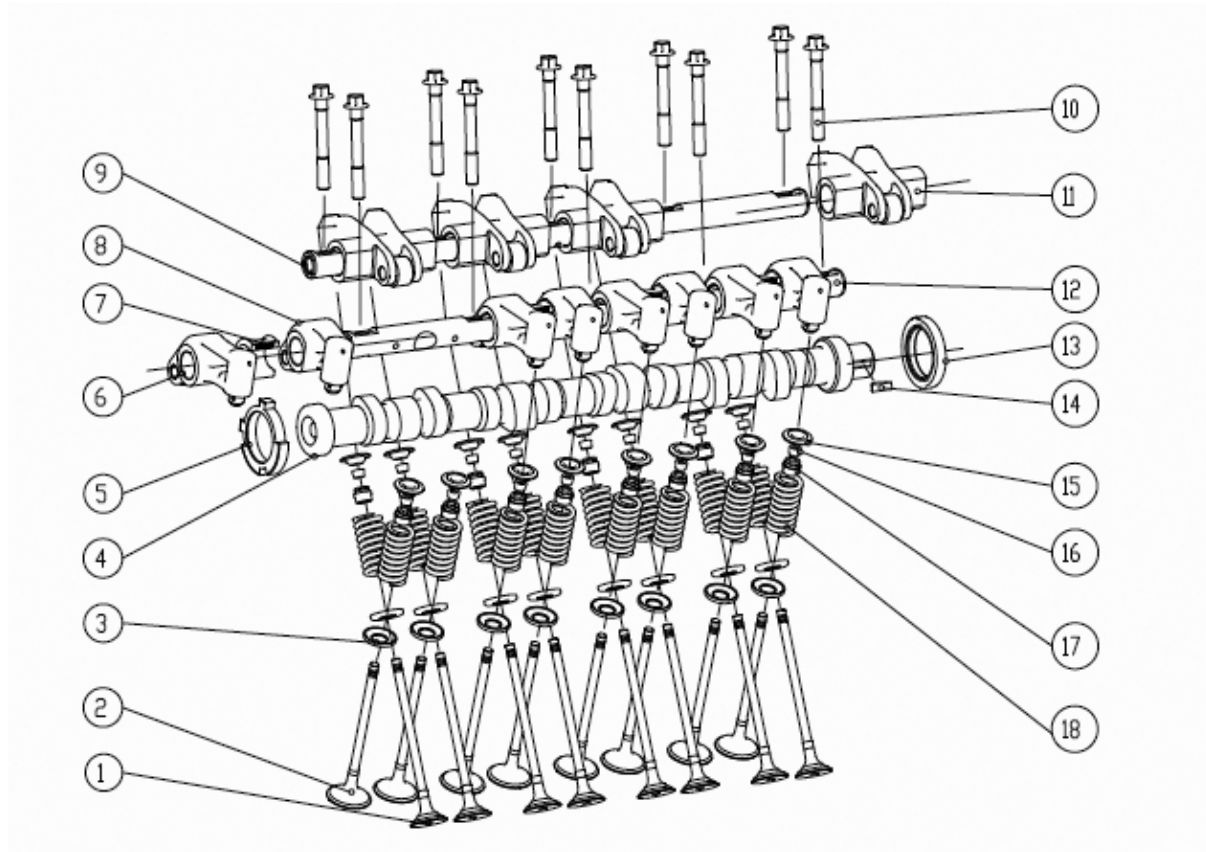
1.5L GAS ENGINE CRANKSHAFT ASSEMBLY

ITEM	PART NO.	DESCRIPTION	QTY
4	OG02070121	OILSEAL, FRONT, CRANKSHAFT	1
5	OG02070120	KEY, WOODRUFF	1
6	OJ15560146	CRANKSHAFT	1
7	OJ15560197	BEARING, TOP, JOURNAL	5
8	OJ15560198	BEARING, BOTTOM, JOURNAL	5
9	OJ15560199	PLATE, THRUST	2
10	OG02070130	GASKET, REAR BRACKET	1
11	OG02070133	OIL SEAL, REAR BRACKET	1
12	OG02070132	OIL SEAL, REAR CRANKSHAFT	1
13	OG02070131	BOLT, HEX-HEAD FLANGE	4
21	OJ15560230	BOLT, CONNECTING ROD	8
22	OJ15560115	CAP, CONNECTING ROD	4
23	OJ15560176	PIN, LOCATING	8
24	OJ15560196	BEARINGS, CONNECTING RODS	8
25	OJ15560117	CONNECTING ROD	4
26	OJ15560116	PIN, PISTON	4
27	OJ15560142	PISTON	4
28	OJ15560145	OIL RING, PISTON	4
29	OJ15560144	FIRST RING, PISTON	4
30	OJ15560143	SECOND RING, PISTON	4

Note: The right and left banks of engine are determined by viewing the engine from the flywheel side.

1.5L GAS ENGINE VALVE TRAIN ASSEMBLY

Note: The right and left banks of engine are determined by viewing the engine from the flywheel side.



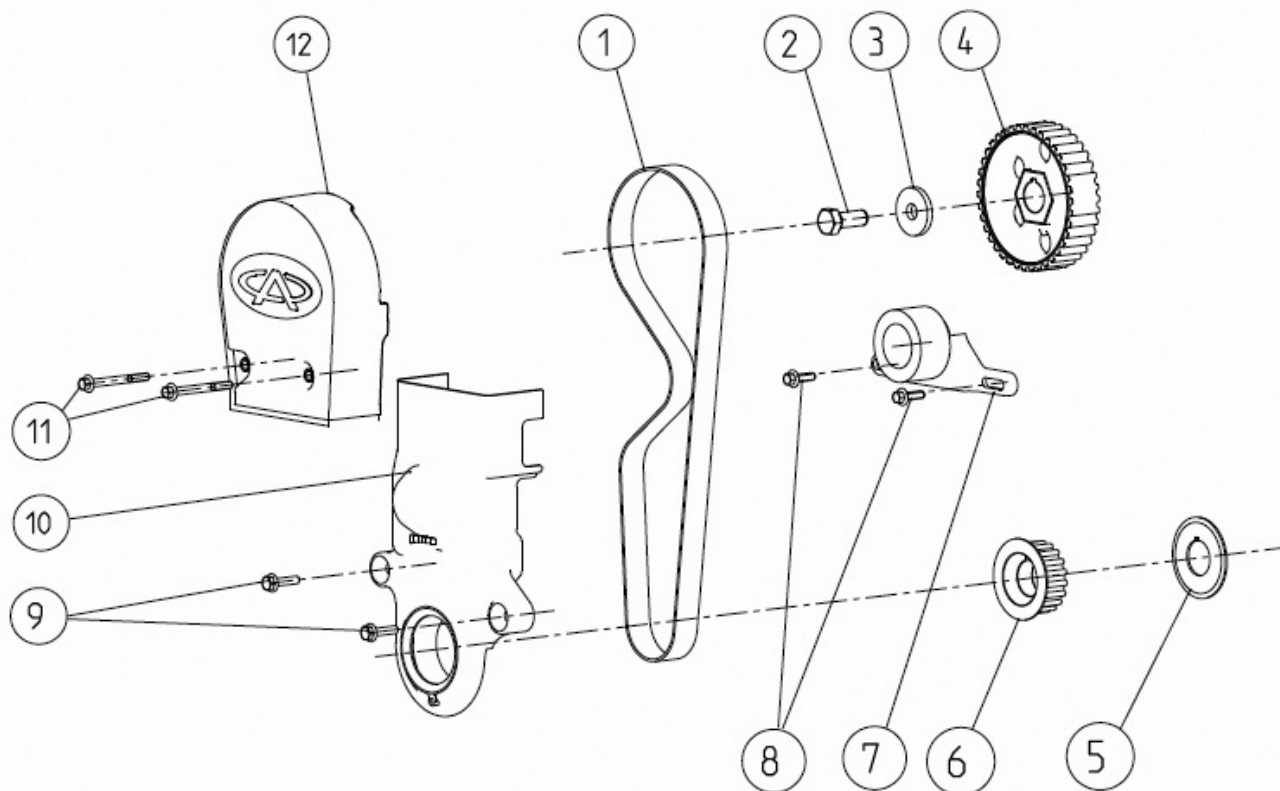
1.5L GAS ENGINE VALVE TRAIN ASSEMBLY

ITEM	PART NO.	DESCRIPTION	QTY
1	OJ15560151	VALVE, EXHAUST	8
2	OJ15560150	VALVE, INTAKE	8
3	OJ15560152	BOTTOM, VALVE-SPRING RETAINER	16
4	OJ15560148	CAMSHAFT	1
5	OJ15560149	WHEEL, TRIGGER	1
6	OJ15560153	RIGHT ROCKER ARM-INTAKE COMBINATION	4
7	OJ15560136	BLOCK, ROCKER ARM INTAKE	4
8	OJ15560154	LEFT ROCKER ARM-INTAKE COMBINATION	4
9	OJ15560157	ROCKER SHAFT-EXHAUST COMBINATION	1
10	OJ15560141	CAP, ROCKER SHAFT	10
11	OJ15560157	ROCKER SHAFT-EXHAUST COMBINATION	1
12	OJ15560155	ROCKER SHAFT-INTAKE COMBINATION	1
13	OJ15560112	CAMSHAFT-STEM SEALING	1
14	OG02070182	KEY,WOODRUFF	1
15	OJ15560113	RETAINER, VALVE SPRING, TOP	16
16	OJ15560203	LOCK, VALVE	32
17	OJ15560204	SEALING, VALVE-STEM	16
18	OJ15560202	SPRING, VALVE	16

Note: The right and left banks of engine are determined by viewing the engine from the flywheel side.

1.5L GAS ENGINE TIMING SYSTEM

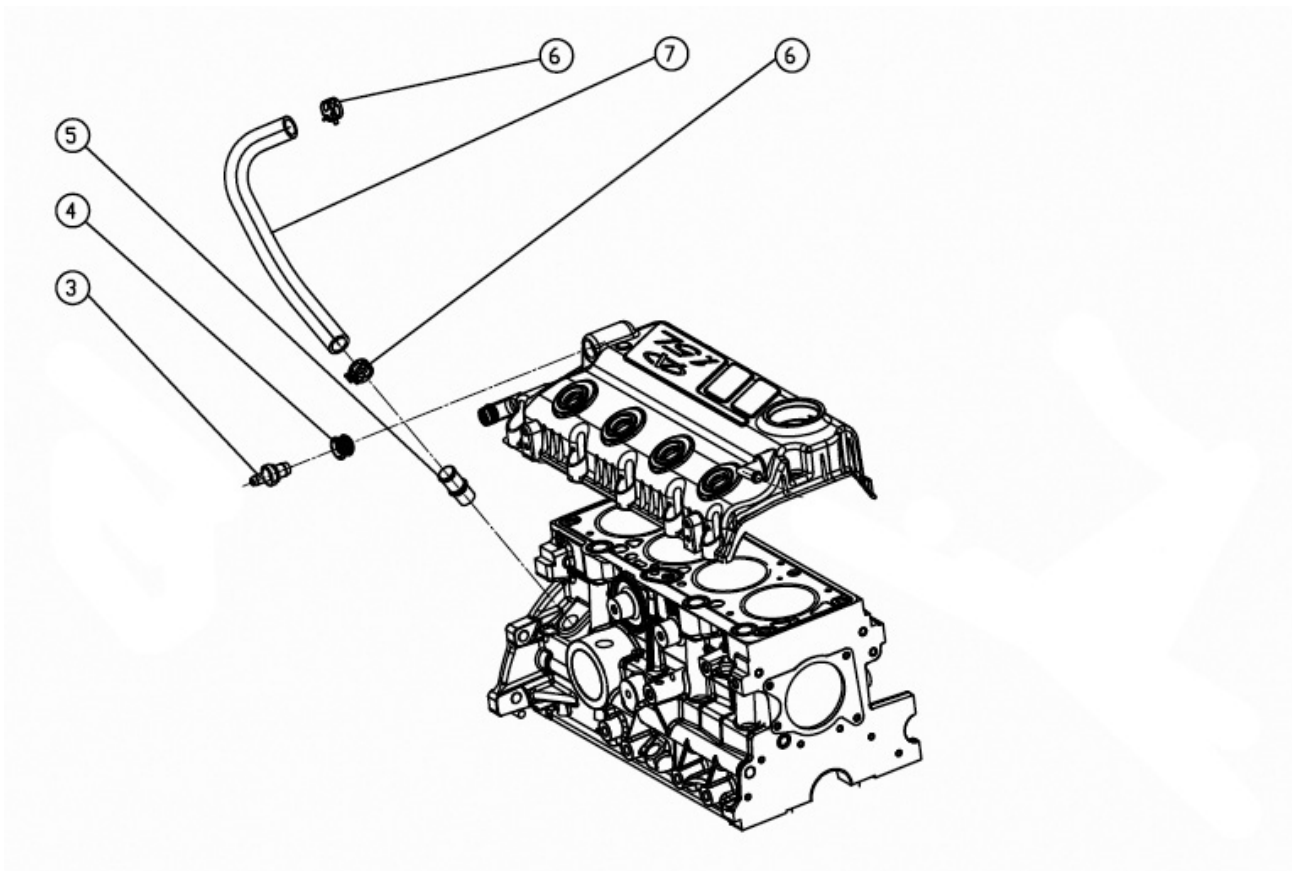
Note: The right and left banks of engine are determined by viewing the engine from the flywheel side.



ITEM	PART NO.	DESCRIPTION	QTY
1	OJ15560156	BELT, TIMING	1
2	OG02070212	BOLT	1
3	OG02070211	WASHER, CAMSHAFT SPROCKET	1
4	OJ15560184	SPROCKET, CAMSHAFT	1
5	OG02070204	WASHER, CAMSHAFT SPROCKET	1
6	OG02070205	CRANKSHAFT, SPROCKET	1
7	OG02070209	TENSION ASSY., PULLEY	1
8	OJ15560178	BOLT	2
9	OG02070201	BOLT	2
10	OJ15560159	COVER ASSY, BOTTOM TIMING	1
11	OG02070197	BOLT	2
12	OJ15560158	COVER ASSY, TOP COVER	1

1.5L GAS ENGINE BLOW BY SYSTEM ASSY.

Note: The right and left banks of engine are determined by viewing the engine from the flywheel side.



ITEM	PART NO.	DESCRIPTION	QTY
3	0J15560227	VALVE, PCV	1
4	0J15560228	COVER, PCV VALVE	1
5	0J15560229	HOSE, BLOW BY	1
6	0J15560217	CLAMP	2
7	0J15560231	HOSE, BLOW BY	1

Note: The right and left banks of engine are determined by viewing the engine from the flywheel side.

NOTES

