



*GP2200i Gasoline
Portable Inverter Generator
Parts Manual*

 **WARNING**

CANCER AND REPRODUCTIVE HARM

www.P65Warnings.ca.gov

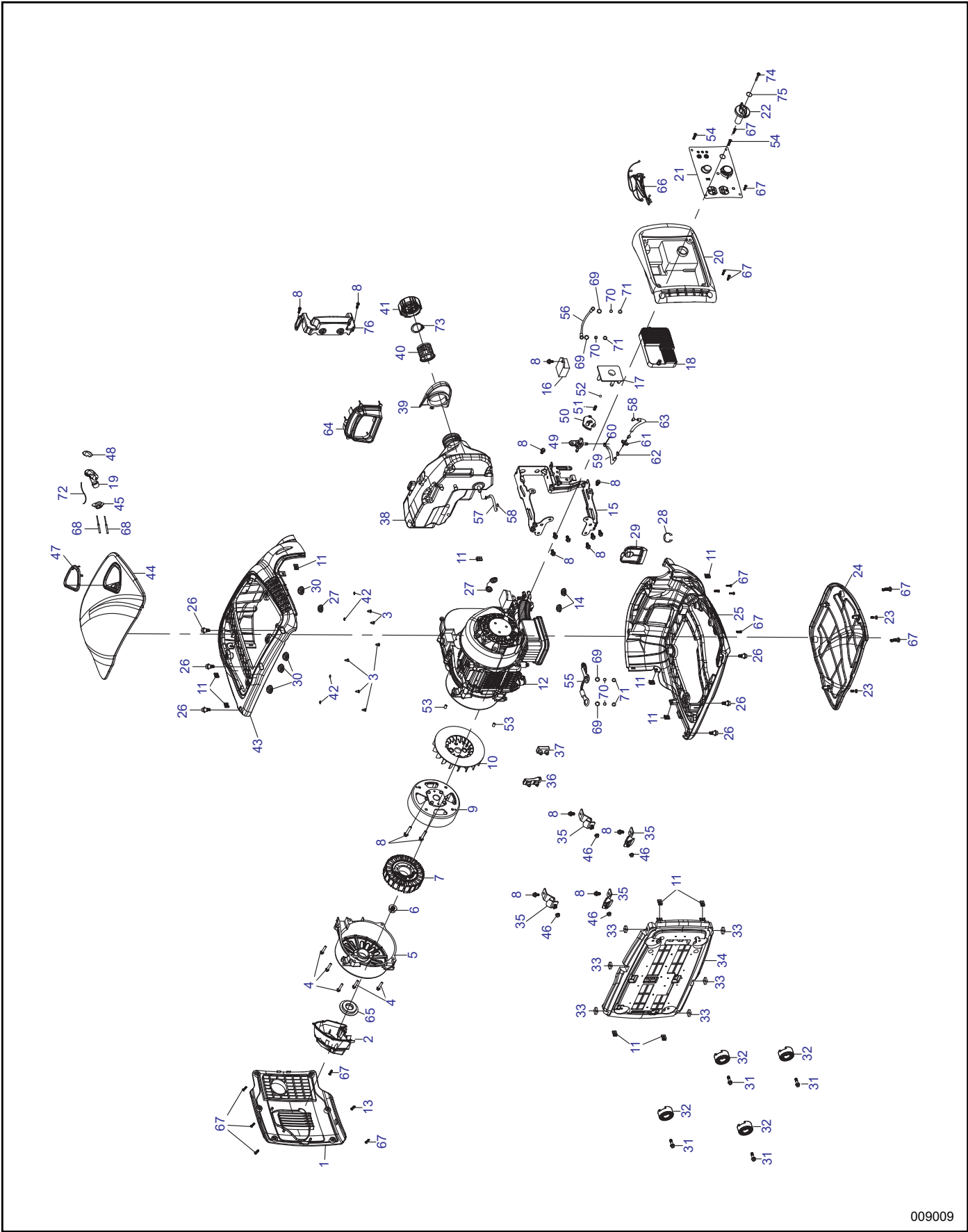
(000393a)

The information in this manual is known to be accurate as of the date of release shown on the cover. However, engineering changes can occur without notice. To obtain the proper parts, be sure to use the serial number of the unit being serviced when ordering from this manual. Always refer to any part notes and changes before ordering. All other parts not shown in the manual can be found on Generac's exploded view drawings at www.generac.com or by contacting your local authorized dealer.

www.generac.com

1-888-GENERAC

(1-888-436-3722)



009009

Item	Part No.	Description	Qty.
1	10000006908	MUFFLER BAFFLE	1
2	10000006861	MUFFLER SHIELD 1	1
3	10000031293	CROSS RECESSED PAN HEAD SCREW ST4.2X13	6
4	10000006914	BOLT(M6X30MM)	5
5	10000006913	ALTERNATOR END COVER	1
6	10000007353	NUT (M12X1.25MM)	1
7	10000006835	STATOR	1
8	10000007327	BOLT(M6X12MM)	17
9	10000006893	ROTOR ASSEMBLY	1
10	10000006904	ENGINE FAN	1
11	10000006942	LOCK CLAMP (M5)	10
12	0L1681	ENGINE ASSEMBLY	1
13	10000038583	TROUGH PAN HEAD SCREW	1
14	10000006934	VIBRATION ISOLATION PAD C	2
15	10000007354	INVERTER STENT	1
16	10000006866	DC VOLTAGE STABILIZER	1
17	10000006933	OIL SWITCH BRACKET	1
18	10000006906	INVERTER	1
19	10000006939	PULL HANDLE	1
20	10000006957	CONTROL PANEL BACK COVER	1
21	10000012914	PANEL COMPLETE	1
22	10000012905	FUEL SHUT-OFF KNOB	1
23	10000006951	STOP BOLT (M5X18MM)	2
24	10000012930	LEFT PANEL	1
25	10000012779	LEFT FRAME	1
26	10000006899	HEX HEAD FLANGE BOLT(M6X20MM)	6
27	10000038603	VIBRATION ISOLATOR PAD B	3
28	10000006964	C-CLIP	1
29	10000012921	COVER	1
30	10000038642	VIBRATION ISOLATION PAD A	4
31	10000004488	BOLT (M6X20MM)FUEL LINE	4
32	10000006838	CHASIS RUBBER PAD SUSPENSION	4
33	10000006941	SQUARE NUT (M6)	6
34	10000006893	BASE PLATE	1
35	10000006931	DAMPING BRACKET	4
36	10000006924	MOTOR VIBRATION DAMPING PAD	1

Item	Part No.	Description	Qty.
37	10000006930	ENGINE VIBRATION DAMPING PAD	1
38	10000006935	FUEL TANK ASSEMBLY	1
39	10000006907	FUEL FILLER PORT COVER	1
40	10000006896	FUEL FILTERSCREEN	1
41	10000006936	FUEL CAP	1
42	10000038585	FLAT WASHER	4
43	10000012897	RIGHT FRAME	1
44	10000012898	RIGHT PANEL	1
45	10000012913	ROPE GUIDE PLATE	1
46	10000006932	NUT (M6)	4
47	10000012904	PULL HANDLE OPENING TRIM	1
48	10000012899	PULL HANDLE COVER	1
49	10000038617	FUEL VALVE ASSEMBLY	1
50	10000038652	FUEL VALVE LEVER	1
51	10000038605	FUEL VALVE LEVER SPRING	1
52	10000038654	FUEL VALVE LEVER BALL	1
53	10000006807	CASE COVER DOWEL PIN	2
54	10000038655	PAN HEAD SCREW WITH WASHER	2
55	10000006962	GROUNDING WIRE	1
56	10000006970	GROUND WIRE	1
57	10000006867	FUEL HOSE	1
58	10000006938	FUEL LINE CLIP	3
59	10000006897	FUEL HOSE	1
60	10000006898	FUEL LINE CLIP	1
61	10000004534	FUEL FILTER	1
62	10000038636	FUEL LINE CLIP	2
63	10000038656	FUEL LINE	1
64	10000038586	MUFFLER COVER RUBBER SEAL	1
65	10000006836	INLET COVER	1
66	10000006956	WIRING HARNESS	1
67	10000031560	BOLT (M5X12)	15
68	10000038657	BLIND RIVET	2
69	10000006954	STAR WASHER	4
70	10000004606	SPLIT LOCK WASHER	4
71	10000004544	FLAT WASHER	4
72	10000038626	CHOKE CABLE	1
73	10000038659	FUEL FILL O-RING	1
74	10000038589	SCREW	1
75	10000038637	FUEL KNOB O-RING	1

Item	Part No.	Description	Qty.
76	1000006894	ENGINE SHROUD	1
N/S	0J8331	SPARK PLUG WRENCH	1
N/S	10000017000	BATTERY CHARGE CABLE	1
N/S	10000030984	OIL FUNNEL	1
N/S	10000030981	SCREWDRIVER	1

NOTE: To order replacement engine parts, see manual 1000004822.

NOTE: The last four items marked N/S are not shown.

Part No. 10000011556 Rev. C 11/14/2018
 ©2018 Generac Power Systems, Inc.
 All rights reserved
 Specifications are subject to change without notice.
 No reproduction allowed in any form without prior written
 consent from Generac Power Systems, Inc.



Generac Power Systems, Inc.
 S45 W29290 Hwy. 59
 Waukesha, WI 53189
 1-888-GENERAC (1-888-436-3722)
www.generac.com