

WEIGHT DATA				
ENGINE/KW	ENCLOSURE MATERIAL	WEIGHT GENSET ONLY KG [LBS]	WEIGHT SHIPPING SKID KG [LBS]	SHIPPING WEIGHT KG [LBS]
4.5L/48KW	AL	808 [1781]	51 [112]	859 [1893]

SERVICE ITEM	4.5L
OIL FILL CAP	LEFT SIDE
OIL DIP STICK	LEFT SIDE
OIL FILTER	LEFT SIDE
OIL DRAIN HOSE	RIGHT SIDE
RADIATOR DRAIN HOSE	RIGHT SIDE
COOLANT RECOVERY BOTTLE	RIGHT SIDE
RADIATOR FILL CAP	ROOF TOP
AIR CLEANER ELEMENT	LEFT SIDE
SPARK PLUGS	LEFT SIDE
MUFFLER	SEE NOTE 11
DRIVE BELT	EITHER SIDE
BATTERY	LEFT SIDE

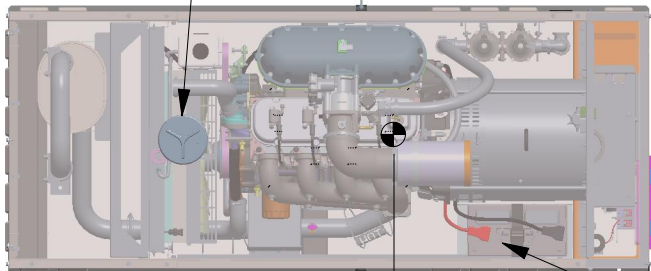
NOTES:

1. MINIMUM RECOMMENDED CONCRETE PAD SIZE IS 6" OFFSET OF OVERALL LENGTH AND WIDTH OF GENERATOR. {1193.8 (47") WIDE X 2423.2 (95.4") LONG}. REFERENCE INSTALLATION GUIDE SUPPLIED WITH THE UNIT FOR CONCRETE PAD GUIDELINES. REFERENCE MANUFACTURER'S SPECIFICATIONS IF USING ENGINEERED, PREFABRICATED SLABS.
2. ALLOW SUFFICIENT ROOM ON ALL SIDES OF THE GENERATOR FOR MAINTENANCE AND SERVICING. THIS UNIT MUST BE INSTALLED IN ACCORDANCE WITH CURRENT APPLICABLE NFPA 37 AND NFPA 70 STANDARDS AS WELL AS ANY OTHER FEDERAL, STATE, AND LOCAL CODES.
3. CONTROL PANEL / CIRCUIT BREAKER INFORMATION:
 - SEE SPECIFICATION SHEET OR OWNERS MANUAL
 - ACCESSIBLE THROUGH CUSTOMER ACCESS ASSEMBLY DOOR ON REAR OF GENERATOR.
4. REMOVE THE REAR ENCLOSURE COVER PANEL TO ACCESS THE STUB-UP AREAS AS FOLLOWS:
 - HIGH VOLTAGE CONNECTION INCLUDING AC LOAD LEAD CONDUIT CONNECTION NEUTRAL CONNECTION, BATTERY CHARGER 120 VOLT AC (0.5 AMP MAX) CONNECTION.
 - LOW VOLTAGE CONNECTION INCLUDING TRANSFER SWITCH CONTROL WIRES.
5. CENTER OF GRAVITY AND WEIGHT MAY CHANGE DUE TO UNIT OPTIONS.
6. BOTTOM OF GENERATOR SET MUST BE ENCLOSED TO PREVENT PEST INTRUSION AND RECIRCULATION OF DISCHARGE AIR AND/OR IMPROPER COOLING AIR FLOW.
7. REFERENCE OWNERS MANUAL FOR LIFTING WARNINGS.
8. MOUNTING BOLTS OR STUDS TO MOUNTING SURFACE SHALL BE 5/8-11 GRADE 5 (USE STANDARD SAE TORQUE SPECS)
9. MUST ALLOW FREE FLOW OF INTAKE AIR, DISCHARGE AIR AND EXHAUST. SEE SPEC SHEET FOR MINIMUM AIR FLOW AND MAXIMUM RESTRICTION REQUIREMENTS.
10. GENERATOR MUST BE INSTALLED SUCH THAT FRESH COOLING AIR IS AVAILABLE AND THAT DISCHARGE AIR FROM RADIATOR IS NOT RECIRCULATED.
11. EXHAUST MUFFLER ENCLOSED WITHIN GENERATOR ENCLOSURE, REMOVE FRONT PANEL TO ACCESS.

RADIATOR/EXHAUST
DISCHARGE AIR
(BOTH SIDES)

AIR INTAKE
(BOTH SIDES)

REMOVE COVER
FOR ACCESS TO
RADIATOR FILL
CAP



TOP VIEW

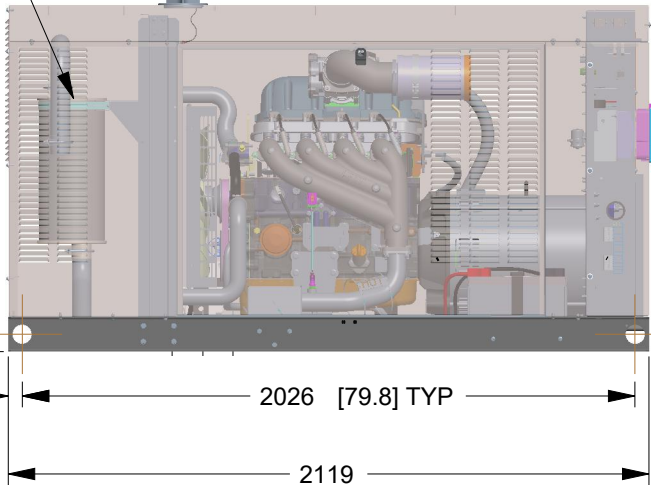
843
[33.2]
CENTER OF GRAVITY
(SEE NOTE 5)

REFERENCE OWNERS MANUAL
FOR PERIODIC REPLACEMENT
PARTS LIST

BATTERY 12V
GROUP 27F
NEGATIVE GROUND
P/N G058665

EXHAUST MUFFLER
ENCLOSED WITHIN
GENERATOR ENCLOSURE

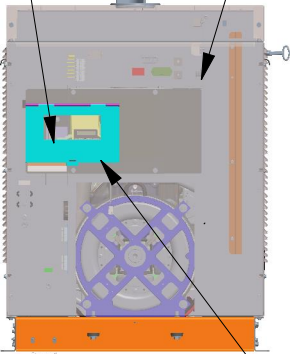
RADIATOR/EXHAUST
DISCHARGE AIR



2119
[83.4]
OVERALL LENGTH
LEFT SIDE VIEW

CIRCUIT BREAKER
SEE NOTE 3

1147 [45.1]
OVERALL
HEIGHT



REAR VIEW

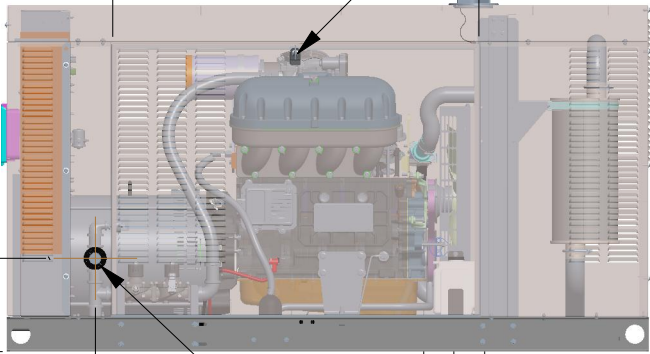
REAR ENCLOSURE
COVER PANEL
SEE NOTE 4

CUSTOMER ACCESS
ASSEMBLY, CONTROL
PANEL ACCESS
BATTERY CHARGER
LOCATED WITHIN
SEE NOTE 4

888 [35.0]
OVERALL WIDTH

1211[47.7]
DOOR TYP

VICE ACTION LATCH
ONE PER DOOR
ONE LIFT OFF DOOR PER
SIDE OF GENERATOR



RIGHT SIDE VIEW

309
[12.2]
292
[11.5]
FUEL LINE CONNECTION
1-1/4" NPT FEMALE TEE
THROUGH ENCLOSURE PANEL

DRAWING CREATED FROM PRO/ENGINEER
3D FILE. ECO MODIFICATION TO BE
APPLIED TO SOLID MODEL ONLY.

DIMENSIONS: MM [INCH]

GENERAC POWER SYSTEMS OWNS THE COPYRIGHT OF THIS DRAWING
WHICH IS SUPPLIED IN CONFIDENCE AND MUST NOT BE USED FOR
ANY PURPOSE OTHER THAN FOR WHICH IT IS SUPPLIED WITHOUT
THE EXPRESS WRITTEN CONSENT OF GENERAC POWER SYSTEMS.
©GENERAC POWER SYSTEMS 2013

ELECTRONICALLY APPROVED
INSIDE WINDCHILL

GENERAC

TITLE

INSTALL CPL G4.5L C2 48KW

ISSUE DATE:

SIZE
B

CAGE NO
N/A

DWG NO

A0000293718

REV
1

SCALE

0.040

WT-KG

SEE ABOVE

SHEET

1 of 2

INSTALLATION DRAWING

Ø13.5 X 29.5
[.53] [1.2]
MOUNTING SLOTS
4X

*NOTE:
STUB-UP AREA FOR HIGH AND LOW
VOLTAGE CONNECTIONS, CIRCUIT BREAKER,
NEUTRAL AND CUSTOMER CONNECTION OPENING.

HIGH AND LOW
VOLTAGE
STUB-UP AREA

162
[6.4]
STUB-UP
AREA

162
[6.4]
STUB-UP
AREA

REMOVABLE
STUB-UP COVER

TOP VIEW

MOUNTING SLOT CENTERS

MOUNTING SLOT CENTERS

REAR VIEW

LEFT SIDE VIEW

DRAWING CREATED FROM PRO/ENGINEER
3D FILE. ECO MODIFICATION TO BE
APPLIED TO SOLID MODEL ONLY.

DIMENSIONS: MM [INCH]

GENERAC POWER SYSTEMS OWNS THE COPYRIGHT OF THIS DRAWING
WHICH IS SUPPLIED IN CONFIDENCE AND MUST NOT BE USED FOR
ANY PURPOSE OTHER THAN FOR WHICH IT IS SUPPLIED WITHOUT
THE EXPRESS WRITTEN CONSENT OF GENERAC POWER SYSTEMS.
©GENERAC POWER SYSTEMS 2013

ELECTRONICALLY APPROVED
INSIDE WINDCHILL



TITLE

INSTALL CPL G4.5L C2 48KW

ISSUE DATE:

SIZE
B

CAGE NO
N/A

DWG NO

A0000293718

REV
1

SCALE

0.080

WT-KG

SEE SHEET 1

SHEET

2 of 2

INSTALLATION DRAWING