

WEIGHT DATA				
ENGINE/KW	ENCLOSURE MATERIAL	WEIGHT GENSET ONLY KG [LBS]	WEIGHT SHIPPING SKID KG [LBS]	SHIPPING WEIGHT KG [LBS]
4.5L/48KW	AL	808 [1781]	51 [112]	859 [1893]

SERVICE ITEM	4.5L
OIL FILL CAP	LEFT SIDE
OIL DIP STICK	LEFT SIDE
OIL FILTER	LEFT SIDE
OIL DRAIN HOSE	RIGHT SIDE
RADIATOR DRAIN HOSE	RIGHT SIDE
COOLANT RECOVERY BOTTLE	RIGHT SIDE
RADIATOR FILL CAP	ROOF TOP
AIR CLEANER ELEMENT	LEFT SIDE
SPARK PLUGS	LEFT SIDE
MUFFLER	SEE NOTE 11
DRIVE BELT	EITHER SIDE
BATTERY	LEFT SIDE

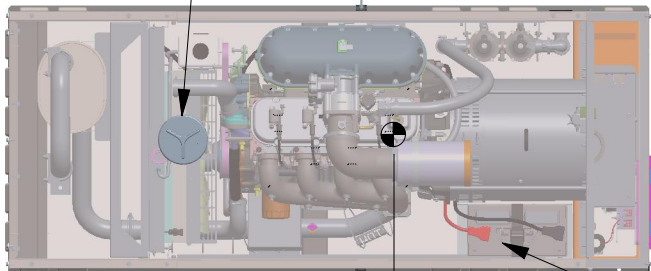
NOTES:

1. MINIMUM RECOMMENDED CONCRETE PAD SIZE IS 6" OFFSET OF OVERALL LENGTH AND WIDTH OF GENERATOR. {1193.8 (47") WIDE X 2423.2 (95.4") LONG}. REFERENCE INSTALLATION GUIDE SUPPLIED WITH THE UNIT FOR CONCRETE PAD GUIDELINES. REFERENCE MANUFACTURER'S SPECIFICATIONS IF USING ENGINEERED, PREFABRICATED SLABS.
2. ALLOW SUFFICIENT ROOM ON ALL SIDES OF THE GENERATOR FOR MAINTENANCE AND SERVICING. THIS UNIT MUST BE INSTALLED IN ACCORDANCE WITH CURRENT APPLICABLE NFPA 37 AND NFPA 70 STANDARDS AS WELL AS ANY OTHER FEDERAL, STATE, AND LOCAL CODES.
3. CONTROL PANEL / CIRCUIT BREAKER INFORMATION:
  - SEE SPECIFICATION SHEET OR OWNERS MANUAL
  - ACCESSIBLE THROUGH CUSTOMER ACCESS ASSEMBLY DOOR ON REAR OF GENERATOR.
4. REMOVE THE REAR ENCLOSURE COVER PANEL TO ACCESS THE STUB-UP AREAS AS FOLLOWS:
  - HIGH VOLTAGE CONNECTION INCLUDING AC LOAD LEAD CONDUIT CONNECTION NEUTRAL CONNECTION, BATTERY CHARGER 120 VOLT AC (0.5 AMP MAX) CONNECTION.
  - LOW VOLTAGE CONNECTION INCLUDING TRANSFER SWITCH CONTROL WIRES.
5. CENTER OF GRAVITY AND WEIGHT MAY CHANGE DUE TO UNIT OPTIONS.
6. BOTTOM OF GENERATOR SET MUST BE ENCLOSED TO PREVENT PEST INTRUSION AND RECIRCULATION OF DISCHARGE AIR AND/OR IMPROPER COOLING AIR FLOW.
7. REFERENCE OWNERS MANUAL FOR LIFTING WARNINGS.
8. MOUNTING BOLTS OR STUDS TO MOUNTING SURFACE SHALL BE 5/8-11 GRADE 5 (USE STANDARD SAE TORQUE SPECS)
9. MUST ALLOW FREE FLOW OF INTAKE AIR, DISCHARGE AIR AND EXHAUST. SEE SPEC SHEET FOR MINIMUM AIR FLOW AND MAXIMUM RESTRICTION REQUIREMENTS.
10. GENERATOR MUST BE INSTALLED SUCH THAT FRESH COOLING AIR IS AVAILABLE AND THAT DISCHARGE AIR FROM RADIATOR IS NOT RECIRCULATED.
11. EXHAUST MUFFLER ENCLOSED WITHIN GENERATOR ENCLOSURE, REMOVE FRONT PANEL TO ACCESS.

RADIATOR/EXHAUST  
DISCHARGE AIR  
(BOTH SIDES)

AIR INTAKE  
(BOTH SIDES)

REMOVE COVER  
FOR ACCESS TO  
RADIATOR FILL  
CAP



TOP VIEW

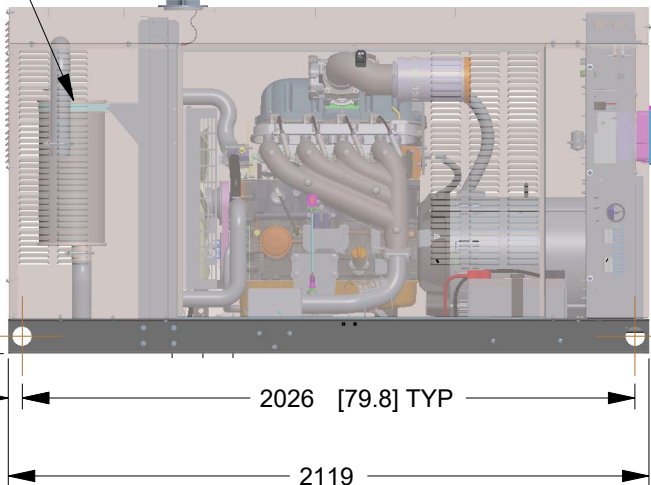
843  
[33.2]  
CENTER OF GRAVITY  
(SEE NOTE 5)

REFERENCE OWNERS MANUAL  
FOR PERIODIC REPLACEMENT  
PARTS LIST

BATTERY 12V  
GROUP 27F  
NEGATIVE GROUND  
P/N G058665

EXHAUST MUFFLER  
ENCLOSED WITHIN  
GENERATOR ENCLOSURE

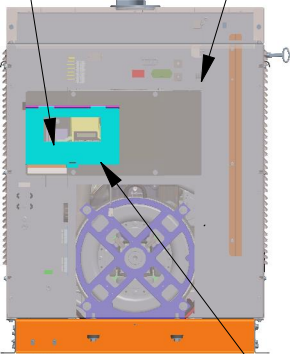
RADIATOR/EXHAUST  
DISCHARGE AIR



LEFT SIDE VIEW

CIRCUIT BREAKER  
SEE NOTE 3

1147 [45.1]  
OVERALL  
HEIGHT



REAR VIEW

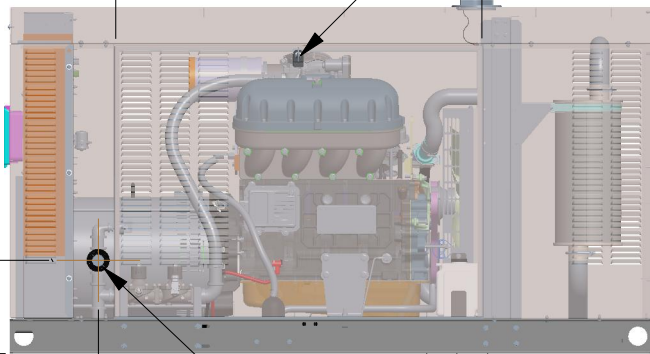
888 [35.0]  
OVERALL WIDTH

REAR ENCLOSURE  
COVER PANEL  
SEE NOTE 4

CUSTOMER ACCESS  
ASSEMBLY, CONTROL  
PANEL ACCESS  
BATTERY CHARGER  
LOCATED WITHIN  
SEE NOTE 4

1211[47.7]  
DOOR TYP

VICE ACTION LATCH  
ONE PER DOOR  
ONE LIFT OFF DOOR PER  
SIDE OF GENERATOR



RIGHT SIDE VIEW

309  
[12.2]

292  
[11.5]

FUEL LINE CONNECTION  
1-1/4" NPT FEMALE TEE  
THROUGH ENCLOSURE PANEL

DRAWING CREATED FROM PRO/ENGINEER  
3D FILE. ECO MODIFICATION TO BE  
APPLIED TO SOLID MODEL ONLY.

DIMENSIONS: MM [INCH]

GENERAC POWER SYSTEMS OWNS THE COPYRIGHT OF THIS DRAWING  
WHICH IS SUPPLIED IN CONFIDENCE AND MUST NOT BE USED FOR  
ANY PURPOSE OTHER THAN FOR WHICH IT IS SUPPLIED WITHOUT  
THE EXPRESS WRITTEN CONSENT OF GENERAC POWER SYSTEMS.  
©GENERAC POWER SYSTEMS 2013

ELECTRONICALLY APPROVED  
INSIDE WINDCHILL

**GENERAC**

TITLE

INSTALL CPL G4.5L C2 48KW

ISSUE DATE:

SIZE  
B

CAGE NO  
N/A

DWG NO

A0000293718

REV  
1

SCALE

0.040

WT-KG

SEE ABOVE

SHEET

1 of 2

# INSTALLATION DRAWING

Ø13.5 X 29.5  
[.53] [1.2]  
MOUNTING SLOTS  
4X

\*NOTE:  
STUB-UP AREA FOR HIGH AND LOW  
VOLTAGE CONNECTIONS, CIRCUIT BREAKER,  
NEUTRAL AND CUSTOMER CONNECTION OPENING.

HIGH AND LOW  
VOLTAGE  
STUB-UP AREA

162  
[6.4]  
STUB-UP  
AREA

162  
[6.4]  
STUB-UP  
AREA

REMOVABLE  
STUB-UP COVER

TOP VIEW

MOUNTING SLOT CENTERS

MOUNTING SLOT CENTERS

REAR VIEW

LEFT SIDE VIEW

DRAWING CREATED FROM PRO/ENGINEER  
3D FILE. ECO MODIFICATION TO BE  
APPLIED TO SOLID MODEL ONLY.

DIMENSIONS: MM [INCH]

GENERAC POWER SYSTEMS OWNS THE COPYRIGHT OF THIS DRAWING  
WHICH IS SUPPLIED IN CONFIDENCE AND MUST NOT BE USED FOR  
ANY PURPOSE OTHER THAN FOR WHICH IT IS SUPPLIED WITHOUT  
THE EXPRESS WRITTEN CONSENT OF GENERAC POWER SYSTEMS.  
©GENERAC POWER SYSTEMS 2013

ELECTRONICALLY APPROVED  
INSIDE WINDCHILL



TITLE

INSTALL CPL G4.5L C2 48KW

ISSUE DATE:

SIZE  
B

CAGE NO  
N/A

DWG NO

A0000293718

REV  
1

SCALE

0.080

WT-KG

SEE SHEET 1

SHEET

2 of 2

# INSTALLATION DRAWING