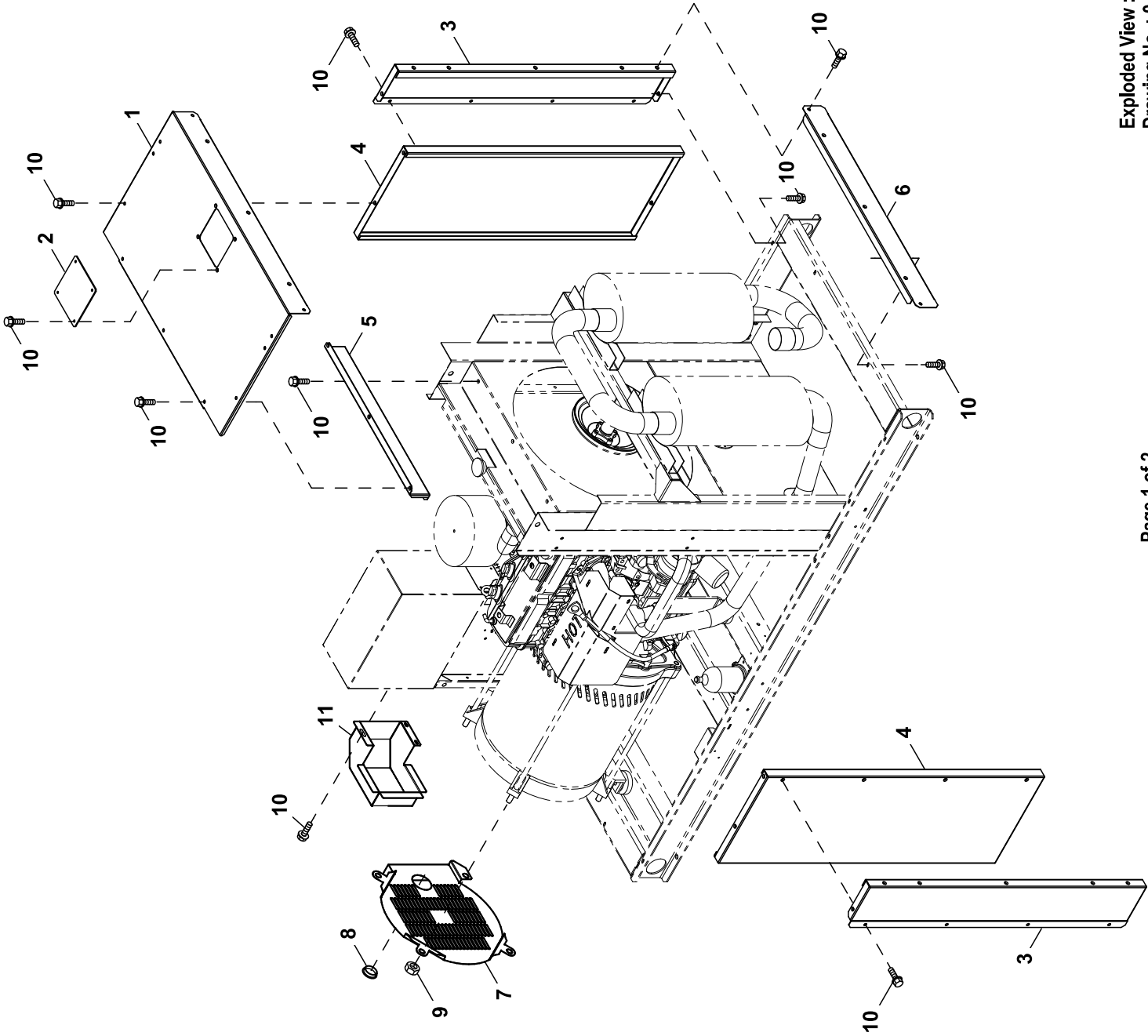


GROUP F



EXPLODED VIEW: EV ENCLOSURE (OPEN SET)**DRAWING #: 0J6792****GROUP F**

ITEM	PART#	QTY.	DESCRIPTION
1	0G2575	1	PANEL TOP QTA C2
2	0D3215B	1	ACCESS COVER 160 X 170 GALV
3	0G2577	2	PANEL SIDES FRONT QTA C2
4	0G2576	2	PANEL REAR SIDES QTA C2
5	0G2580	1	PANEL TOP MOUNT QTA C2
6	0G2579	1	PANEL LOWER FRONT QTA C2
(1)7	0J67900ST0R	1	GUARD-ALT REAR
8	023484N	1	BUSHING SNAP SB-2.5-31
9	051779	4	NUT HEX M14-2.0 G8 YEL CHR
10	0C2454	31	SCREW THF M6-1 X 16 N WA Z/JS
11	0J6789	1	WIRE TUNNEL-ALT

NOTES (UNLESS OTHERWISE SPECIFIED):

(1) SHEET METAL PARTS LISTED IN THE BOM TABLE ARE REPRESENTING GENERIC PARTS (NO COLOR)

- MANUFACTURING: FOR CORRECT MATERIAL AND COLOR REFER TO AS400 BOM.
- CUSTOMER: WHEN ORDERING REPLACEMENT PARTS ENTER BASE NUMBER (FIRST 6 DIGITS ONLY) IN THE SYSTEM FOR CORRECT MATERIAL AND COLOR (FOR REFERENCE SEE GUIDELINE 0H7169).