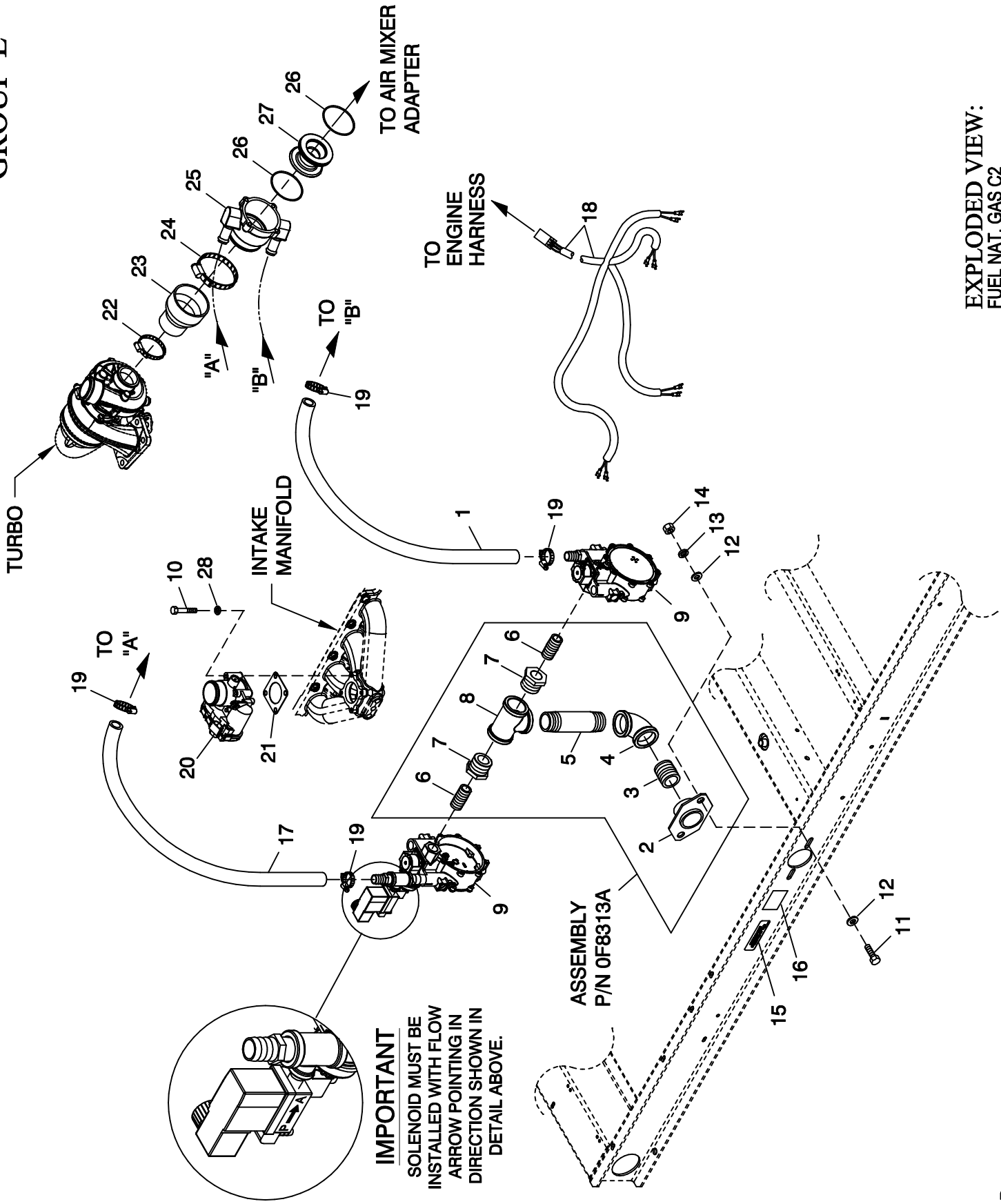


GROUP E



EXPLODED VIEW:
FUEL NAT. GAS C2
DRAWING #: 0G8694

EXPLODED VIEW: FUEL NAT. GAS C2

DRAWING #: 0G8694

GROUP E

APPLICABLE TO:

ITEM	PART #	QTY.	DESCRIPTION
1	059057	1	HOSE 3/4 ID SAE-30R2 (43"LG)
2	065908	1	FLANGE FUEL INLET
3	039130	1	NIPPLE CLOSE 1.25 NPT X 1.625
4	030131	1	ELBOW 90D 1-1/4 NPT
5	088963	1	NIPPLE PIPE 1.25 NPT X 5.5 BL IRN
6	026915	2	NIPPLE CLOSE 3/4 X 1.375
7	0A8064	2	BSHG RDCR HEX 1-1/4-3/4
8	064346	1	PIPE TEE 1-1/4 NPT
9	0G9239C	1	REG ASSY 2.4L 60KW NG CPL
10	046580	4	SCREW SHC M6-1.0 X 45 C12.9
11	043107	2	SCREW HHC M8-1.25 X 25 C8.8
12	022131	4	WASHER FLAT 3/8-M10 ZINC
13	022129	2	WASHER LOCK M8-5/16
14	045771	2	NUT HEX M8-1.25 G8 CLEAR ZINC
15	050279	1	DECAL FUEL INLET NG
16	0D1509	1	DECAL INLET PRESSURE
17	059057	1	HOSE 3/4 ID SAE-30R2 (43" LG)
18	0F6279	1	HARNES FUEL JUMPER DUAL REG
19	057823	4	CLAMP HOSE #10 .56-1.06
20	0E4394	1	ACTUATOR BOSCH 40 GOVERNOR
21	0E6586	1	GASKET BOSCH 32
22	086133C	1	CLAMP HI TORQUE 1.75 - 2.625
23	0F3857	1	REDUCER RUBBER 3.0"-2.00"
24	086133E	1	CLAMP HI TORQUE 2.75 - 3.625
25	0F3885	1	MIXER 40/60MM ACTUATOR ASSY
26	0G3167	2	O-RING 2-3/4 X 3/32 X 2-15/16
27	0F3691	1	VENTURI THROTTLE 32MM
28	022097	4	WASHER LOCK M6-1/4