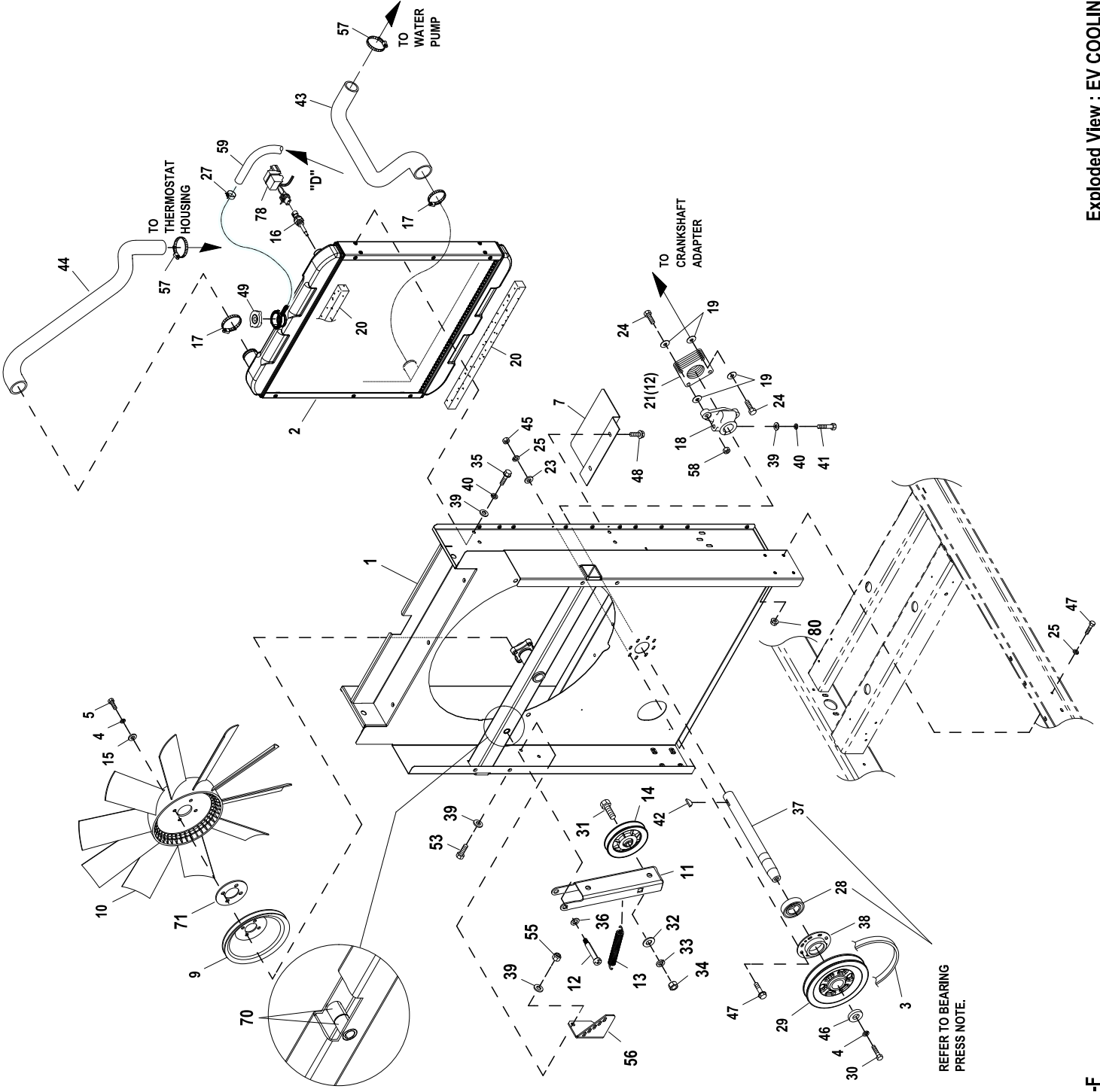
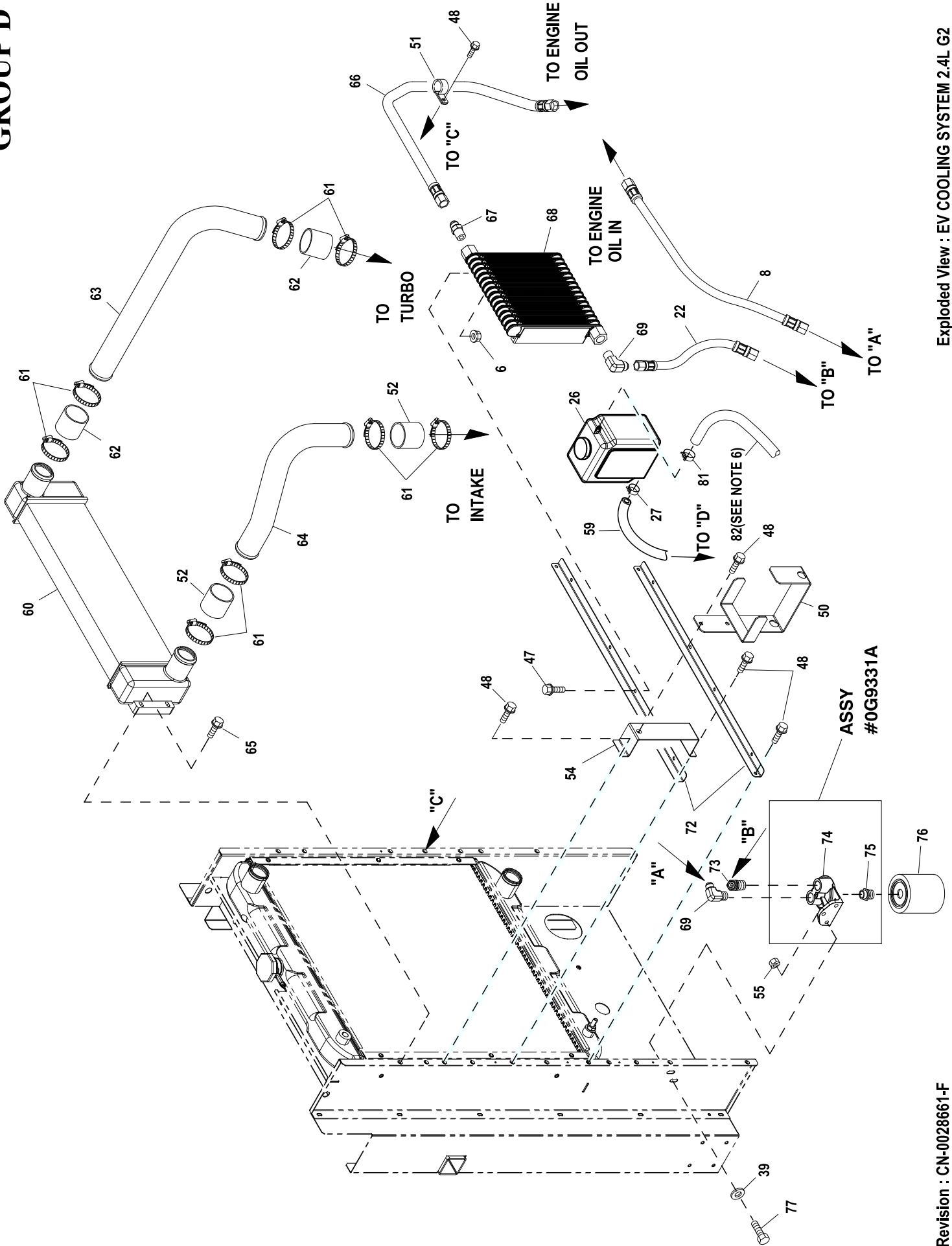


GROUP D



REFER TO BEARING
PRESS NOTE.

GROUP D



EXPLODED VIEW: EV COOLING SYSTEM 2.4L G2

DRAWING #: 0H3078

GROUP D

ITEM	PART#	QTY.	DESCRIPTION
1	0H30830ST03	1	WELDMENT RADIATOR SUPPORT C2
2	10000041323	1	RADIATOR 598 X 568 X 49 CPL RH
3	0F5263	1	V-BELT 31/64" X 57-3/8"
4	046526	5	WASHER LOCK M10
(1) 5	059981	4	SCREW HHC M10-1.5 X 30 G10.9
6	0D3700	4	NUT FLANGE M6-1.0 NYLOK
7	0F5050A	1	SHIELD RADIATOR C4
8	0G9332C	1	OIL LINE REMOTE FILTER/ENGINE
9	0F2573	1	PULLEY FAN V-GROOVE 9"
10	0F4011	1	FAN COOL 22" DIA 10 BLADE LH
11	0H20620ST03	1	ARM BELT TENSIONER
(1) 12	0H2051	1	SHOULDER BOLT 1/2 X 2-1/4"
13	0F2862	1	SPRING TENSION CPL
14	0F2560	1	PULLEY V-BELT 4" FLANGED
15	022131	4	WASHER FLAT 3/8-M10 ZINC
16	0E2507	1	PROBE COOLANT LEVEL 3/8 NPTF
	0H1827	1	PROBE COOLANT LEVEL 3/8-18NPTF
17	035685	2	CLAMP HOSE #28 1.32-2.25
18	0F2561	1	HUB FLEX PLATE
19	0C8145	8	WASHER FLEX (THIN)
20	052250	2	TAPE FOAM 1 X 1 (26.75" LG)
21	0C7043	12	DISK FLEX
22	0G9332B	1	OIL LINE REMOTE COOLER/FILTER
23	022473	8	WASHER FLAT 1/4-M6 ZINC
(1) 24	0C8146	4	SCREW HHC 5/16-24 X 1.124
25	022097	16	WASHER LOCK M6-1/4
26	076749	1	TANK COOLANT RECOVERY
(2) 27	048031C	2(REF)	CLAMP HOSE BAND 1/4
28	031971	1	BEARING #6205 2NSE C3 E SRI2 S
29	0H0271	1	PULLEY 5.125" DIA MACHINED
(1) 30	042911	1	SCREW HHC M10-1.5 X 30 G8.8
31	0F2872	1	SCREW HHC 1/2-13 X 2" G8
32	022304	1	WASHER FLAT 1/2 ZINC
33	022195	1	WASHER LOCK 1/2
34	022196	1	NUT HEX 1/2-13 STEEL
35	0F8651	8	SCREW HHFC M8-1.25 X 20 W/M6
36	052677	1	WASHER NYLON .50 X .87 X .06
37	0F9867	1	SHAFT FAN DRIVE
38	0F2461	1	RETAINER BEARING
39	022145	16	WASHER FLAT 5/16-M8 ZINC
40	022129	9	WASHER LOCK M8-5/16
(1) 41	039287	1	SCREW HHC M8-1.25 X 45 C8.8
42	082774	1	KEY WOODRUFF 4 X 19D
43	0G0795	1	HOSE LOWER RADIATOR G2
44	0G0816	1	HOSE UPPER RADIATOR G2 (USED WITH MANFLD P/N 0G0707)
	0H1546	1	HOSE UPPER RADIATOR G2 (USED WITH MANFLD P/N 0G8488)
45	049813	8	NUT HEX M6 X 1.0 G8 YEL CHR
46	052644	1	SPACER .5 X 1.5 X .25 STL/ZINC
47	0C8566	20	SCREW HHFC M6-1.0 X 20 G8.8
48	0C2454	9	SCREW THF M6-1 X 16 N WA Z/JS
49	090283	1	CAP RADIATOR 13 PSI
50	080713	1	BRACKET COOLANT TANK
51	055934M	1	CLAMP STL/VNL .75 X .343 Z
52	0A5259A	2	HOSE 2"ID X 3.0"LG
53	039253	2	SCREW HHC M8-1.25 X 20 C8.8
54	0G9595	1	BRACKET RESERVOIR MOUNTING
55	049820	5	NUT HEX LOCK M8-1.25 NY INS
56	0H30880ST03	1	BRACKET TENSIONER SPRING
57	099502	2	CLAMP HOSE #24 B1.06-2.00
58	0C8165	2	NUT HEX LOCK 5/16-24 NY INS
59	029032	1	HOSE 9/32 ID (36"LG)
60	0G3762	1	CAC 504W X 152H X 50D 2.4L G2
61	0G1285C	8	CLAMP CNST TENSION 1.75-2.625
62	071296A	2	HOSE 2"ID X 3.0"LG
63	0G3985	1	TUBE CAC IN G2 TURBO

EXPLODED VIEW: EV COOLING SYSTEM 2.4L G2**DRAWING #: 0H3078****GROUP D**

ITEM	PART#	QTY.	DESCRIPTION
64	0G3989	1	TUBE CAC OUT G2 TURBO
65	0C2454B	4	SCREW THF M6-1 X 30 N WA DELTA
66	0G9332A	1	OIL LINE REMOTE ENG/COOLER
67	0C4975	1	ADAPTOR 1/2 NPT X 3/4 JIC 3/4-16
68	0G3990	1	COOLER OIL 2.4L G2 TURBO
69	0C4973D	2	ADAPTER 90D JIC37 1/2NPT X 3/4
(4) 70	0H2844	2 (REF)	BEARING SLEEVE 1/2" X 3/4 X 1
71	0G53150AL0R	1	SPACER CPL COOLING FAN 1/8"
72	0G3986	2	MOUNT OIL COOLER 2.4L G2
73	0G9910	1	ADAPTER 45D JIC37 1/2NPT X 3/4
74	0G9331	1	MOUNT REMOTE OIL FILTER 2.4 G2
(3) 75	0G9333	1	NIPPLE-OIL FILTER
76	0A45310244	1	FILTER 1.5L/2.4L G2 OIL
77	043107	3	SCREW HHC M8-1.25 X 25 C8.8
(5) 78	0H1851	1	ASSY PCB LCL SENSOR (USE WITH I/N 16, P/N 0H1827 ONLY)
79	029333A	9	TIE WRAP UL 7.4" X .19" BLK (NOT SHOWN)
80	0D3700	8	NUT FLANGE M6-1.0 NYLOK
81	048031C	1	CLAMP HOSE BAND .50
82	029032	1	HOSE 9/32 ID (27"LG)
83	085662	3	TIE WRAP UL 14.6 X .14 BLK (NOT SHOWN)

BEARING PRESS NOTE:

APPLY LOCTITE 620 BEARING RETAINMENT COMPOUND TO BEARING SURFACE ON ITEM 37 PRIOR TO PRESSING ITEM 28 ONTO ITEM 37.

ALSO APPLY LOCTITE 620 BEARING RETAINMENT COMPOUND TO THE OUTSIDE OF 28 PRIOR TO INSTALLING ITEM 28 INTO ITEM 38.

- (1) APPLY MEDIUM STRENGTH BLUE THREAD LOCKING FLUID TO THREADS.
- (2) INCLUDED WITH I/N 26.
- (3) APPLY LOCTITE #266 TO I/N 75 PRIOR TO ASSEMBLY.
- (4) ITEM 70 IS INCLUDED WITH ITEM 1.
- (5) USE WITH R-200 CONTROL PANEL ONLY.
- (6) FASTEN HOSE TO RADIATOR SUPPORT USING TIE WRAP I/N 83. DIRECT HOSE TOWARD BASE OF UNIT.