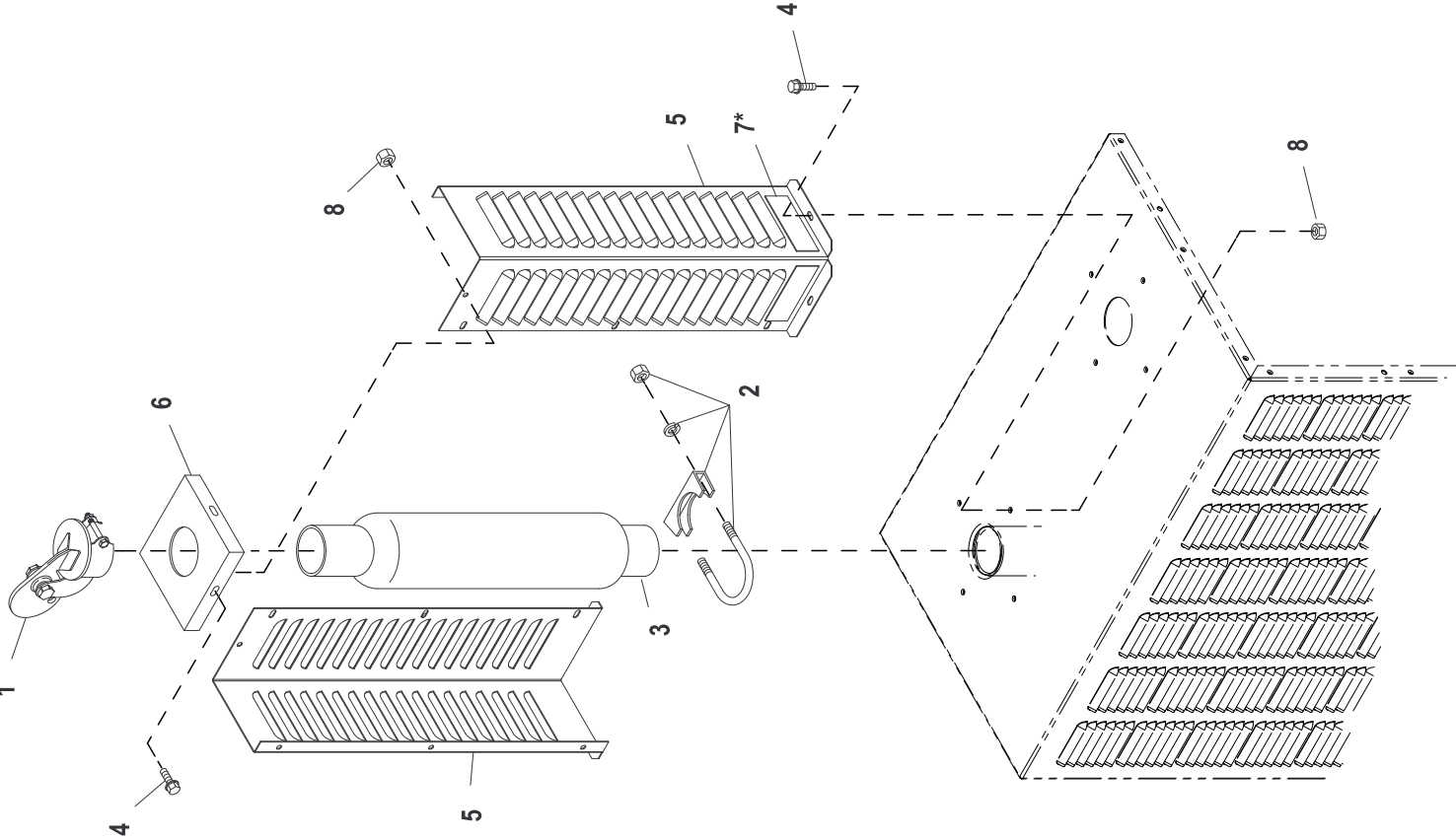


GROUP D



## EXPLODED VIEW: EV KIT GLASS PACK SHIP LOOSE

DRAWING #: 0F6332A

# GROUP

ITEM	PART#	QTY.	DESCRIPTION
1	0F4462	1	RAIN CAP 2-1/2" AL
2	080762	1	BOLT U 3/8-16 X 2.62
3	0F4505A	1	MUFF SEC 23.5" X 2.55IN/2.5OUT
4	0C2454	14	SCREW THF M6-1X16 N WA Z/JS
(2) 5	0F4367	2	HEAT SHIELD EXHAUST STACK
(2) 6	0F4368	1	CAP HEAT SHIELD EXHAUST STACK
(1) 7	0G3263	3	DECAL WARNING HOT SURFACES BI
(3) 8	077992	14	NUT HEX LOCK M6-1.0 SS NY INS

NOTE:

SOME "QT SERIES" UNITS WILL REQUIRE (2) GLASS PACK KITS.

(1) DECALS APPLIED TO EXHAUST AT THE FACTORY.

(2) PART NUMBER SHOWN IS FOR TAN. SEE GUIDE BELOW FOR AVAILABLE COLOR AND PART NUMBER FORMAT.

0FXXXX = TAN

0FXXXX0AL08 = GRAY / ALUMINUM

0FXXXX0AL13 = BISQUE / ALUMINUM

0FXXXX0AL05 = WHITE / ALUMINUM

0FXXXX0AL14 = GRAY / ALUMINUM

(3) ) ALUMINUM ENCLOSURE NOTE: ITEM NUMBER 5 TO BE SECURED USING ITEM NUMBERS 4 (THREAD FORMING FASTENER) & 8 (LOCK NUT). THE LOCK NUT IS TO BE INSTALLED AFTER THREAD FORMING FASTENER HAS PENETRATED THROUGH EXTRUSIONS IN ENCLOSURE PANELS.

### GLASS PACK KIT ASSEMBLY INSTRUCTIONS:

1) Disconnect battery cables to prevent accidental start-up. Disconnect the negative battery cable first from the battery post indicated by (-) or NEG.

2) Slide the U-bolt (080762, I/N 2 ) and muffler (0F4505, I/N 3) over the exhaust pipe protruding from the enclosure. The exhaust pipe should be inserted 2 to 3 inches into the inlet of the muffler (0F4505, I/N 3). Position the U-bolt over the inlet of the muffler and tighten.

3) Sub-assemble the heat shield panels (0F4367, I/N 5) and the heat shield cap (0F4368, I/N 6) using the screws provided (0C2454, I/N 4). Lock nuts (077992, I/N 8) should be installed after the fastener has penetrated through the extrusions in the heat shield panels.

4) Slide the heat shield subassembly over the muffler.

5) Fasten the heat shield assembly to the enclosure using the screws provided (0C2454, I/N 4). Lock nuts (077992, I/N 8) should be installed after the fastener has penetrated through the extrusions in the enclosure. An access panel may need to be removed to complete this step.

6) Install the rain cap over the outlet of the muffler and tighten (0F4462, I/N 1).