

4

3

2

1

D

D

C

C

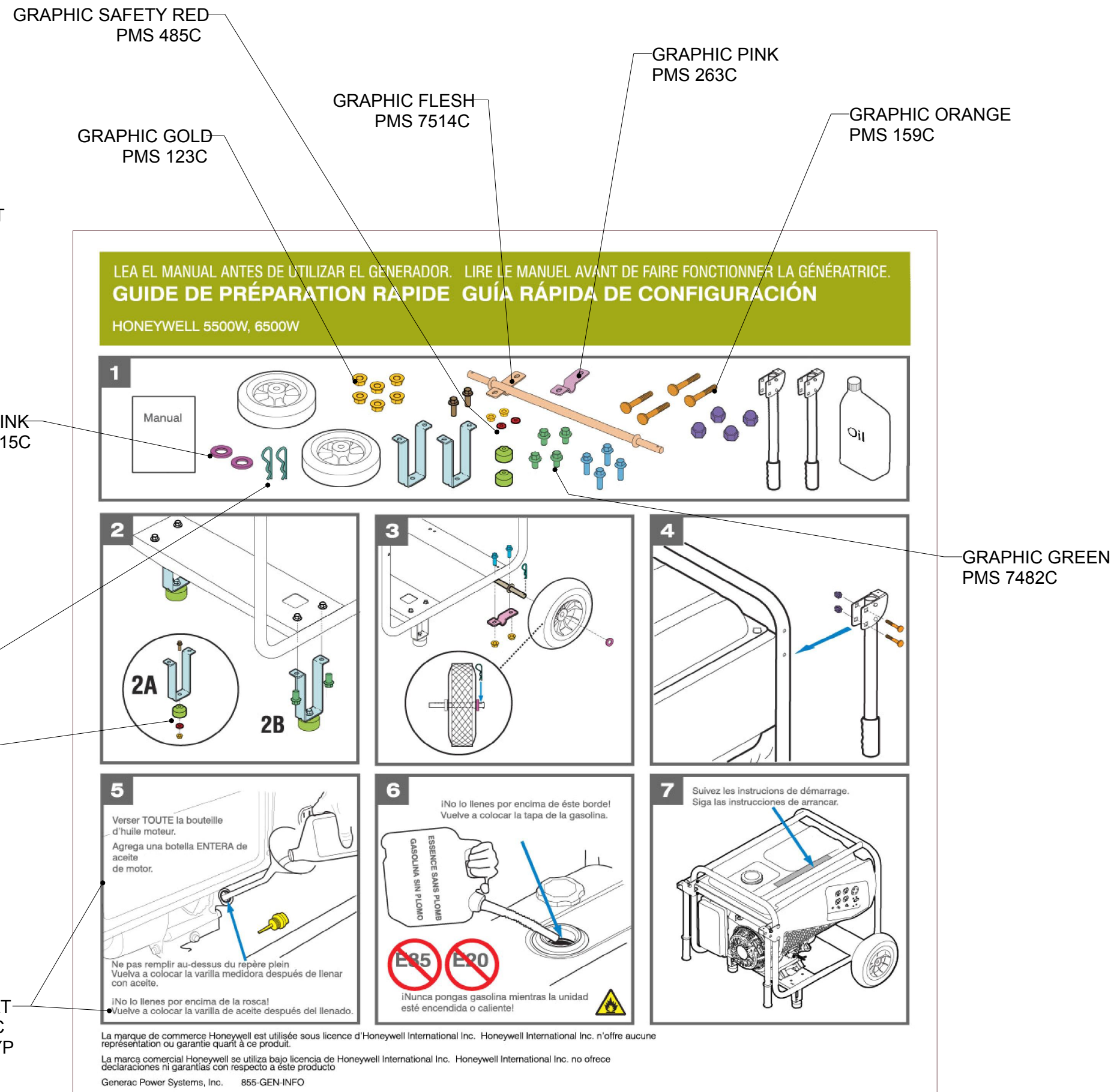
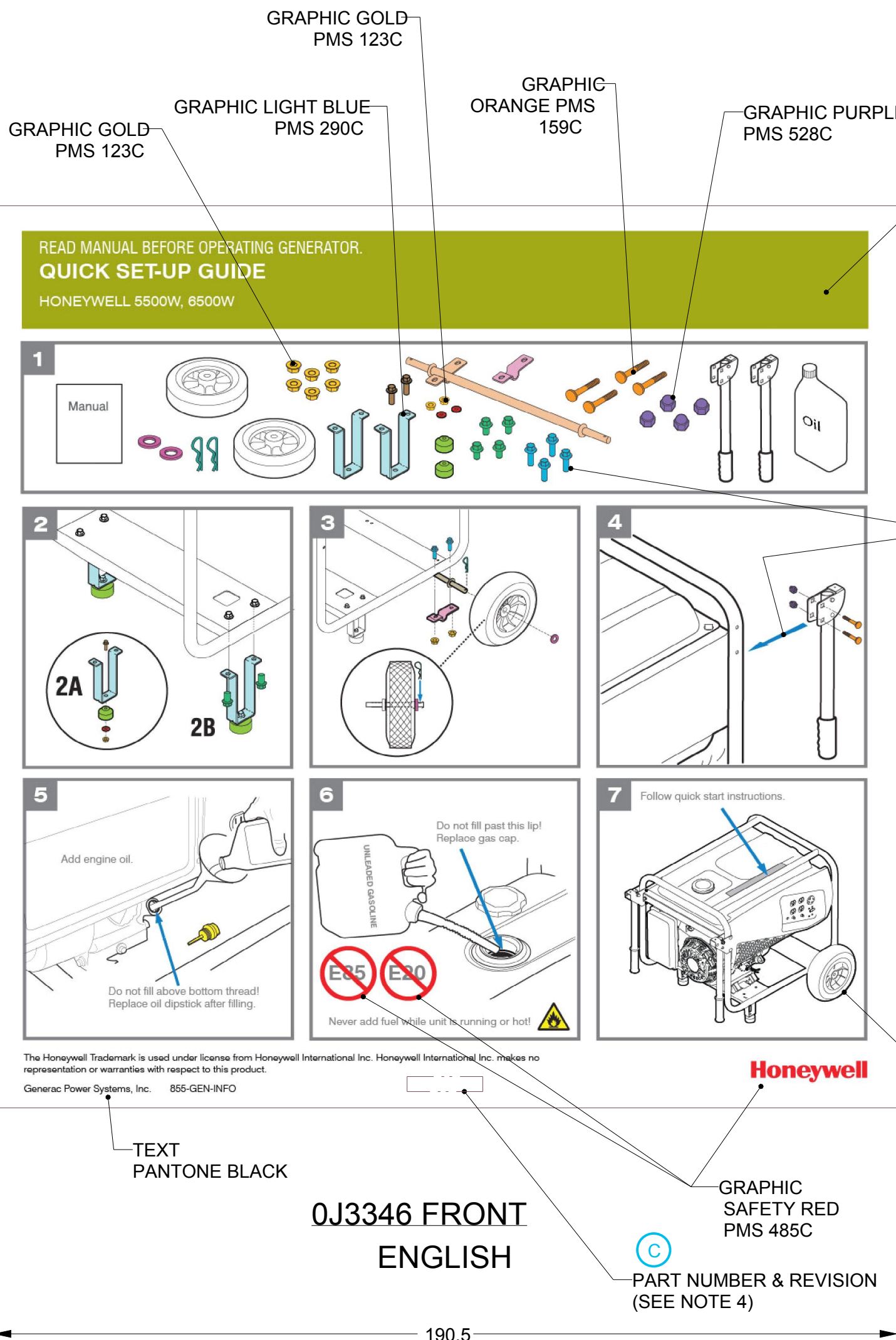
B

B

A

A

190.5
[7.5]



- NOTES:
1. FONT STYLE, TEXT SIZE, AND COLORS PER SUPPLIED ARTWORK
OJ3346.EPS AND OJ3346A.EPS.
 2. MATERIAL: 80 GSM, 102-104% BRIGHTNESS UNCOATED WHITE PAPER (MINIMUM).
 3. DIMENSIONS ARE MM [INCHES].
 4. LOCATION OF PART NUMBER: AS SHOWN ABOVE. PART NUMBER AND REVISION TO BE ADDED BY DECAL SUPPLIER. LETTERING TO BE HELVETICA, FONT SIZE 10 POINT, BLACK.

DRAWING CREATED FROM PRO/ENGINEER
3D FILE. ECO MODIFICATION TO BE
APPLIED TO SOLID MODEL ONLY.

6/14/11	-A	RELEASED.			
5/30/12	J-1986-B	MATERIAL WAS 0.007" WHITE SYNTHETIC PAPER-VINYL.			
6/26/12	J-2117-C	ADD PN AND NOTE 4.			
11/7/12	J-3236-D	UPDATED ARTWORK PER MISSING COMPONENTS IN SECTION 1; UPDATED HARDWARE IN SECTION 2.			

GENERAL TOLERANCES UNLESS NOTED	
ALL XX = ± 1" XX.X = ± 1" XX.XX = ± 1" XX.XXX = ± 1" ALL ANG = ± 1° INTERPRET DIM AND TOL PER ASME Y14.5M-1994	THIRD ANGLE PROJECTION
DATUM INDICATING SYMBOL	PERPENDICULARITY
POSITION	ANGULARITY
PROFILE OF A SURFACE	CIRCULAR RUNOUT
FLATNESS	PARALLELISM

GENERAC POWER SYSTEMS OWNS THE COPYRIGHT OF THIS DRAWING WHICH IS SUPPLIED IN CONFIDENCE AND MUST NOT BE USED FOR ANY PURPOSE OTHER THAN FOR WHICH IT IS SUPPLIED WITHOUT THE EXPRESS WRITTEN CONSENT OF GENERAC POWER SYSTEMS. © GENERAC POWER SYSTEMS 2010	
APPROVALS	DATE
DRAWN BY DMC	6/13/11
CHECKED BY KC	6/14/11
MFG ENG	
APPROVED BY KB	6/14/11
FIRST USE: 06036-0	
ELECTRONICALLY APPROVED INSIDE WINDCHILL	
LIFECYCLE STATE: Production Released (17)	

P/N	DESCRIPTION	PAGE
OJ3346	CARD QUICK START HNYWL PS	1
OJ3346A	CARD QUICK START HNYWL ES	2

TITLE CARD QUICK START HNYWL	
MATERIAL SEE ABOVE	GENERAC SPECIFICATION AS ABOVE
PAINT SURFACE FINISH	
SIZE C	CAGE NO N/A
DWG NO 0J3346\$	REV D
SCALE 1.000	WT-KG N/A
SHEET 1 of 2	

4

3

2

1

D

D

C

C

B

SH
2/2
REV D

A

A

4

3

2

1

DRAWING CREATED FROM PRO/ENGINEER
3D FILE. ECO MODIFICATION TO BE
APPLIED TO SOLID MODEL ONLY.

READ MANUAL BEFORE OPERATING GENERATOR.
QUICK SET-UP GUIDE
HONEYWELL 5500E, 7500E

1

Manual

2

2A

2B

3

3A

3B

4

5

Do not fill above bottom thread!
Replace oil dipstick after filling.

6

Do not fill past this lip!
Replace gas cap.

Never add fuel while unit is running or hot!

7

Follow quick start instructions.

Honeywell

The Honeywell Trademark is used under license from Honeywell International Inc. Honeywell International Inc. makes no representation or warranties with respect to this product.
Generac Power Systems, Inc. 855-GEN-INFO

0J3346A FRONT
ENGLISH

*ALL UNSPECIFIED DIMENSIONS, NOTES, AND COLORS ARE THE SAME AS 0J3346

LEA EL MANUAL ANTES DE UTILIZAR EL GENERADOR. LIRE LE MANUEL AVANT DE FAIRE FONCTIONNER LA GÉNÉRATRICE.
GUIDE DE PRÉPARATION RAPIDE **GUÍA RÁPIDA DE CONFIGURACIÓN**
HONEYWELL 5500E, 7500E

1

Manual

2

2A

2B

3

3A

3B

4

5

Verser huile de moteur.
Agrega aceite de motor.

Ne pas remplir au-dessus du repère plein
Vuelva a colocar la varilla medidora después de llenar con aceite.

!No lo llenes por encima de la rosca!
Vuelva a colocar la varilla de aceite después del llenado.

6

!No lo llenes por encima de éste borde!
Vuelva a colocar la tapa de la gasolina.

!Nunca pongas gasolina mientras la unidad esté encendida o caliente!

7


Suivez les instructions de démarrage.
Siga las instrucciones de arrancar.

Honeywell

SAFETY RED PMS 485C
PANTONE WHITE TEXT
TYP

La marque de commerce Honeywell est utilisée sous licence d'Honeywell International Inc. Honeywell International Inc. n'offre aucune représentation ou garantie quant à ce produit.
La marca comercial Honeywell se utiliza bajo licencia de Honeywell International Inc. Honeywell International Inc. no ofrece declaraciones ni garantías con respecto a este producto.
Generac Power Systems, Inc. 855-GEN-INFO

0J3346A BACK
SPANISH CASTILIAN
FRENCH CANADIAN

GENERAL TOLERANCES UNLESS NOTED	
ALL XX = ± 1" XX.X = ± 1" XX.XX = ± 1" XX.XXX = ± 1" ALL ANG = ± 1° INTERPRET DIM AND TOL PER ASME Y14.5M-1994	THIRD ANGLE PROJECTION 

GENERAC®					
SIZE C	CAGE NO N/A	DWG NO 0J3346\$		REV D	
SCALE	1.000	WT-KG	N/A	SHEET	2 of 2