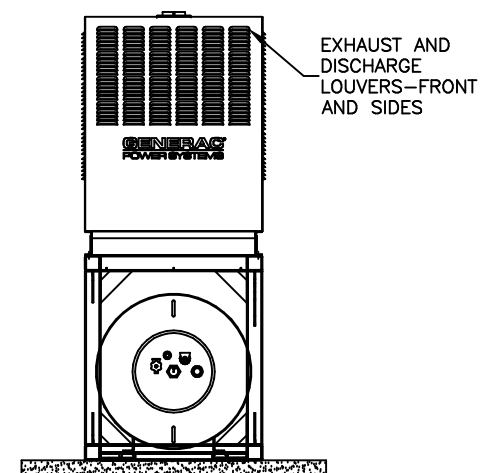
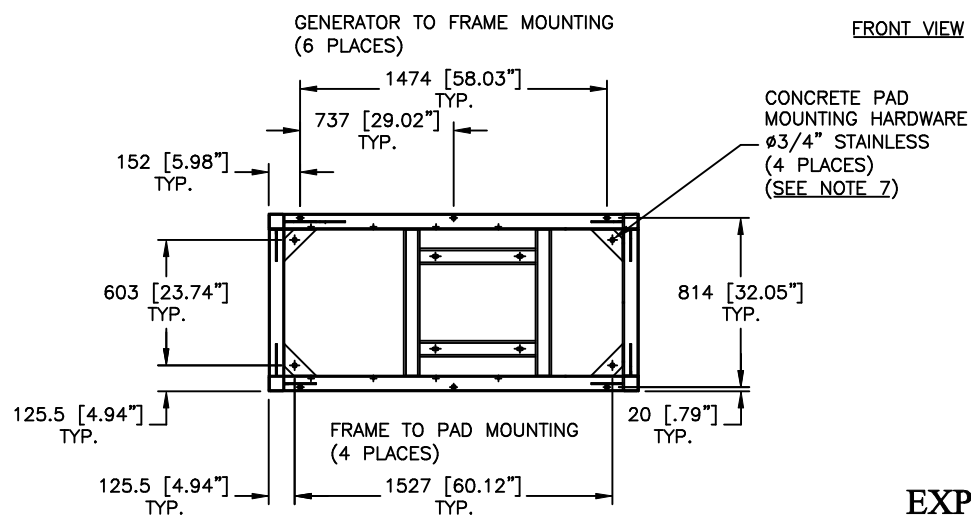


GROUP G

- 1) MINIMUM RECOMMENDED CONCRETE PAD SIZE: 1463.6 [57.62"] WIDE X 2387.6 [94"] LONG. REFERENCE INSTALLATION GUIDE SUPPLIED WITH UNIT FOR CONCRETE PAD GUIDELINES.
- 2) ALLOW SUFFICIENT ROOM ON ALL SIDES OF THE GENERATOR FOR MAINTENANCE AND SERVICING. THIS UNIT MUST BE INSTALLED IN ACCORDANCE WITH CURRENT APPLICABLE NFPA 37 AND NFPA 70 STANDARDS AS WELL AS ANY OTHER FEDERAL, STATE AND LOCAL CODES FOR MINIMUM DISTANCES FROM OTHER STRUCTURES.
- 3) CIRCUIT BREAKER INFORMATION:
SEE SPECIFICATION SHEET WITHIN OWNERS MANUAL.
- 4) INSIDE STUB-UP AREA FOR AC LOAD LEAD CONDUIT CONNECTION, NEUTRAL CONNECTION, BATTERY CHARGER 120 VOLT AC (.5 AMP MAX.) CONNECTION AND ACCESS TO TRANSFER SWITCH CONTROL WIRES. REMOVE FRONT COVER FOR ACCESS.
- 5) REFERENCE OWNERS MANUAL FOR LIFTING WARNINGS. HOLES ARE $\phi 63.5$ [2.5"] AND SPACED 1685 [66.34"] APART. INSTALL COVERS AFTER LIFTING INTO PLACE.
- 6) REMOVE EITHER LEFT OR RIGHT HAND SIDE PANEL TO ACCESS EXHAUST MUFFLER.
- 7) WIND LOAD AND CALCULATIONS (AT 150MPH), FOR MOUNTING TO CONCRETE PAD. RECOMMEND A MINIMUM BOLT OF $\phi 3/4$ " (A307) IN CONCRETE OF STRENGTH $f'_c = 3,000\text{PSI}$ WITH EMBEDMENT IN CONCRETE OF 5". SMALLER DIAMETER AND BOLT LENGTH WILL RESULT IN DECREASED MOUNTING WIND LOAD RESISTANCE CAPABILITY.
- 8) DO NOT RUN ANY 2 WIRE START OR COMMUNICATION WIRE WITH ANY AC POWER RUNS.
- 9) CONCRETE PAD (DESIGNED AND INSTALLED BY OTHERS) MUST BE CONSTRUCTED TO ADEQUATE PARAMETERS OR TIPPING OF UNIT MAY RESULT, EVEN WITH LAGGING AS INDICATED IN NOTE 7.
- 10) APPLY A BEAD OF TRANSPARENT 100% SILICONE CAULK/SEALANT ALL AROUND BETWEEN THE GENSET BASE FRAME AND THE LP TANK/FRAME.



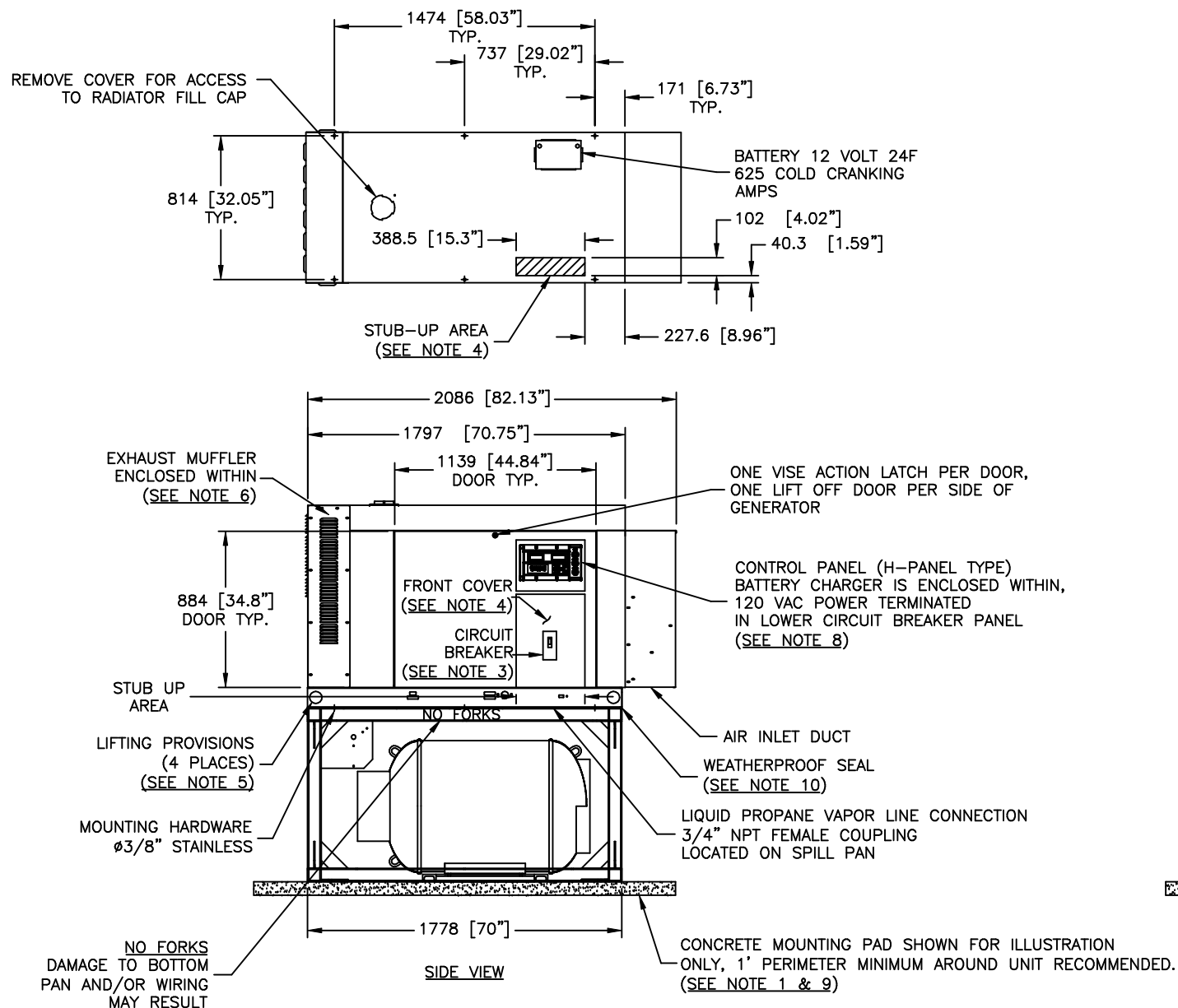
FRONT VIEW



TOP VIEW OF TANK FRAME

EXPLODED VIEW:
30KW TELECOM 4.2L (30KW) - G3
DRAWING #: 0G6753

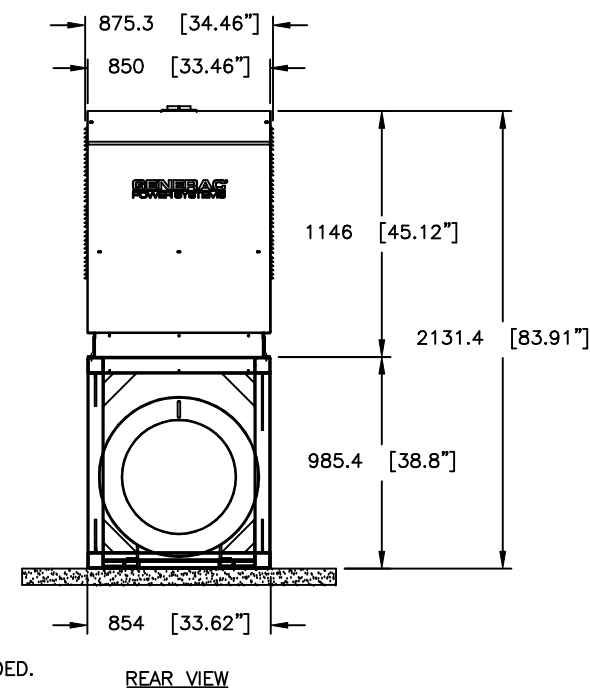
GROUP G



SERVICE ITEM ACCESSIBILITY CHART

SERVICE ITEM	4.2L 30KW
OIL FILL CAP	THRU LEFT DOOR
OIL DIP STICK	THRU LEFT DOOR
OIL FILTER	THRU LEFT DOOR
OIL DRAIN HOSE	THRU RIGHT DOOR
RADIATOR DRAIN HOSE	THRU RIGHT DOOR
AIR CLEANER ELEMENT	THRU RIGHT DOOR
SPARK PLUGS	BOTH DOORS
MUFFLER	SEE NOTE 6
FAN BELT	EITHER DOOR
BATTERY	THRU RIGHT DOOR

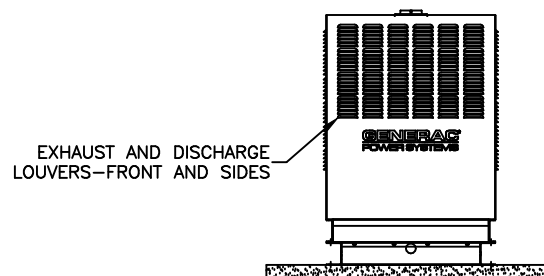
REFERENCE OWNERS MANUAL FOR PERIODIC REPLACEMENT PART LISTINGS



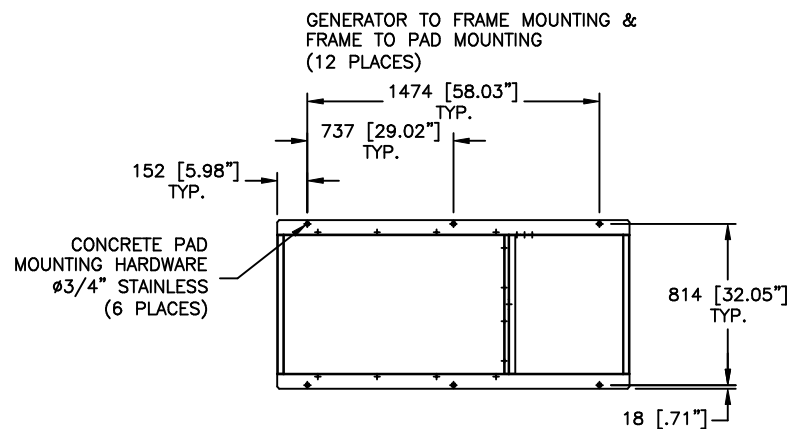
EXPLODED VIEW:
30KW TELECOM 4.2L (30KW) - G3
DRAWING #: 0G6753

NOTES:

- 1) MINIMUM RECOMMENDED CONCRETE PAD SIZE: 1463.6 [57.62"] WIDE X 2387.6 [94"] LONG. REFERENCE INSTALLATION GUIDE SUPPLIED WITH UNIT FOR CONCRETE PAD GUIDELINES.
- 2) ALLOW SUFFICIENT ROOM ON ALL SIDES OF THE GENERATOR FOR MAINTENANCE AND SERVICING. THIS UNIT MUST BE INSTALLED IN ACCORDANCE WITH CURRENT APPLICABLE NFPA 37 AND NFPA 70 STANDARDS AS WELL AS ANY OTHER FEDERAL, STATE AND LOCAL CODES FOR MINIMUM DISTANCES FROM OTHER STRUCTURES.
- 3) CIRCUIT BREAKER INFORMATION:
SEE SPECIFICATION SHEET WITHIN OWNERS MANUAL.
- 4) INSIDE STUB-UP AREA FOR AC LOAD LEAD CONDUIT CONNECTION, NEUTRAL CONNECTION, BATTERY CHARGER 120 VOLT AC (.5 AMP MAX.) CONNECTION AND ACCESS TO TRANSFER SWITCH CONTROL WIRES. REMOVE FRONT COVER FOR ACCESS.
- 5) REFERENCE OWNERS MANUAL FOR LIFTING WARNINGS. HOLES ARE $\phi 63.5$ [$\phi 2.5$] AND SPACED 1685 [66.34"] APART. INSTALL COVERS AFTER LIFTING INTO PLACE.
- 6) REMOVE EITHER LEFT OR RIGHT HAND SIDE PANEL TO ACCESS EXHAUST MUFFLER.
- 7) WIND LOAD AND CALCULATIONS (AT 150MPH), FOR MOUNTING TO CONCRETE PAD. RECOMMEND A MINIMUM BOLT OF $\phi 3/4$ " (A307) IN CONCRETE OF STRENGTH $f'_c = 3,000$ PSI WITH EMBEDMENT IN CONCRETE OF 5". SMALLER DIAMETER AND BOLT LENGTH WILL RESULT IN DECREASED MOUNTING WIND LOAD RESISTANCE CAPABILITY.
- 8) DO NOT RUN ANY 2 WIRE START OR COMMUNICATION WIRE WITH ANY AC POWER RUNS.
- 9) CONCRETE PAD (DESIGNED AND INSTALLED BY OTHERS) MUST BE CONSTRUCTED TO ADEQUATE PARAMETERS OR TIPPING OF UNIT MAY RESULT, EVEN WITH LAGGING AS INDICATED IN NOTE 7.



FRONT VIEW



TOP VIEW OF N/G RISER FRAME

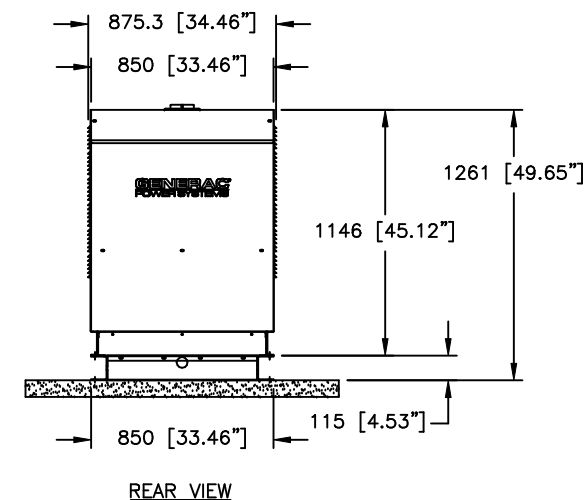
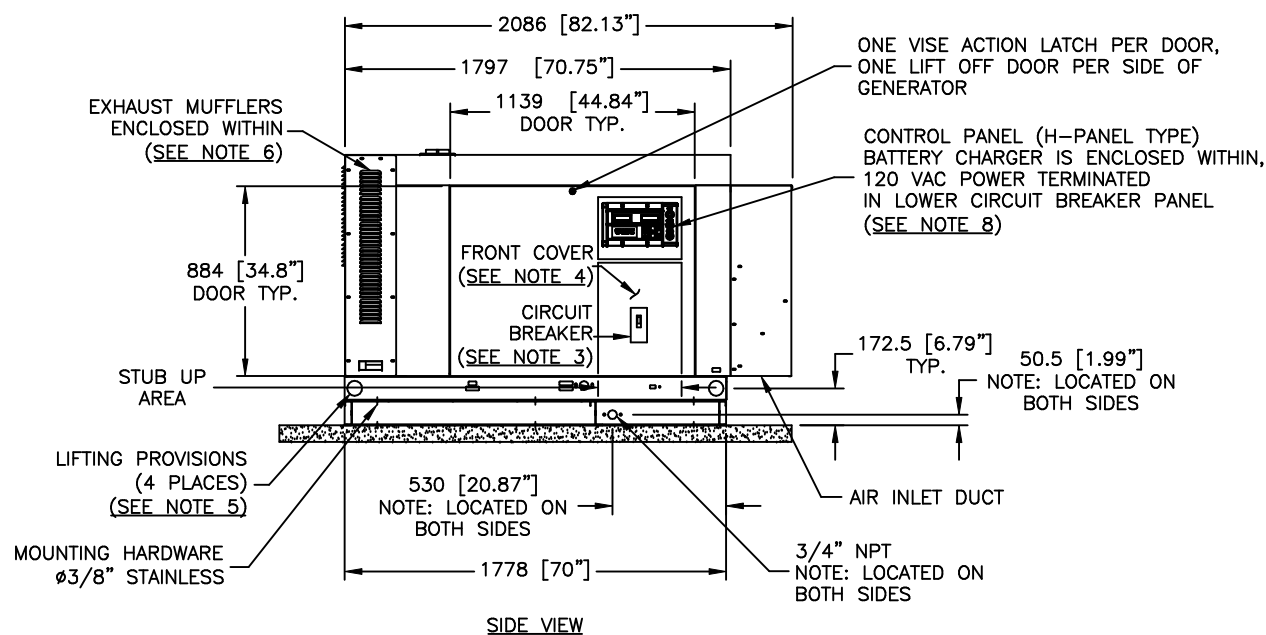
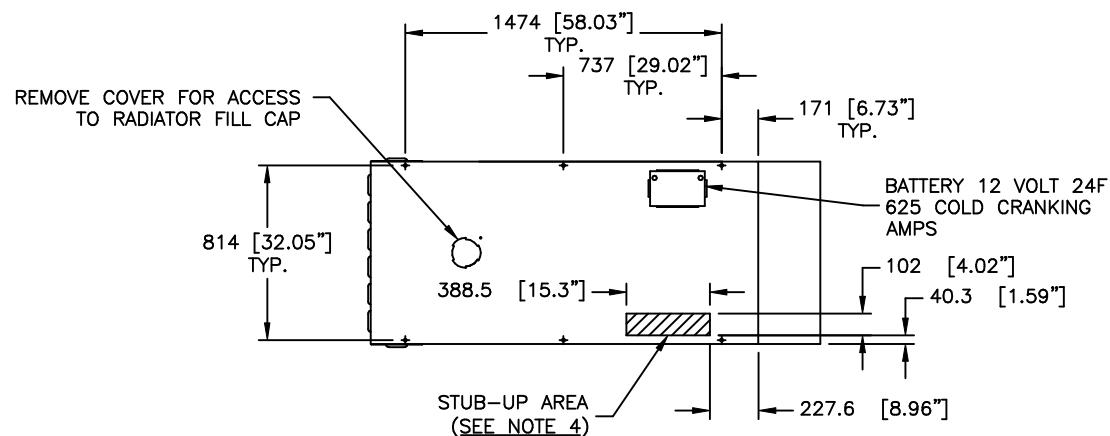
EXPLODED VIEW:
30KW TELECOM 4.2L (30KW) - G3
DRAWING #: 0G6753

GROUP G

SERVICE ITEM ACCESSIBILITY CHART

SERVICE ITEM	4.2L 30KW
OIL FILL CAP	THRU LEFT DOOR
OIL DIP STICK	THRU LEFT DOOR
OIL FILTER	THRU LEFT DOOR
OIL DRAIN HOSE	THRU RIGHT DOOR
RADIATOR DRAIN HOSE	THRU RIGHT DOOR
AIR CLEANER ELEMENT	THRU RIGHT DOOR
SPARK PLUGS	BOTH DOORS
MUFFLER	SEE NOTE 6
FAN BELT	EITHER DOOR
BATTERY	THRU RIGHT DOOR

REFERENCE OWNERS MANUAL FOR PERIODIC REPLACEMENT PART LISTINGS



EXPLODED VIEW:
30KW TELECOM 4.2L (30KW) - G3
DRAWING #: 0G6753