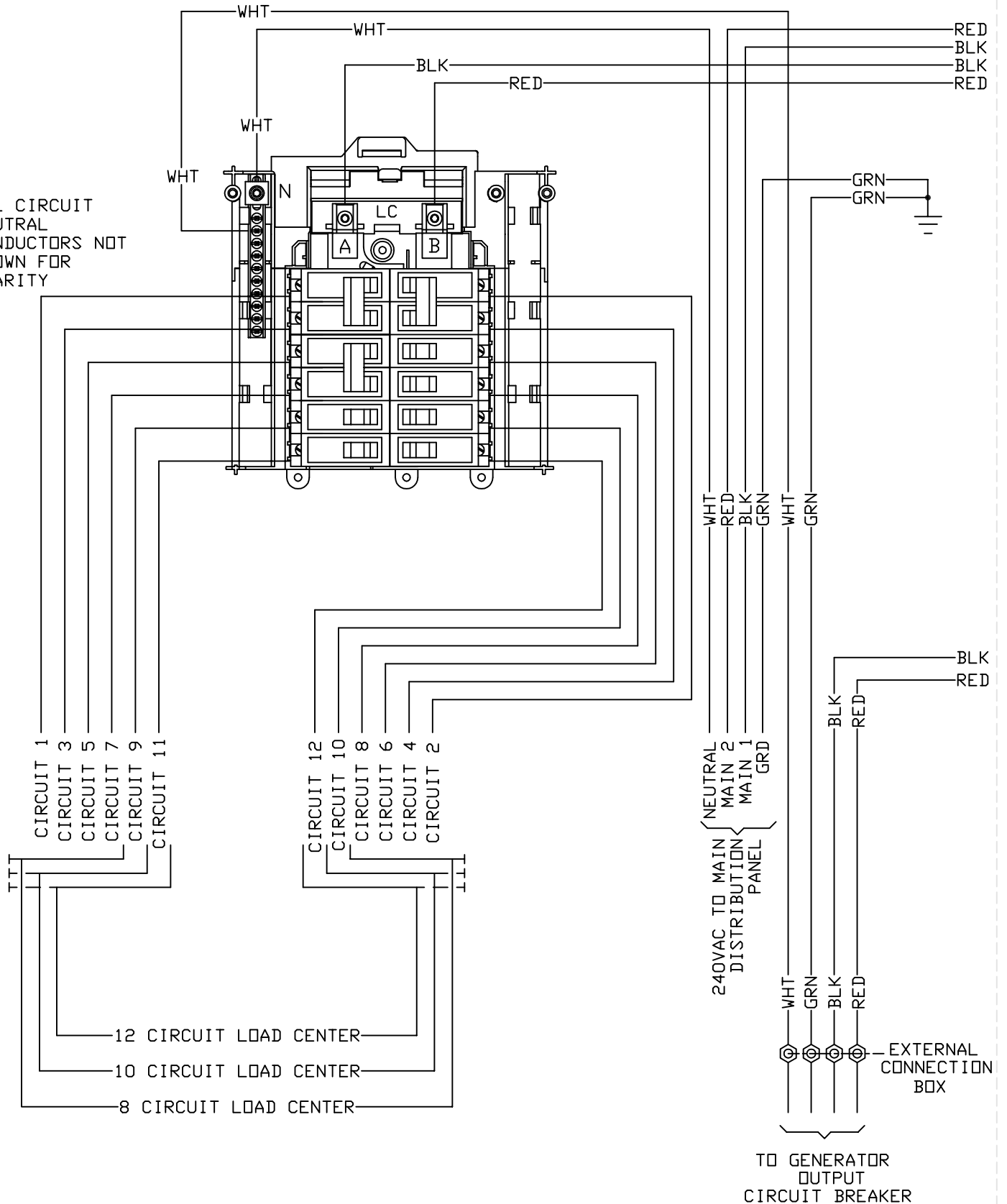
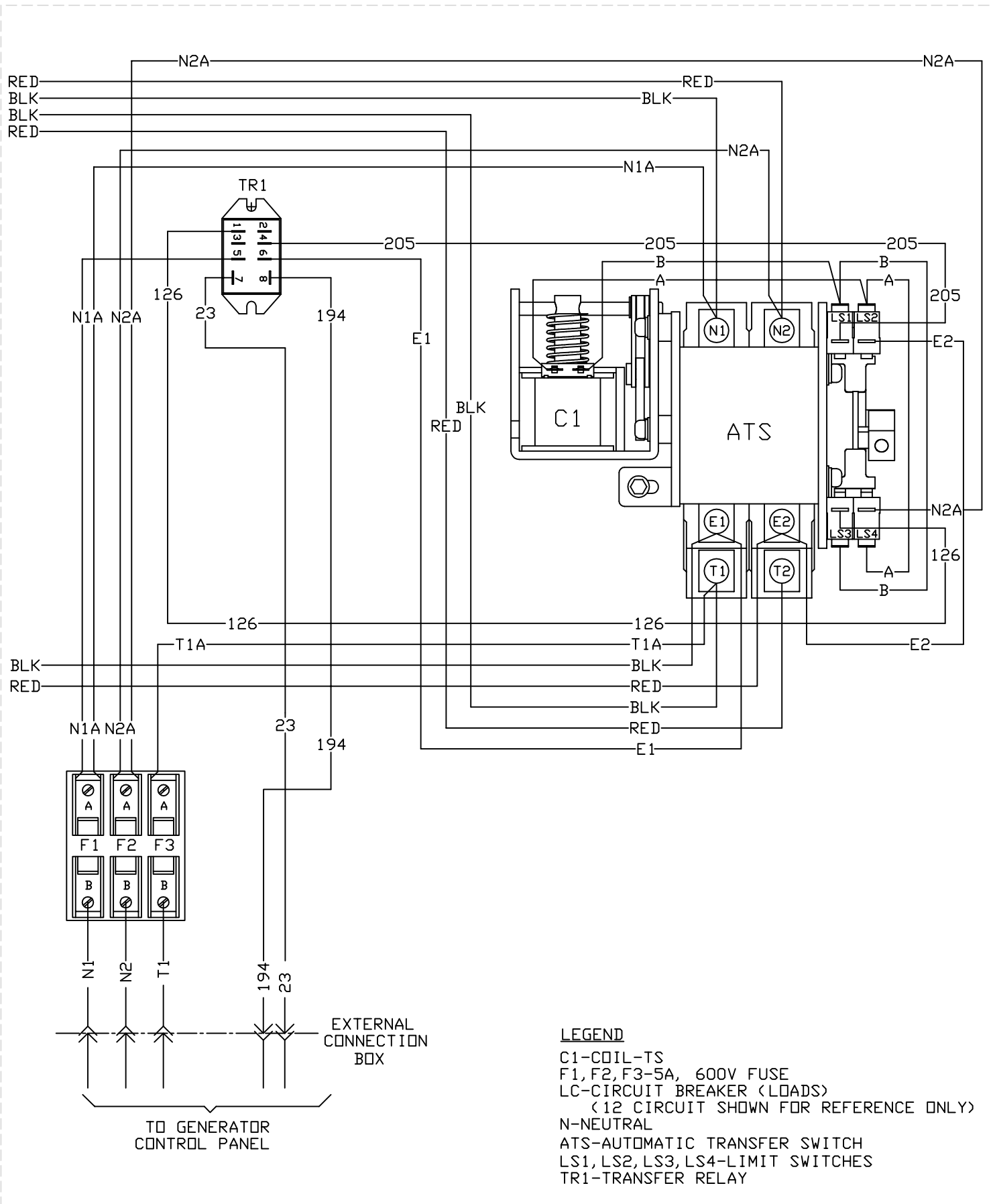


GROUP G

ALL CIRCUIT
NEUTRAL
CONDUCTORS NOT
SHOWN FOR
CLARITY



GROUP G



LEGEND

- C1-COIL-TS
- F1, F2, F3-5A, 600V FUSE
- LC-CIRCUIT BREAKER (LOADS)
(12 CIRCUIT SHOWN FOR REFERENCE ONLY)
- N-NEUTRAL
- ATS-AUTOMATIC TRANSFER SWITCH
- LS1, LS2, LS3, LS4-LIMIT SWITCHES
- TR1-TRANSFER RELAY