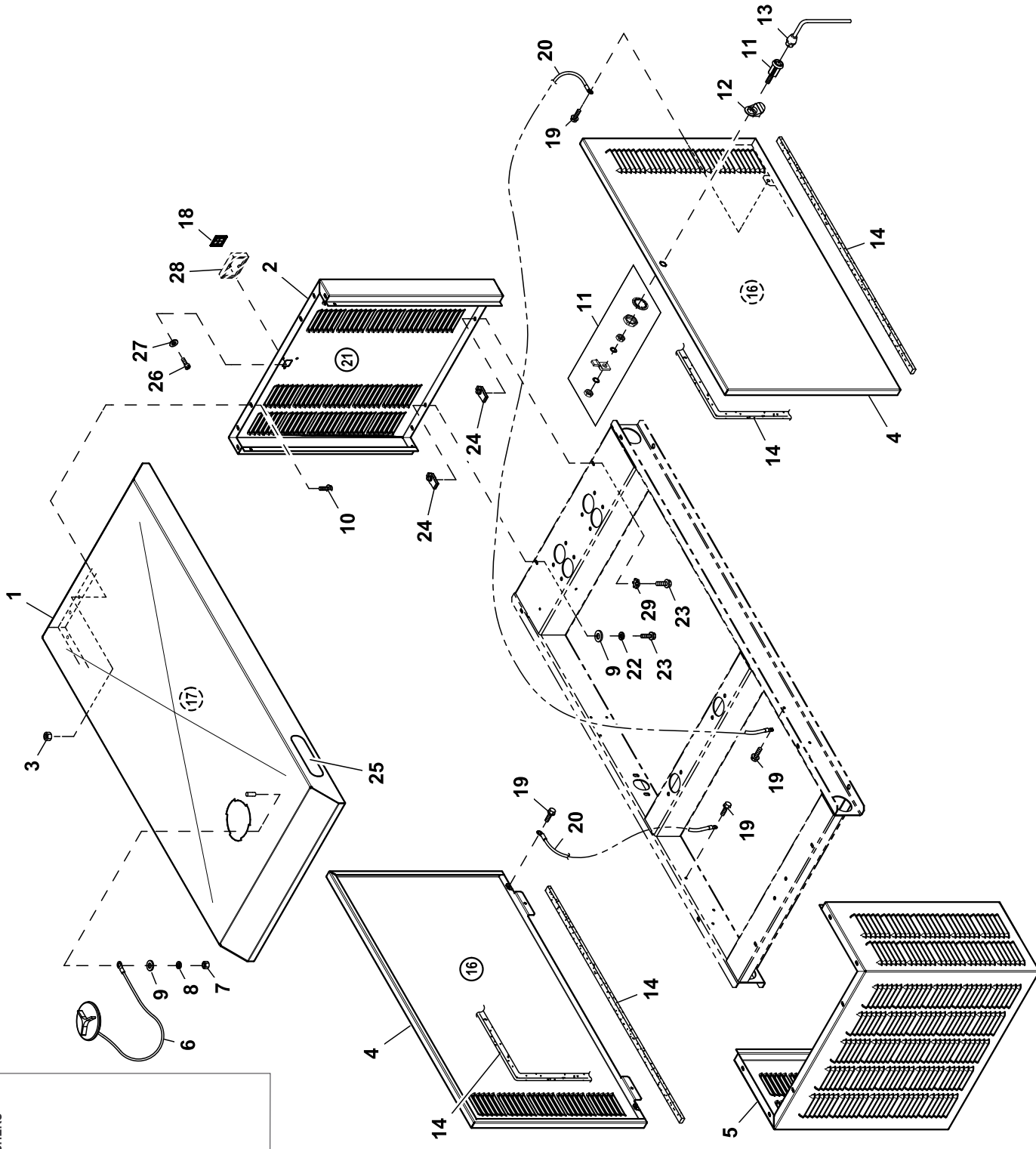
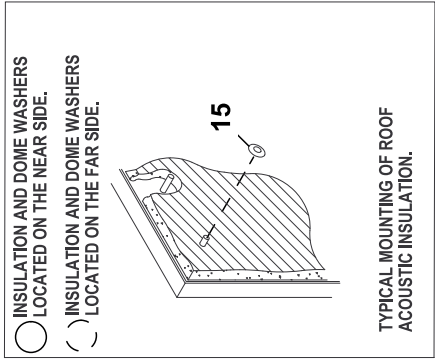


# GROUP F



**EXPLODED VIEW: EV ENCLOSURE C1 PVT LBL****DRAWING #: 0J2794****GROUP F****APPLICABLE TO:**

ITEM	PART#	QTY.	DESCRIPTION
(2)1	0J22150AL0R	1	ROOF C1 CPL PVT LBL
(2)2	0J14640AL0R	1	REAR INTAKE WRAP C1
(1)3	077992	10	NUT HEX LOCK M6-1.0 SS NY INS
(2)4	0J14630AL0R	2	DOOR LEFT/RIGHT SIDE C1
(2)5	0G33350AL0R	1	FRONT DISCHARGE WRAP 1.6L C1
6	0F4487A	1	ASSY ACCESS COVER
7	022127	1	NUT HEX 1/4-20 STEEL
8	022097	1	WASHER LOCK M6-1/4
9	022473	10	WASHER FLAT 1/4-M6 ZINC
(1)10	0C2454	8	SCREW THF M6-1 X 16 N WA Z/JS
11	0F5048D	2	WISE-ACTION LATCH, SLOTTED CIR
12	0F5049B	2	PULL TAB DOOR LOCK SS
13	0F8869D	1	KEY WISE-ACTION LATCH,SLOT CIR
14	089961	1	FOAM STRIP 3/4"WIDE X 3/16"THK (294"LG)
15	078115	8	WASHER SELF LOCKING DOME
16	0H7518	2	INSULATION SIDE DOOR C1
17	0H7518A	1	INSULATION ROOF C1
18	0H1208C	1	RF COVER PLATE-PLASTIC-DRK GRY
(1)19	0E3257	6	SCREW HWHTF M6-1.0 X 16
20	0912970090	2	ASSY WIRE 14AWG GRN/YEL (32.25"LG)
21	0H7518B	1	INSULATION REAR C1
22	022097	8	WASHER LOCK M6-1/4
23	0C8566	10	SCREW HHFC M6-1.0 X 20 G8.8
24	0H0412	10	NUT SPRINGCLIP M6-1.0
25	0J2791	2	BADGE, HONEYWELL
(3)26	084543A	2	SCREW PPPH M3 X 12
(3)27	052777	2	WASHER FLAT M3
(3)28	0G6019	1	ASSY ENCLOSURE GEN SIDE RF
(1)29	0A1658	2	WASHER LOCK SPECIAL 1/4"

(1)ENCLOSURE NOTE: ALL PANELS THAT FASTEN TO THE ROOF MUST BE SECURED USING I/N 10 (THREAD FORMING FASTENER) AND I/N 3 (LOCK NUT) AND TO INCLUDE AT LEAST ONE CONNECTION POINT USING I/N 19 (THREAD FORMING FASTENER) WITH I/N 3 (LOCK NUT) TO EACH PANEL. LOCK NUT IS TO BE INSTALLED AFTER THREAD FORMING FASTENER HAS PENETRATED THROUGH EXTRUSION IN ENCLOSURE PANELS. ALL PANEL TO BASEFRAME CONNECTIONS TO INCLUDE AT LEAST ONE CONNECTION POINT USING I/N 29 (WASHER SPECIAL).

(2) SHEET METAL PARTS LISTED IN THE BOM TABLE ARE REPRESENTING GENERIC PARTS (NO COLOR)

- MANUFACTURING: FOR CORRECT MATERIAL AND COLOR REFER TO AS400 BOM.
- CUSTOMER: WHEN ORDERING REPLACEMENT PARTS ENTER BASE NUMBER (FIRST 6 DIGITS ONLY) IN THE SYSTEM FOR CORRECT MATERIAL AND COLOR (FOR REFERENCE SEE GUIDELINE 0H7169).

(3) PART OF REMOTE WIRELESS.