

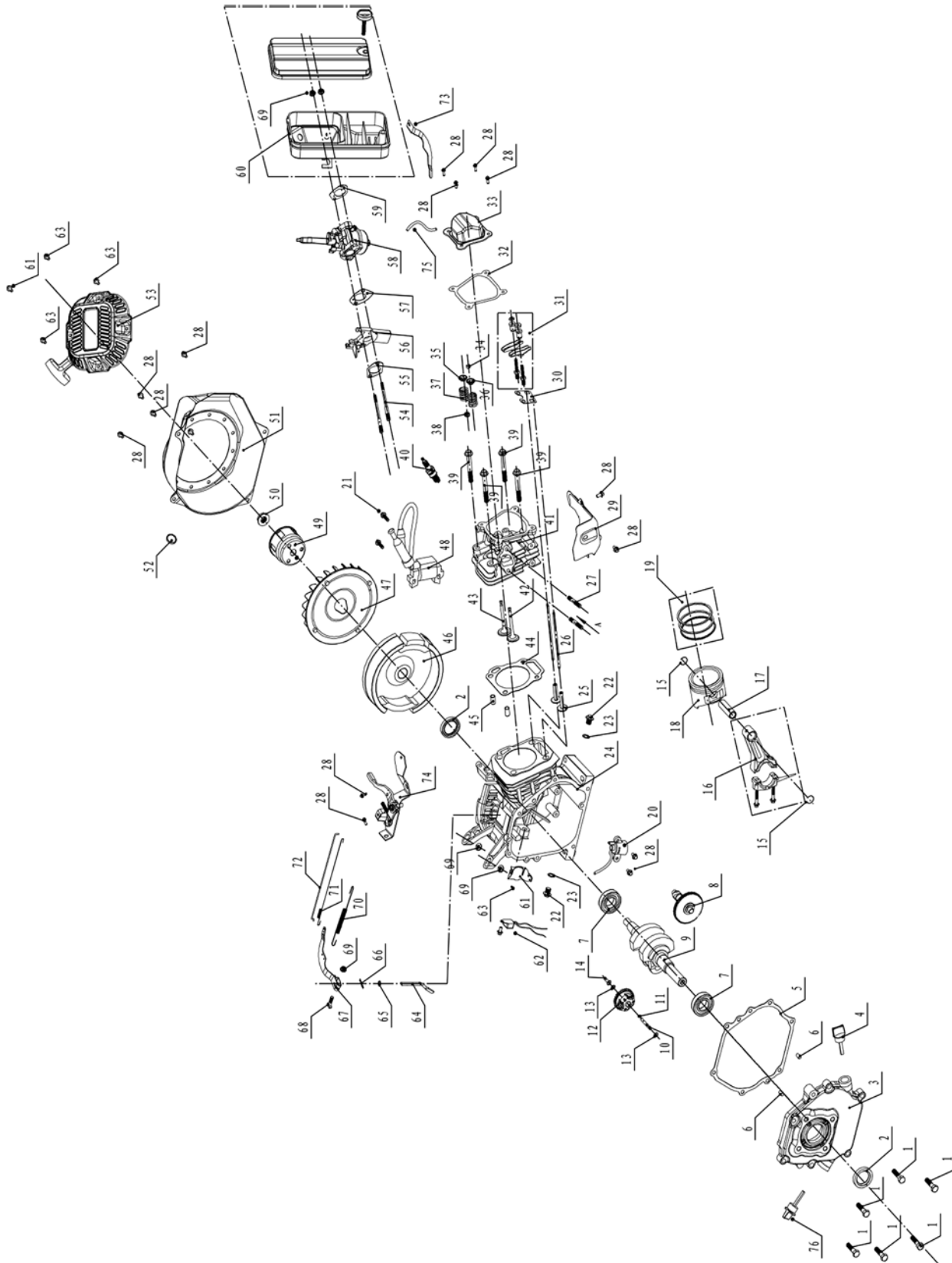


Engine Parts Manual

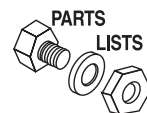
208cc (G24) EPA

NOTICE!

The information in this manual is known to be accurate as of the date of release shown on the cover. However, engineering changes can occur without notice. To obtain the proper parts, please be sure to use the serial number of the unit being serviced when ordering from this manual. Always refer to any parts notes and changes before ordering. All other parts not shown in this manual can be found on Generac's exploded view drawings online on GENservice at www.generac.com.

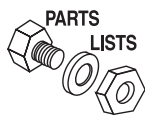


208cc Engine



ITEM	PART NO.	DESCRIPTION	QTY.
1	0H33750125	BOLT, M8 X 33.5	6
2	0H33750112	SEAL, OIL B2541	2
3	0K95520123	COVER, CRANKCASE	1
4	0H33750120	DIPSTICK, OIL	1
5	0H33750122	GASKET, CRANKCASE	1
6	0H33750124	PIN, 8X14	2
7	0K95520124	BEARING, 6205	2
8	0H33750154	SHAFT, CAM	1
9	0K95520110	CRANKSHAFT	1
10	0H33750117	SHAFT, REGULATING	1
11	0H33750118	RING, SNAP	1
12	0H33750279	GEAR, SPEED GOVERNING	1
13	0H33750280	WASHER, SPEED SWINGING ROD	2
14	0H33750281	SPOOL, GOVERNOR	1
15	0H33750149	CIRCLIP, PISTON PIN	2
16	0H33750152	ROD ASSY., CONNECTING	1
17	0H33750151	PIN, PISTON	1
18	0K95520125	PISTON	1
19	0K95520111	RING SET, PISTON	1
20	0H33750165	SENSOR, LOW OIL	1
21	0H33750167	BOLT, M6X22	3
22	0H33750110	BOLT, OIL DRAIN M10X15	2
23	0H33750111	WASHER, OIL DRAIN BOLT	2
24	0K95520112	CRANKCASE	1
25	0H33750142	TAPPET, VALVE	2
26	0H33750143	ROD, PUSH	2
27	0H33750136	STUD, EXHAUST, M8X34	2
28	0H33750126	BOLT, M6X12	16
29	0K95520113	SHROUD, COMPLETE	1
30	0H33750130	GUIDE, PUSH	1
31	0H33750129	ROCKER ASSY., VALVE	2
32	0H33750128	GASKET, CYLINDER HEAD COVER	1
33	0H33750127	COVER, CYLINDER HEAD	1
34	0H33750131	CAP	1

ITEM	PART NO.	DESCRIPTION	QTY.
35	0H33750133	SEAT, INTAKE SPRING	1
36	0H33750132	SEAT, EXHAUST SPRING	1
37	0H33750134	SPRING, VALVE	2
38	0H33750146	SEAL, OIL, PIPE	1
39	0H3375A123	BOLT, HEAD M8X60	4
40	0H33750169	PLUG, SPARK	1
41	0K95520114	HEAD, CYLINDER	1
42	0J08180132	VALVE, EXHAUST	1
43	0J08180133	VALVE, INTAKE	1
44	0J5628H111	GASKET, CYLINDER HEAD COVER	1
45	0H33750139	PIN, SET 10X16	2
46	0H33750155	FLYWHEEL	1
47	0H33750156	FAN, FLYWHEEL	1
48	0H33750168	COIL ASSY., IGNITION	1
49	0J9480A111	CUP, STARTING FLANGE	1
50	0H33750158	NUT, M14X1.5	1
51	0K95520115	HOUSING, BLOWER	1
52	0K95520116	CLIP, HOSE, ROV	1
53	0K95520117	START, RECOIL	1
54	0K95520118	STUD, INTAKE, M6X105	2
55	0H33750175	GASKET, INTAKE	1
56	0H33750176	BLOCK, CARB. CUSHION	1
57	0H33750177	GASKET, CUSHION BLOCK TO CARB	1
58	0K95520119	CARBURETOR	1
59	0H33750179	GASKET, CARB TO AIR CLEANER	1
60	0K68130110	CLEANER ASSY., AIR	1
61	0H33750163	SHROUD, COMPLETE	1
62	0H33750283	SWITCH ASSY., OIL LEVEL	1
63	0H3375A124	BOLT, M6X8	5
64	0H33750114	ARM, SHAFT GOVERNOR	1
65	0H33750115	WASHER	1
66	0H33750116	PIN, SPLIT	1
67	0H33750185	ARM, REGULATION	1



208cc Engine

ITEM	PART NO.	DESCRIPTION	QTY.
68	0H33750184	BOLT, LOCK	1
69	0H33750171	NUT, M6	3
70	0H33750181	SPRING, RETURN	1
71	0H33750182	SPRING, REGULATING	1
72	0H33750183	ROD, PULLING	1
73	0K95520120	BRACKET, AIR FILTER	1
74	0K95520121	REGULATOR ASSY.	1
75	0H33750172	TUBE, BREATHING	1
76	0K95520122	DIPSTICK, OIL (159C) ORANGE	1