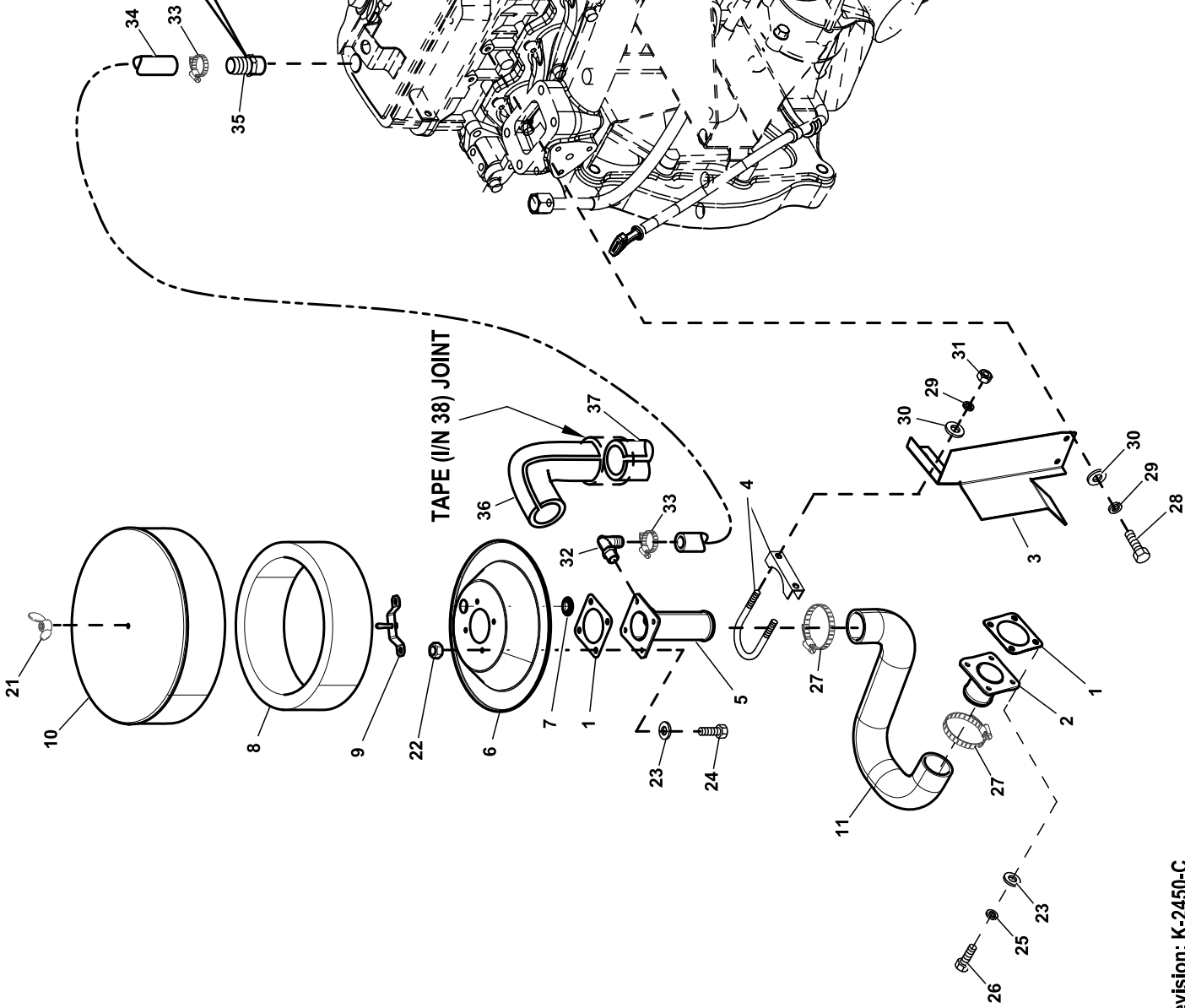
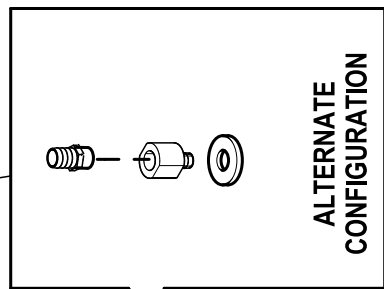


GROUP D

35 SEE NOTE (4)



EXPLODED VIEW: EV AIR CLEANER 2.4L G2 TURBO

DRAWING #: 0H1954

GROUP D

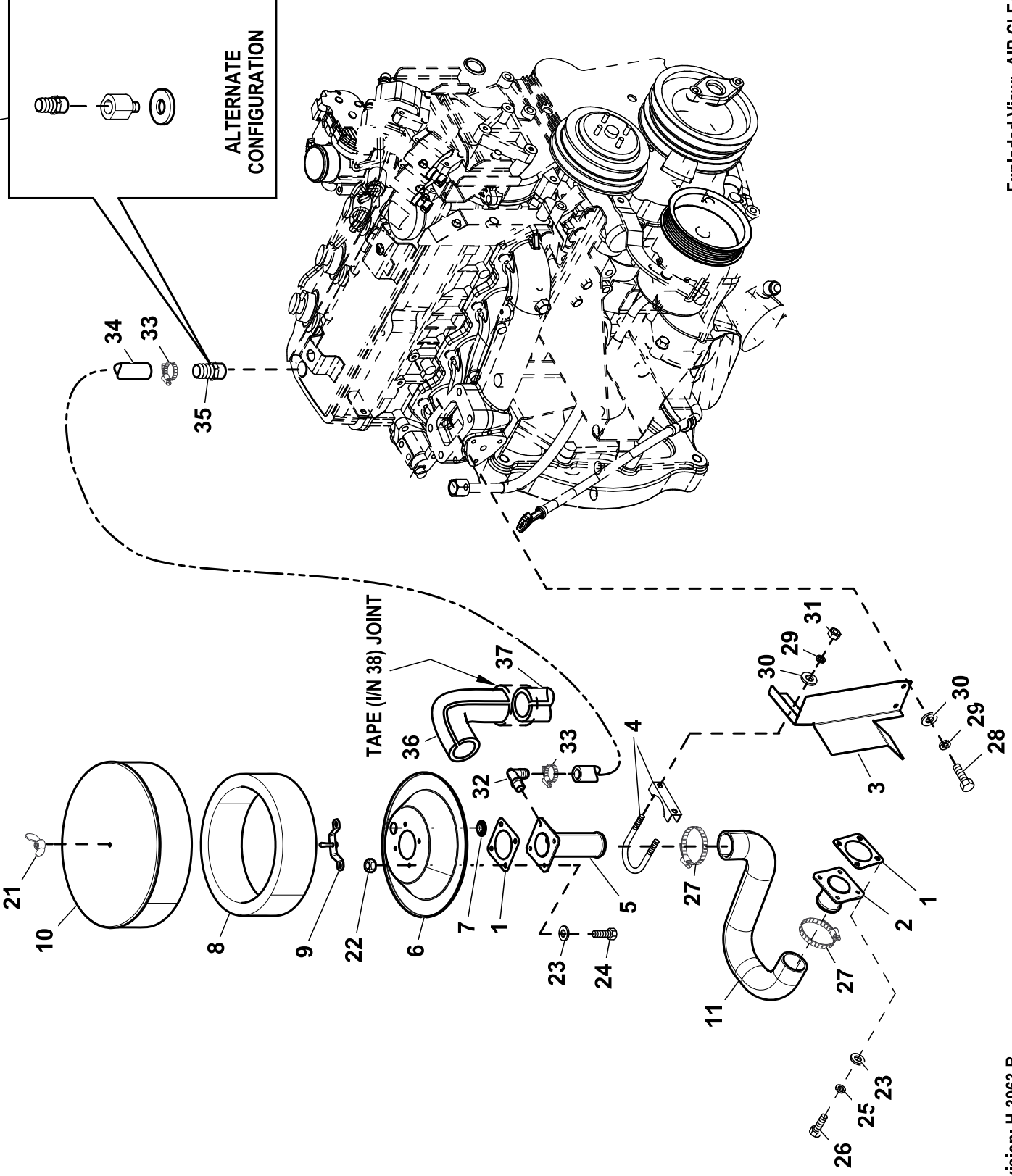
ITEM	PART#	QTY.	DESCRIPTION
1	0F4269	2	GASKET MIXER BODY
2	0H0030	1	ADAPTOR-MIXER
3	0G39340ST03	1	BRACKET AIR INTAKE
4	035480	1	BOLT U 5/16-18 X 2.06
5	0H0028	1	ADAPTOR-AIR CLEANER
6	0F4271	1	BASE PLATE, AIR CLEANER
7	0H0219	1	PLUG PLASTIC 2.5" BLACK
8	0F5418	1	ELEMENT AIR FILTER
9	0F4270	1	HOLD DOWN AIR CLEANER PLATED
10	0F6323	1	PLATE, AIR CLEANER TOP
11	0H0035	1	HOSE AIR INTAKE
12	0G0153	1	BARBED EL 90 1/2NPT X 3/4 HOSE
13	0D3700	4	NUT FLANGE M6-1.0 NYLOK
14	049811	8	WASHER, FLAT, M6
15	045757	4	SCREW HHC M6-1.0 X 25 G8.8
16	022097	4	WASHER LOCK M6-1/4
17	047411	4	SCREW HHC M6-1.0 X 16 C8.8
18	022145	2	WASHER FLAT 5/16-M8 ZINC
19	022129	2	WASHER LOCK M8-5/16
20	039253	2	SCREW HHC M8-1.25 X 20 G8.8
21	037561	1	NUT WING 1/4-20 W/NY INS ST ZN
22	0D3700	4	NUT FLANGE M6-1.0 NYLOK
23	049811	8	WASHER, FLAT, M6
24	045757	4	SCREW HHC M6-1.0 X 25 G8.8
25	022097	4	WASHER LOCK M6-1/4
26	047411	4	SCREW HHC M6-1.0 X 16 C8.8
27	086133C	2	CLAMP HI TORQUE 1.75 - 2.625
28	039253	2	SCREW HHC M8-1.25 X 20 G8.8
29	022129	4	WASHER LOCK M8-5/16
30	022145	4	WASHER FLAT 5/16-M8 ZINC
31	022259	2	NUT HEX 5/16-18 STEEL
32	0H1712	1	BARBED EL-90 POLY 1/2NPT X 3/4
33	057822	2	CLAMP HOSE #8 .53-1.00
34	059057	1	HOSE 3/4 ID SAE-30R2 (6"LG)
35	0H0027	1	FITTING VENT VALVE COVER 2.4L
	047527(3)(4)	1	BARBED STR 1/2NPT X 3/4
	0H1644(4)	1	FTG VNT VALVE COVER
	0G10080103(4)	1(REF)	GASKET, PCV VALVE
36(1)(2)	0H1787A	1	PIPE INSULATION ELBO
37(2)	0H1787	1	PIPE INSULATION (4.5"LG)
38(2)	0H1801	1	PIPE INSULATION TAPE (7"LG)

- (1)TRIM PIPE INSULATION ELBOW TO FIT.
- (2)INSULATION SHALL COMPLETELY COVER I/N'S 32, 34 & 35.
- (3)APPLY PIPE SEALANT COMPOUND TO THREADS.
- (4) ALTERNATE CONFIGURATION REQUIRES ALL NOTED PARTS.

NOTE: APPLY LOCTITE 620 BEARING RETAINMENT COMPOUND TO OUTSIDE SURFACE OF FITTING (I/N 35) THAT PRESSES INTO VALVE COVER.

GROUP D

35 SEE NOTE (4)



EXPLODED VIEW: AIR CLEANER 2.4L G2 TURBO

DRAWING #: 0H1954

GROUP D

APPLICABLE TO:

ITEM	PART#	QTY.	DESCRIPTION
1	0F4269	2	GASKET MIXER BODY
2	0H0030	1	ADAPTOR-MIXER
3	0G39340ST03	1	BRACKET AIR INTAKE
4	035480	1	BOLT U 5/16-18 X 2.06
5	0H0028	1	ADAPTOR-AIR CLEANER
6	0F4271	1	BASE PLATE, AIR CLEANER
7	0H0219	1	PLUG PLASTIC 2.5" BLACK
8	0F5418	1	ELEMENT AIR FILTER
9	0F4270	1	HOLD DOWN AIR CLEANER PLATED
10	0F6323	1	PLATE, AIR CLEANER TOP
11	0H0035	1	HOSE AIR INTAKE
12	0G0153	1	BARBED EL 90 1/2NPT X 3/4 HOSE
13	0D3700	4	NUT FLANGE M6-1.0 NYLOK
14	049811	8	WASHER, FLAT, M6
15	045757	4	SCREW HHC M6-1.0 X 25 G8.8
16	022097	4	WASHER LOCK M6-1/4
17	047411	4	SCREW HHC M6-1.0 X 16 C8.8
18	022145	2	WASHER FLAT 5/16-M8 ZINC
19	022129	2	WASHER LOCK M8-5/16
20	039253	2	SCREW HHC M8-1.25 X 20 G8.8
21	037561	1	NUT WING 1/4-20 W/NY INS ST ZN
22	0D3700	4	NUT FLANGE M6-1.0 NYLOK
23	049811	8	WASHER, FLAT, M6
24	045757	4	SCREW HHC M6-1.0 X 25 G8.8
25	022097	4	WASHER LOCK M6-1/4
26	047411	4	SCREW HHC M6-1.0 X 16 C8.8
27	086133C	2	CLAMP HI TORQUE 1.75 - 2.625
28	039253	2	SCREW HHC M8-1.25 X 20 G8.8
29	022129	4	WASHER LOCK M8-5/16
30	022145	4	WASHER FLAT 5/16-M8 ZINC
31	022259	2	NUT HEX 5/16-18 STEEL
32	0H1712	1	BARBED EL-90 POLY 1/2NPT X 3/4
33	057822	2	CLAMP HOSE #8 .53-1.00
34	059057	1	HOSE 3/4 ID SAE-30R2 (7.62"LG")
35	0H0027	1	FITTING VENT VALVE COVER 2.4L
	047527(3)(4)	1	BARBED STR 1/2NPT X 3/4
	0H1644(4)	1	FTG VNT VALVE COVER
	0G10080103(4)	1(REF)	GASKET, PCV VALVE
36(1)(2)	0H1787A	1	PIPE INSULATION ELBO
37(2)	0H1787	1	PIPE INSULATION (4.5"LG)
38(2)	0H1801	1	PIPE INSULATION TAPE (7"LG)

- (1)TRIM PIPE INSULATION ELBOW TO FIT.
- (2)INSULATION SHALL COMPLETELY COVER I/N'S 32, 34 & 35.
- (3)APPLY PIPE SEALANT COMPOUND TO THREADS.
- (4) ALTERNATE CONFIGURATION REQUIRES ALL NOTED PARTS.

NOTE: APPLY LOCTITE 620 BEARING RETAINMENT COMPOUND TO OUTSIDE SURFACE OF FITTING (I/N 35) THAT PRESSES INTO VALVE COVER.