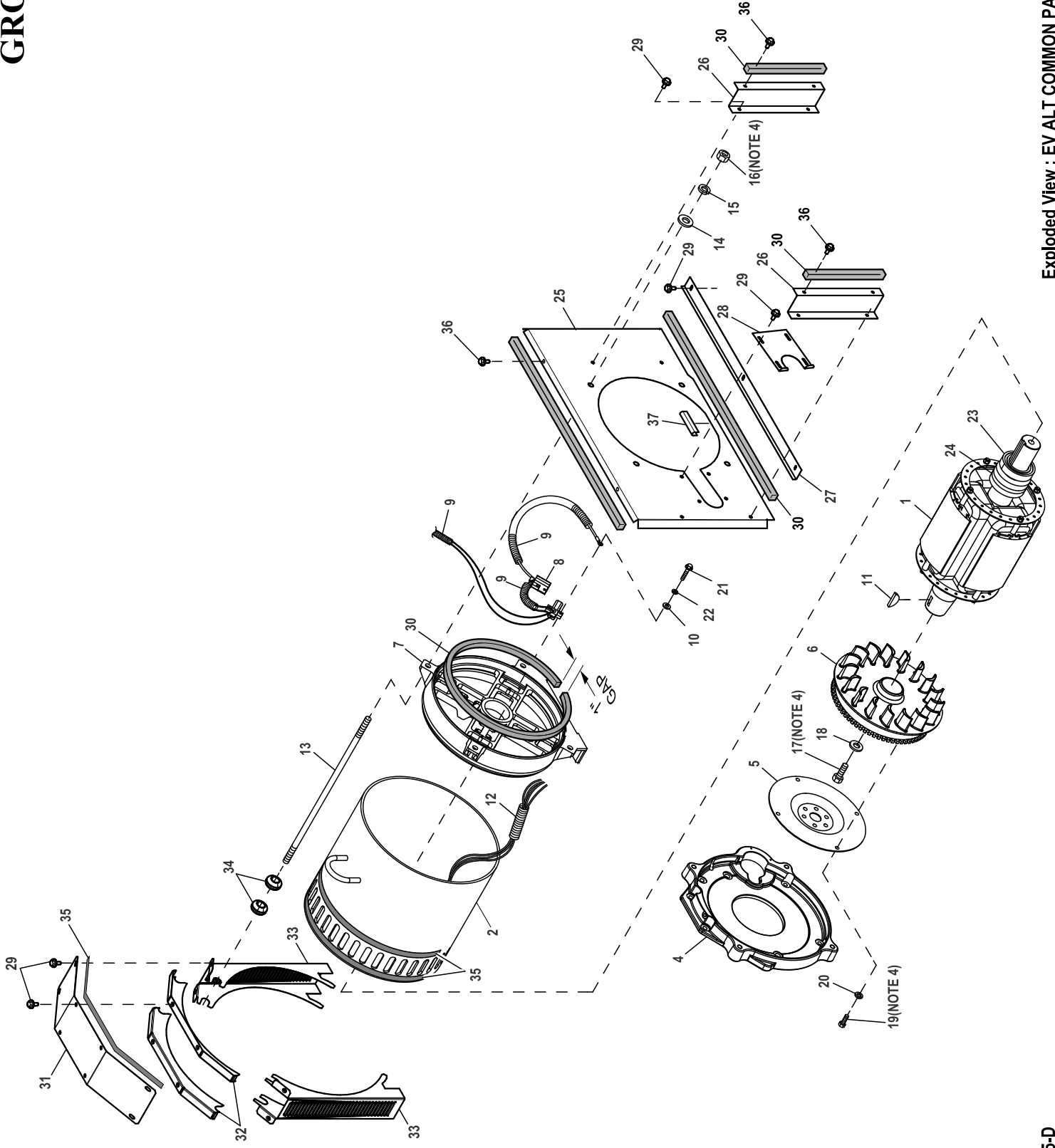


# GROUP A



**EXPLODED VIEW: EV ALTCOMPRT DIRECT B-CAN**

**DRAWING #: 0J5599A**

**GROUP A**

ITEM	PART#	QTY.	DESCRIPTION
1	0G1931	1	ROTOR 25KW 3PH DIRECT 390 1800
	0G2101	1	ROTOR 25KW 1PH DIRECT 390 1800
	0G6568	1	RTR 390 45AD1 CPL
	0G6570	1	RTR 390 45KD1 CPL
2	0G1932	1	ASSY STR 390 25 GD1 CPL
	0G2098	1	ASSY STR 390 25AD1 CPL
	0G2099	1	ASSY STR 390 25KD1 CPL
	0G2100	1	ASSY STR 390 25JD1 CPL
	0G6365	1	STR 390 45JD1 CPL
	0G6569	1	STR 390 45AD1 CPL
	0G6571	1	STR 390 45GD1 CPL
	0G6572	1	STR 390 45KD1 CPL
	0H1299	1	ASSY STR 390 36AD1 CPL
	0H1300	1	ASSY STR 390 36JD1 CPL
	0H1301	1	ASSY STR 390 36 GD1 CPL
	0J5243	1	STR 390 48GD1 CPL
	0J5427	1	STR 390 48AD1 CPL
	0J6268	1	STR 390 48JD1 CPL
	0J6269	1	STR 390 48KD1 CPL
3	0C9708	REF	INSTR HYPOT TEST (NOT SHOWN)
4	SEE ENGINE EV	REF	ENGINE ADAPTER
5	SEE ENGINE EV	REF	FLEXPLATE
6	0F5767B	1	ASSY FLYWHEEL CPL W/40MM FAN B
7	0E5706	1	REAR BEARING CARRIER 390/DRCT
8	0F7874	1	ASSY BRUSH HOLDER 390/HSB
	0F7874A	1	ASSY BRUSH HOLDER 390/HSB
	(6) 0J7347	1	ASSY BRUSH HOLDER 390/HSB
	(6) 0J7347A	1	ASSY BRUSH HOLDER 390/HSB
9	077043A	1	CONDUIT FLEX .38" ID (60")
10	038150	4	WASHER FLAT #8 ZINC
11	023454	1	KEY WOODRUFF #E
12	077043F	1	CONDUIT FLEX 1.25"ID (35" LG)
13	04576100BU	4	STUD M14-2.0 570 G5 ZINC
	(5) 04576100BF	4	STUD M14-2.0 X 540 G5 ZINC
14	052646	4	WASHER FLAT M14
15	043123	4	WASHER LOCK M14
16	051779	4	NUT HEX M14-2.0 G8 YEL CHR
(2) 17	0A2601	1	SCREW HHC M16-2.0 X 45 G8.8
18	072879	1	SPACER .69 X 2.75 X .37 ST/ZNC
(2) 19	059980	4	SCREW HHC M10-1.5 X 25 C10.9
20	046526	4	WASHER LOCK M10
21	0C3993	4	SCREW HHTT M4-0.7 X 25 BP
22	022264	4	WASHER LOCK #8-M4
(1) 23	047248	1	BALL BEARING-45 MM
(1) 24	070892	1	SLIP RING MACHINED
(3) 25	0J7077	1	BLOCK OFF, ALTERNATOR AIR
	(6)(7) 0J7348	1	BLOCK OFF, ALTERNATOR AIR QTA
(3) 26	0J7077A	2	BLOCK OFF, ALT AIR LH/RH
(3) 27	0J7007	1	BAFFLE-ALT INLET
(3) 28	0J7086	1	PLATE LEAD CLAMP
(3) 29	0C2454	19	SCREW HWHT M6-1 X 16 N WA Z/JS
(3) 30	052250	1	TAPE FOAM 1X1 (166" LG)

**EXPLODED VIEW: EV ALTCOMPRT DIRECT B-CAN**

**DRAWING #: 0J5599A**

**GROUP A**

<b>ITEM</b>	<b>PART#</b>	<b>QTY.</b>	<b>DESCRIPTION</b>
(8)31	0J81840ST0R	1	SCROLL TOP 390 ALT CPL
(8)32	0J8184AST0R	2	SCROLL FT/RR 390 ALT CPL
(8)33	0J8184BST0R	2	SCROLL LH/RH 390 ALT CPL
34	089685	4	GROMMET .75 X .12 X .50
35	089961A	1	FOAM STRIP 3/4"WIDE X 1/4"THK (120"LG)
36	0C2266	6	SCREW PHTT M5-0.8 X 16 ZP
(7)37	056326	1	TRIM VINYL BLACK 1/8GP (10" LG)

NOTES (UNLESS OTHERWISE SPECIFIED :

- (1) ROTOR REPLACEMENT PARTS.
- (2) APPLY MEDIUM STRENGTH BLUE THREAD LOCKING FLUID TO THREADS.
- (3) NOT USED IN OPEN SETS.
- (4) TORQUE VALUES: (FOR REFERENCE ONLY)
  - ITEM #16 - 45 ft-lbs.
  - ITEM #17 - 144 ft-lbs.
  - ITEM #19 - 56 ft-lbs.
- (5) 5.4L ONLY
- (6) QTA ONLY
- (7) 60KW ONLY
- (8) SHEET METAL PARTS LISTED IN THE BOM TABLE ARE REPRESENTING GENERIC PARTS (NO COLOR)
  - MANUFACTURING: FOR CORRECT MATERIAL AND COLOR REFER TO AS400 BOM.
  - CUSTOMER: WHEN ORDERING REPLACEMENT PARTS ENTER BASE NUMBER (FIRST 6 DIGITS ONLY) IN THE SYSTEM FOR CORRECT MATERIAL AND COLOR (FOR REFERENCE SEE GUIDELINE 0H7169).

**EXPLODED VIEW: EV ALTCOMPRT DIRECT B-CAN**

**DRAWING #: 0J5599A**

**GROUP A**

---

<b>ITEM</b>	<b>PART#</b>	<b>QTY.</b>	<b>DESCRIPTION</b>
-------------	--------------	-------------	--------------------

---

This page left blank intentionally