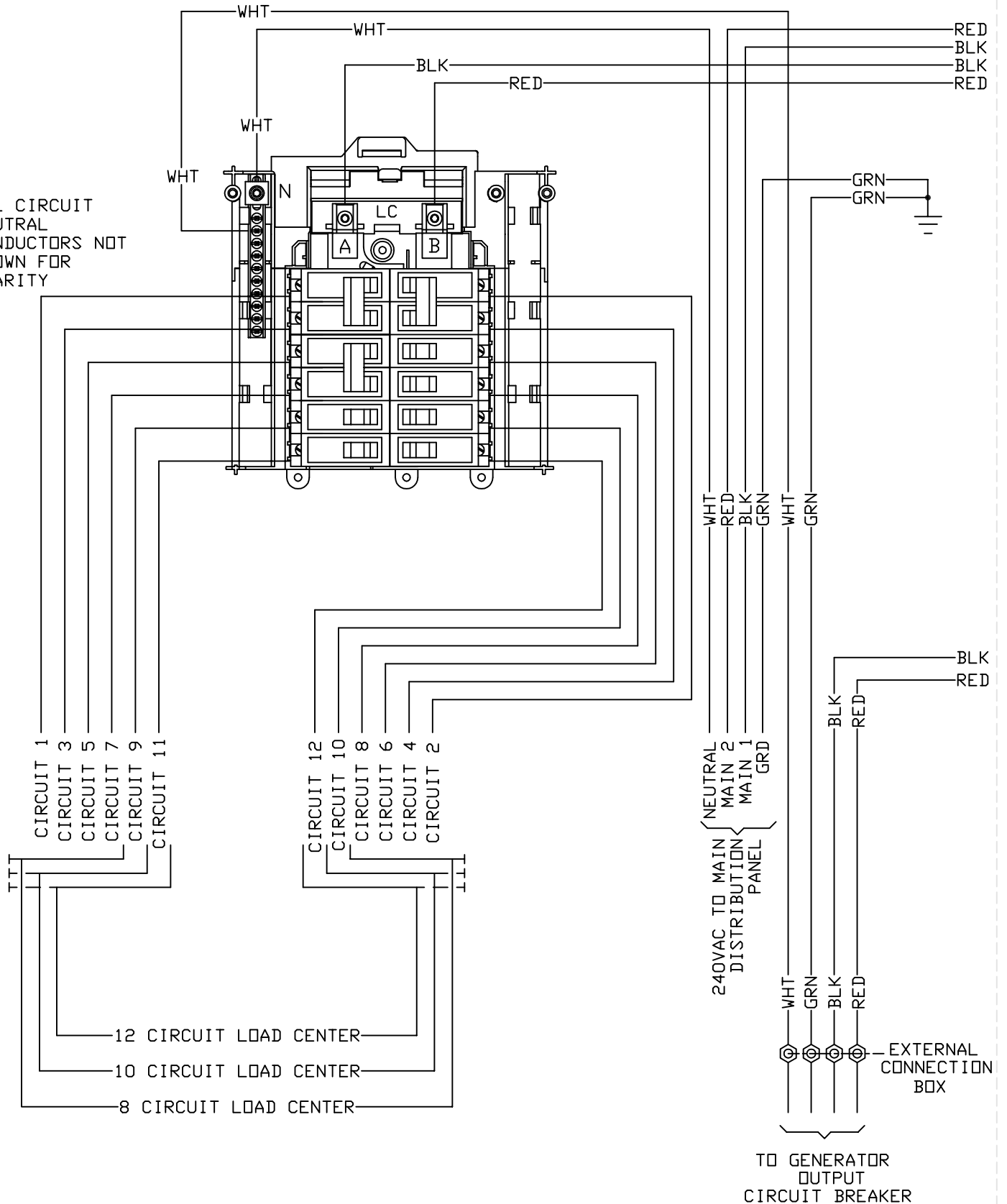
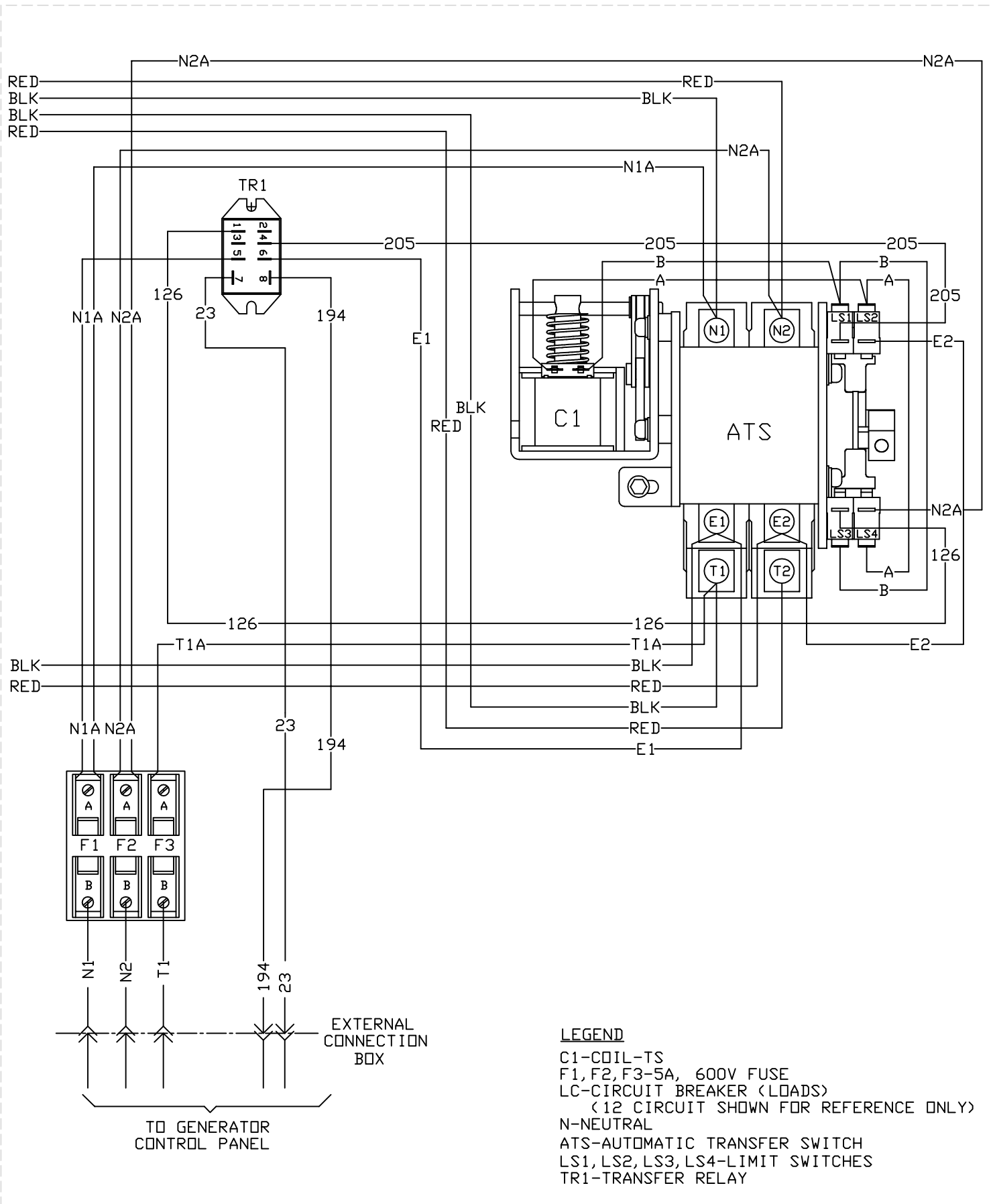


GROUP G

ALL CIRCUIT
NEUTRAL
CONDUCTORS NOT
SHOWN FOR
CLARITY



GROUP G



LEGEND
 C1-COIL-TS
 F1,F2,F3-5A, 600V FUSE
 LC-CIRCUIT BREAKER (LOADS)
 (12 CIRCUIT SHOWN FOR REFERENCE ONLY)
 N-NEUTRAL
 ATS-AUTOMATIC TRANSFER SWITCH
 LS1,LS2,LS3,LS4-LIMIT SWITCHES
 TR1-TRANSFER RELAY