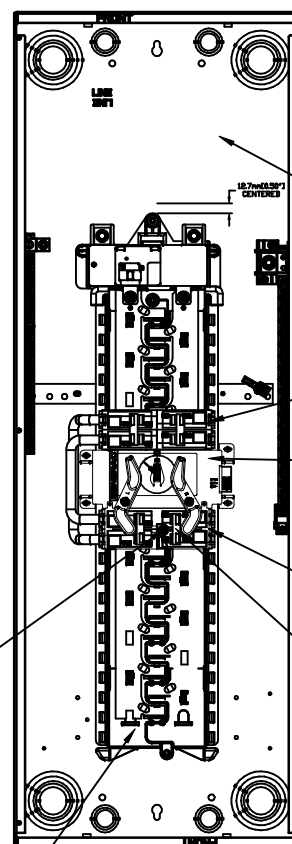
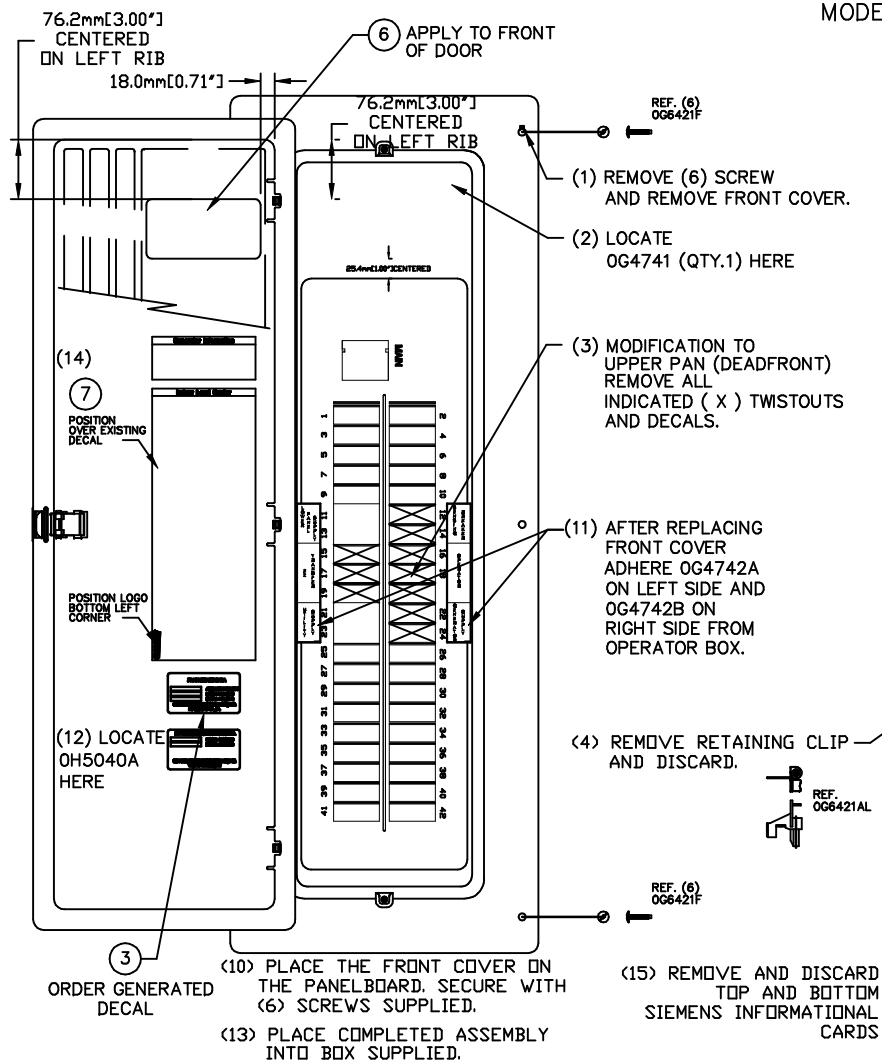


## GROUP B

REF. GEN READY MULTI-BREAKER PANELBOARD/OPERATOR NEMA 1  
MODEL # 05449-2



### TORQUE SPECIFICATIONS

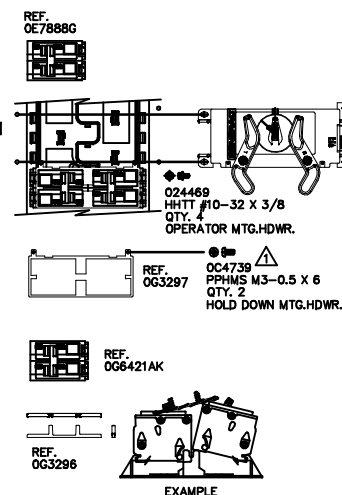
- ① TORQUE TO 20 LB-IN. MIN.  
 ② TORQUE TO 24-30 LB-IN. MIN.  
 ③ TORQUE TO 45-50 LB-IN. MIN.

NOTE:

\* PLACE ALL LOOSE ITEMS REMAINING WITH THE OPERATOR AND THE LOAD CENTER:

1. INSTALLATION INSTRUCTION  
2. 5 AMP FUSE ASSEMBLY  
3. FUSE DECAL  
4. SIEMENS LOAD CENTER BREAKER DECAL AND INSTRUCTION.  
INTO A PLASTIC BAG AND PLACE INSIDE LOAD CENTER DOOR.

**\*\* FOR PRODUCTION TESTING ONLY. (DO NOT SHIP WITH UNIT)**



**EXPLODED VIEW:  
EV GENREADY MULTI-BKR LC PB W/OPR NEMA 1  
DRAWING #: 0J1497A**

EXPLODED VIEW:EV GENREADY MULTI-BKR LC PB W/OPR NEMA 1  
DRAWING #: 0J1497A

GROUP B

APPLICABLE TO:

ITEM	PART #	QTY.	DESCRIPTION
1	0G6420	1	EZ TRANSFER OPERATOR
2	0G6421	1	GEN READY MULTI-BKR PB NEMA 1
3	0G6215B	1	DECAL, GEN READY LC SERIAL NUMBER
4	044075	1	BAG ZIP 10 X 12 2MIL
5	0G4745	1	PRODUCTION TEST PROCEDURE
6	0H5371	1	DECAL BRAND GENREADY
7	0J0777	1	DECAL GEN-READY MULTI-BKR