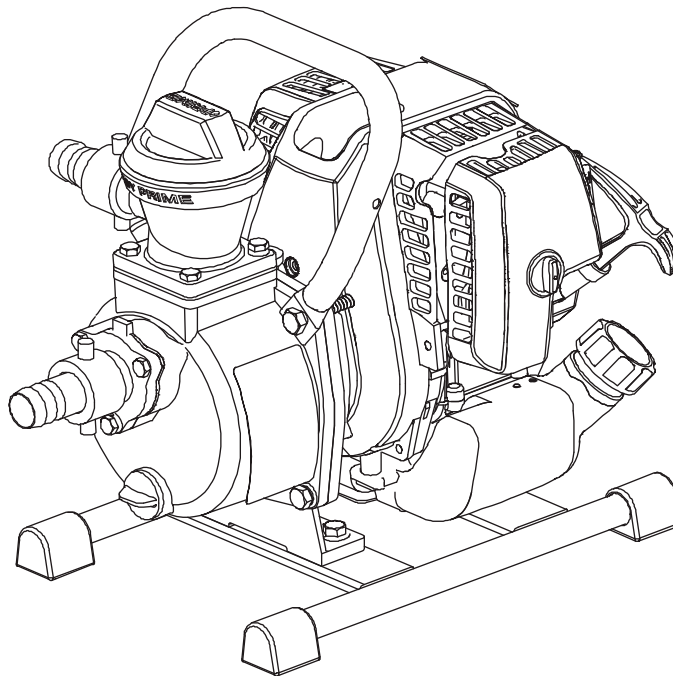


CW10K Water Pump (G24)

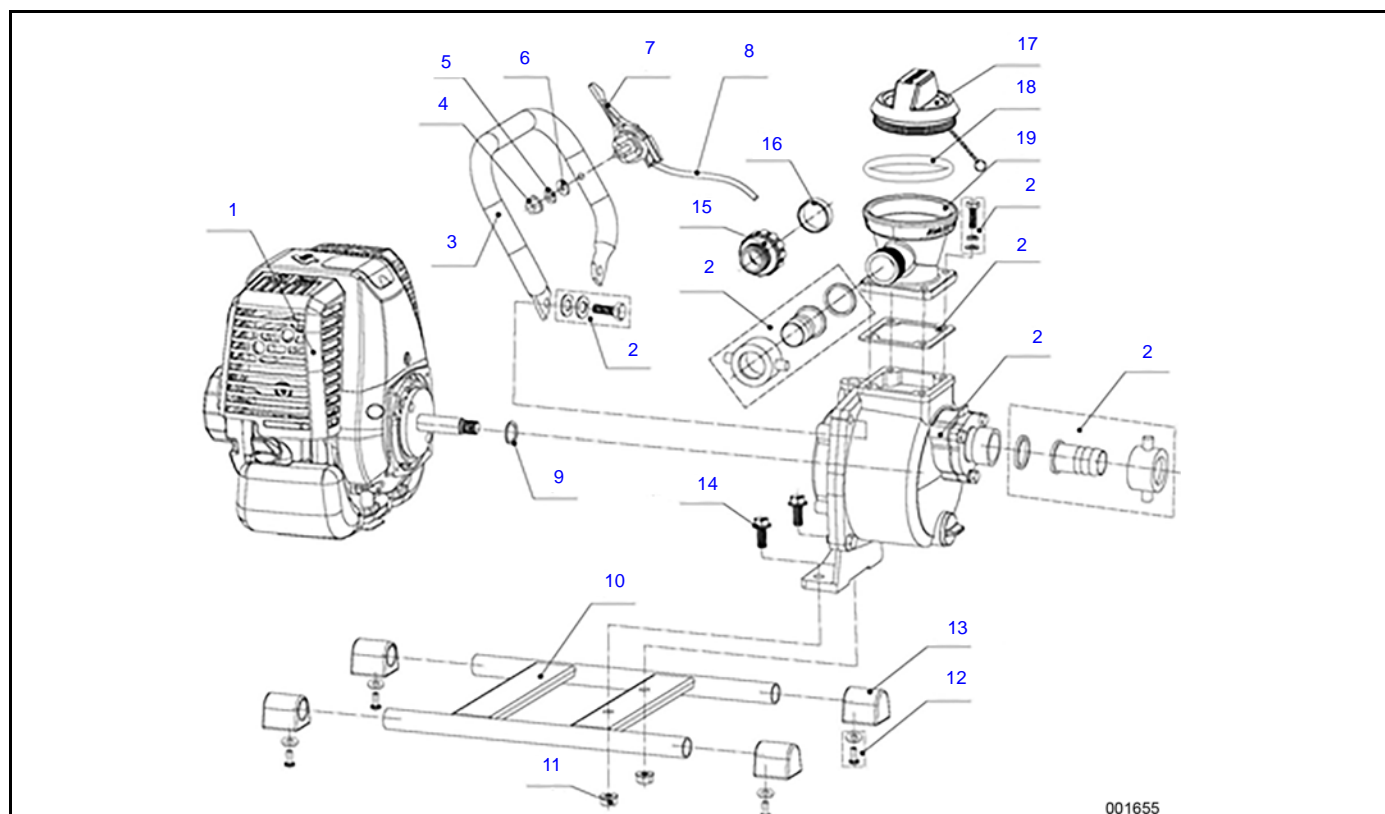
1 Inch Dewatering Pump



NOTICE!

The information in this manual is known to be accurate as of the date of release shown on the cover. However, engineering changes can occur without notice. To obtain the proper parts, please be sure to use the serial number of the unit being serviced when ordering from this manual. Always refer to any parts notes and changes before ordering. All other parts not shown in this manual can be found on Generac's exploded view drawings online on GENservice at www.generac.com.

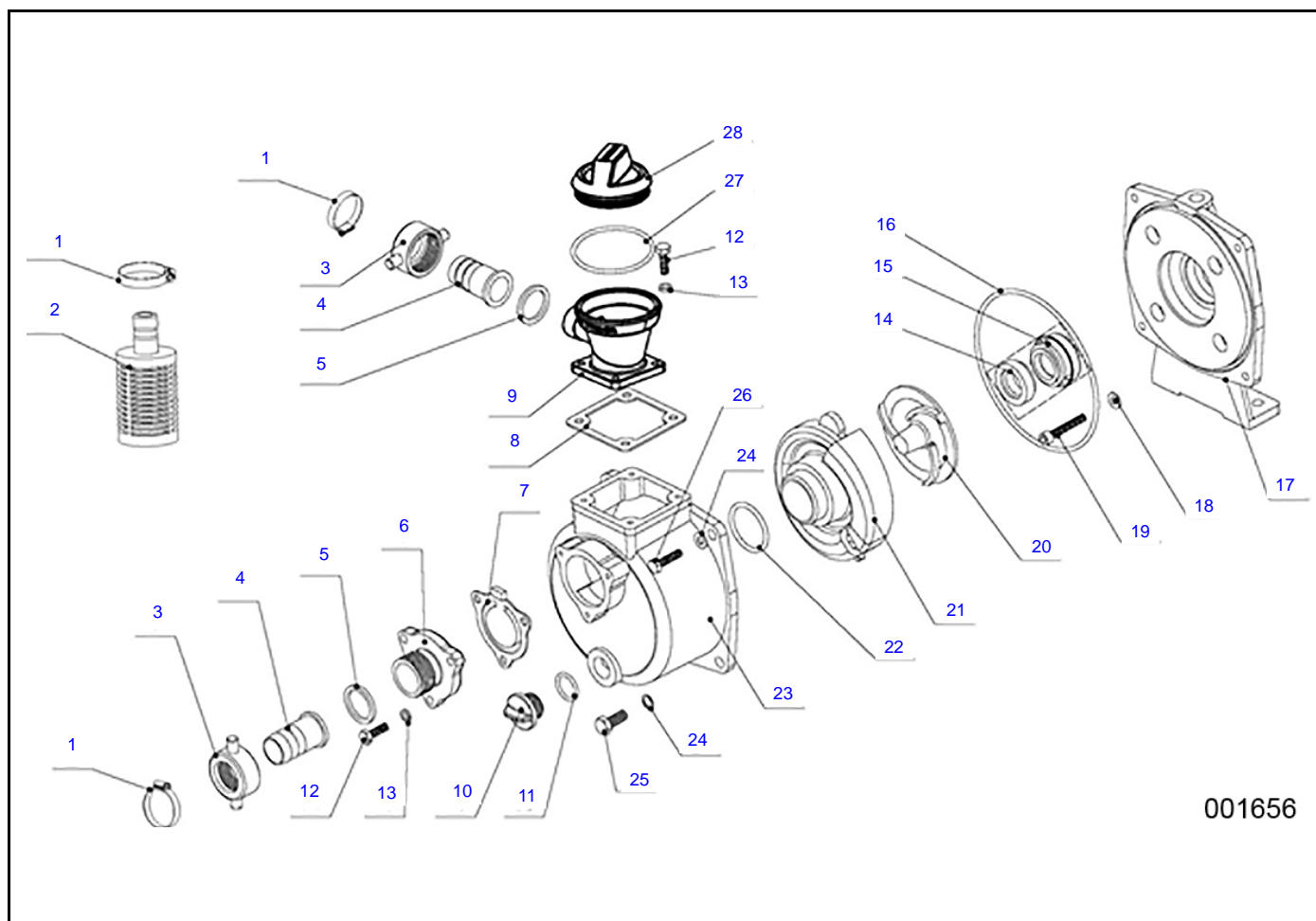
CW10K WATER PUMP



001655

ITEM	PART NO.	DESCRIPTION	QTY
1	0L4799	33.5cc ENGINE FOR 1 INCH WATER PUMP	1
2	0L63340110	WATER PUMP ASSEMBLY (SEE ASSEMBLY FOR ITEM 2, PART NUMBERS)	1
	NOTE	ITEMS 17,18, AND 19 ARE NOT INCLUDED WITH ABOVE ASSEMBLY	
3	0L63340111	HANDLE	1
4	0L63340112	NUT (M5)	1
5	0J08180238	SPRING WASHER	1
6	0J08180237	FLAT WASHER	1
7	0L63340113	THROTTLE LEVER	1
8	0L63340114	THROTTLE CABLE	1
9	0L63340115	ADJUSTING SHIM	5
10	0L63340116	BASE FOR 1 INCH WATER PUMP	1
11	0J08180243	NUT (M8)	2
12	0J08180250	SELF TAPPING SCREW (ST4.2X12)	4
13	0L63340117	VIBRATION MOUNT	4
14	0L63340118	BOLT (M8X25)	2
15	0L4775	FNPT ADAPTOR	1
16	0L63340119	BLUE BAND FOR 1 INCH WATER PUMP	1
17	0K9052	1/1.5 CAP EASY PRIME DISCHARGE FUNNEL	1
18	0K96270133	O-RING FOR 1/1.5 INCH CAP	1
19	0L4763	DISCHARGE FUNNEL FOR 1 INCH WATER PUMP	1

WATER PUMP ASSEMBLY



ITEM	PART NO.	DESCRIPTION	QTY
1	0L63340120	CLAMP	3
2	0L63340121	STRAINER FOR 1 INCH WATER PUMP	1
3	0L63340122	JOINT GRIP II	2
4	0L63340123	HOSE BARB II	2
5	0L63340124	SEALING RING	2
6	0L63340125	INTAKE VALVE SEAT FOR 1 INCH WATER PUMP	1
7	0L63340126	FLAP VALVE FOR 1 INCH WATER PUMP	1
8	0L63340127	DISCHARGE FUNNEL GASKET	1
9	0L4763	DISCHARGE FUNNEL FOR 1 INCH WATER PUMP	1
10	0L63340128	PLUG	1
11	0L63340129	PLUG O-RING	1
12	0L63340130	BOLT (M6X20)	7
13	0L47990195	SPRING WASHER	7
14	0L63340131	MECHANICAL SEAL (DYNAMIC)	1
15	0L63340132	MECHANICAL SEAL (STATIONARY)	1
16	0L63340133	PUMP COVER O-RING	1

17	0L63340134	PUMP COVER	1
18	0L63340135	ALUMINUM WASHER	4
19	0L63340136	INNER HEX BOLT (M6X40)	4
20	0L63340137	IMPELLER FOR 1 INCH PUMP	1
21	0L63340138	VOLUTE FOR 1 INCH PUMP	1
22	0L63340139	VOLUTE SEALING O-RING	1
23	0L63340140	PUMP HOUSING	1
24	0L63340141	SPRING WASHER	4
25	0L63340142	BOLT (M8X20)	2
26	0L63340143	BOLT (M8X25)	2
27	0K96270133	O RING FOR 1/1.5 INCH EASY PRIME CAP	1
28	0K9052	CAP FOR 1/1.5 INCH EASY PRIME FUNNEL	1



Part No.0L6334PMNL Rev. A 12/22/2015 Printed in USA
 © Generac Power Systems, Inc. All rights reserved
 Specifications are subject to change without notice.
 No reproduction allowed in any form without prior written
 consent from Generac Power Systems, Inc.

Generac Power Systems, Inc.
 S45 W29290 Hwy. 59
 Waukesha, WI 53189
 1-888-GENERAC (1-888-436-3722)
generac.com