

GROUP C

TORQUE SPECIFICATIONS

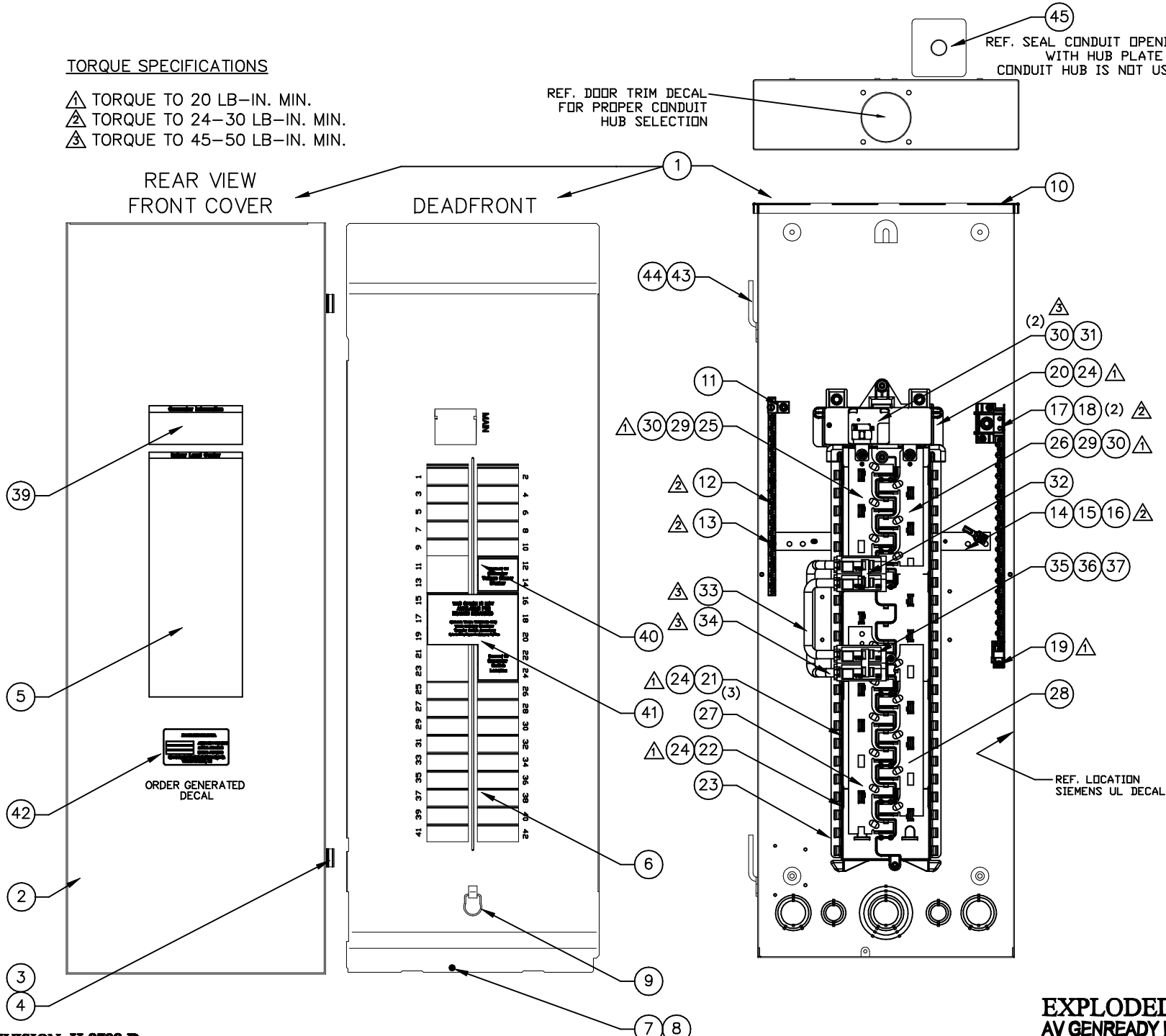
- ▲ TORQUE TO 20 LB-IN. MIN.
- ▲ TORQUE TO 24-30 LB-IN. MIN.
- ▲ TORQUE TO 45-50 LB-IN. MIN.

REF. DOOR TRIM DECAL
FOR PROPER CONDUIT
HUB SELECTION

45
REF. SEAL CONDUIT OPENING
WITH HUB PLATE IF
CONDUIT HUB IS NOT USED

REAR VIEW
FRONT COVER

DEADFRONT



REVISION: H-8798-D
DATE: 04/19/11

EXPLODED VIEW:
AV GENREADY LOAD CTR PANELBD 3R
DRAWING #: 0H4975AV

EXPLODED VIEW:AV GENREADY LOAD CTR PANELBD 3R

DRAWING #: 0H4975AV

GROUP C

APPLICABLE TO:

ITEM	PART #	QTY.	DESCRIPTION
1	0H4975	1	GENREADY LC NEMA 3R 42 CIRCUIT ,200A SW.
2	0H4975A	1	DOOR TRIM ,42"
3	0H4975B	2	DOOR TRIM HINGE - FEMALE
4	0H4975C	4	RIVET, DOOR TRIM, HINGE
5	0H4975D	1	DOOR TRIM, DECAL
6	0H4975E	1	UPPER PAN, 42" ENCL. NEMA 3R
7	0H4975F	1	SCREW, #10-32 (DEADFRONT)
8	0H4975G	1	WASHER - RETAINING
9	0H4975H	1	COVER PULL (DEADFRONT)
10	0H4975J	1	BOX ASSY, OUTDOOR L/C 42"
11	0G6421K	1	GROUND BAR W 2/0 LUG, 32 SCREWS
12	0G6421L	1	SCREW- #10-32 X .88 SHWHSTT
13	0G6421M	1	SCREW- #10-32 X 1.00 SHWHST T
14	0G6421N	1	NEUTRAL TIE STRIP
15	0G6421P	1	BOND-STRAP
16	0G6421Q	1	SCREW- #10-32 X .375 SHWHST T
17	0G6421R	1	INSULATED NEUTRAL 41 SCREWS
18	0G6421S	1	SCREW- #10-32 X 7/16 SPPH TAPTIT E
19	0G6421T	1	SCREW- #10-32 X .75 CRPHHT
20	0G6421U	2	BASE PAN UPPER MODULE
21	0G6421V	1	BASE PAN MID MODULE (6 POS)
22	0G6421W	1	BASE PAN LOWER MODULE 8 CIR (4 POS)
23	0G6421X	1	BRIDGE MURRAY LOAD CENTER (METAL)
24	0G6421Y	3	SCREW HHTT #10-32 X .562 HHWTT
25	0G6421Z	1	BUSBAR 100-150A CU LH
26	0G6421AA	1	BUSBAR 100-150A CU RH
27	0G6421AB	3	BUSBAR 200A CU LH
28	0G6421AC	1	BUSBAR 200A CU RH
29	0G6421AD	1	STUD, PRESS 1/4-20 X 5/8
30	0G6421AE	1	HEX CONICAL SEMS NUT (1/4-20)
31	0G6421AF	1	CIRCUIT BKR 200A 2P 120/240V 22KA MAIN
32	0F7888H	2	CIRCUIT BKR 125A 2-POLE (SIEMENS)
33	0G6421AH	2	WIREFORM, 1/0 CU UPPER BRDG WIRE (SM)
34	0G6421AJ	1	WIREFORM, 1/0 CU LOWER BRDG WIRE (LG)
35	0G6421AK	1	SWITCH, 125A 2-POLE MOLDED CASE
36	0G6421AL	1	RETAINER CLIP MAIN BREAKER
37	0G6421AM	1	SCREW, #6 X .19 ROUND HEAD
38	0G6421AN	1	CARTON 42"
39	0G6421AP	1	GENERATOR INFORMATION, DECAL
40	0G6421AQ	1	VOLTAGE SENSING CB, DECAL
41	0G6421AR	1	GEN READY ACCESSORY, DECAL
42	0G6215C	1	DECAL, GENREADY LC SERIAL # NEMA 3R
43	0H4975K	1	BOX ASSY. HINGE - MALE
44	0H4975L	1	SCREW - #10-32
45	0J0877	1	COVER CONDUIT HUB NEMA 3R