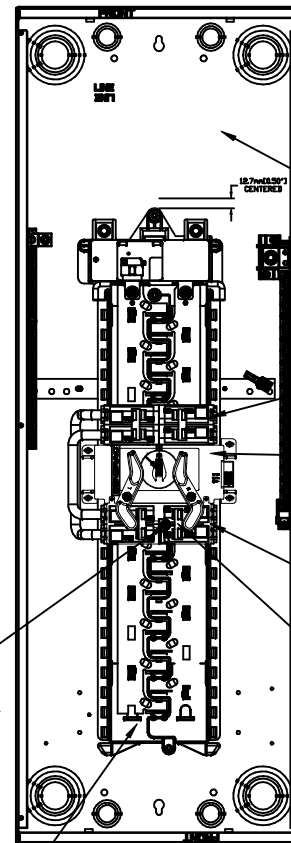
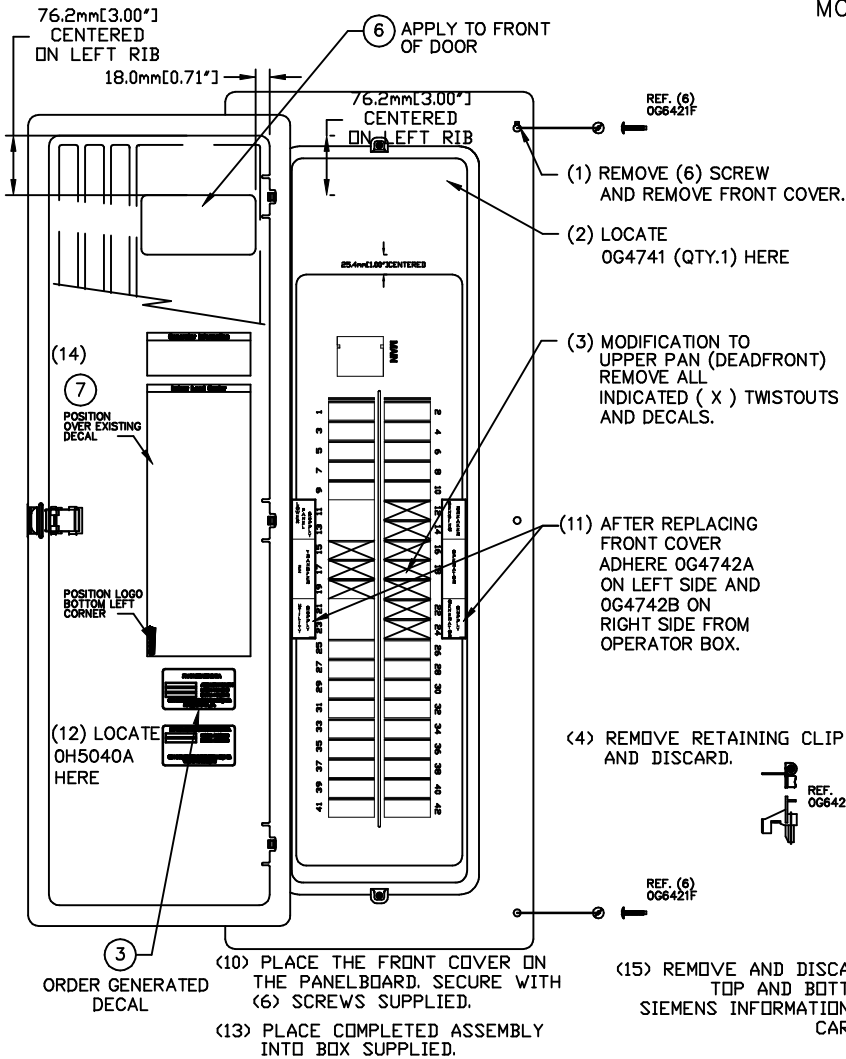


# GROUP B

## REF. GEN READY MULTI-BREAKER PANELBOARD/OPERATOR NEMA 1 MODEL # 05449-2

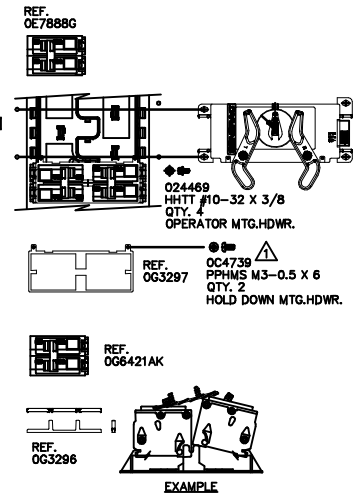


### TORQUE SPECIFICATIONS

- △ TORQUE TO 20 LB-IN. MIN.
- △ TORQUE TO 24-30 LB-IN. MIN.
- △ TORQUE TO 45-50 LB-IN. MIN.

### NOTE:

- \* PLACE ALL LOOSE ITEMS REMAINING WITH THE OPERATOR AND THE LOAD CENTER:
  - 1. INSTALLATION INSTRUCTION
  - 2. 5 AMP FUSE ASSEMBLY
  - 3. FUSE DECAL
  - 4. SIEMENS LOAD CENTER BREAKER DECAL AND INSTRUCTION.
- INTO A PLASTIC BAG AND PLACE INSIDE LOAD CENTER DOOR.
- \*\* FOR PRODUCTION TESTING ONLY. (DO NOT SHIP WITH UNIT)



**EXPLODED VIEW:EV GENREADY MULTI-BKR LC PB W/OPR NEMA 1  
DRAWING #: 0J1497A**

**GROUP B**

**APPLICABLE TO:**

<b>ITEM</b>	<b>PART #</b>	<b>QTY.</b>	<b>DESCRIPTION</b>
1	0G6420	1	EZ TRANSFER OPERATOR
2	0G6421	1	GEN READY MULTI-BKR PB NEMA 1
3	0G6215B	1	DECAL, GEN READY LC SERIAL NUMBER
4	044075	1	BAG ZIP 10 X 12 2MIL
5	0G4745	1	PRODUCTION TEST PROCEDURE
6	0H5371	1	DECAL BRAND GENREADY
7	0J0777	1	DECAL GEN-READY MULTI-BKR