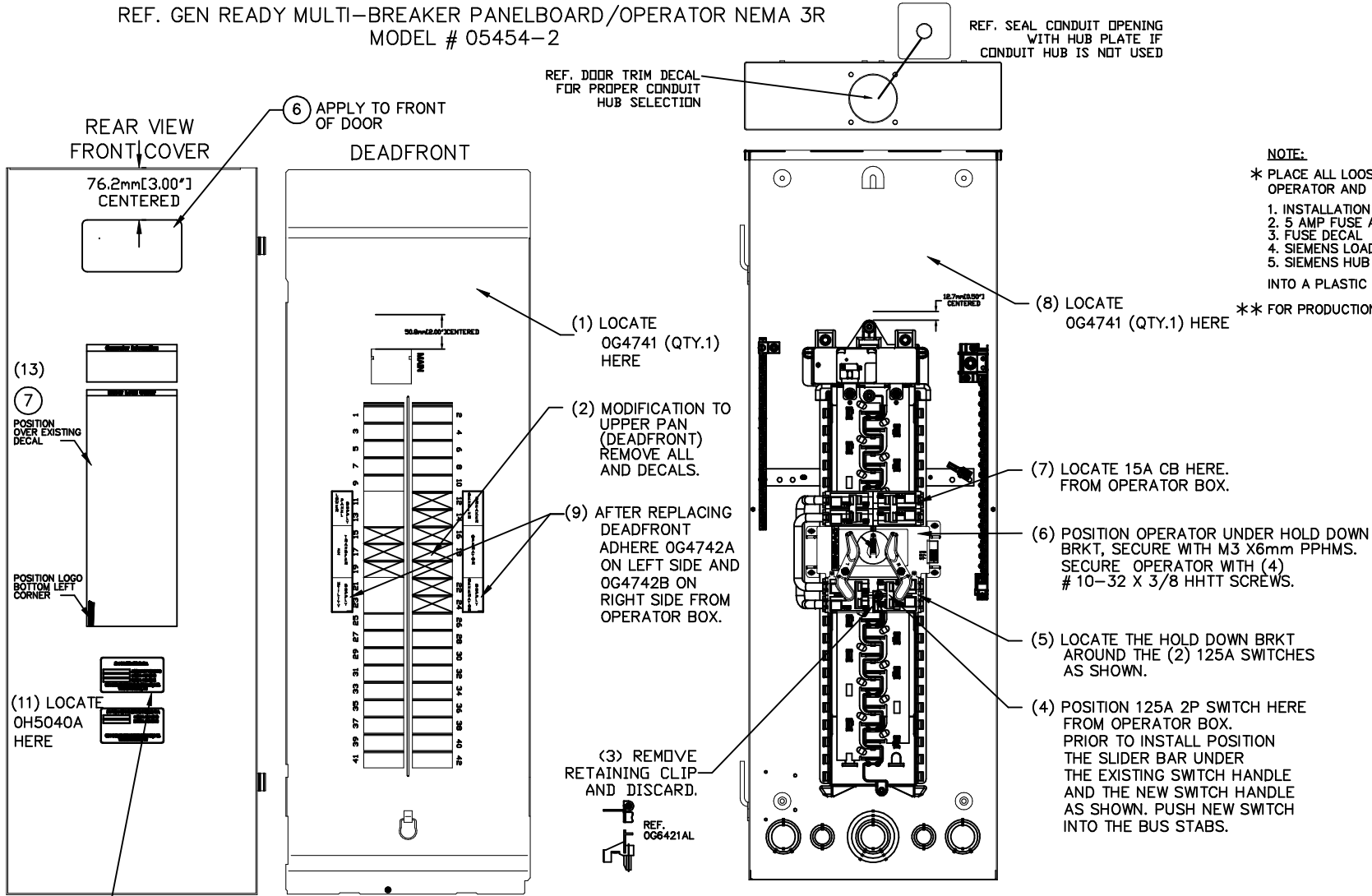
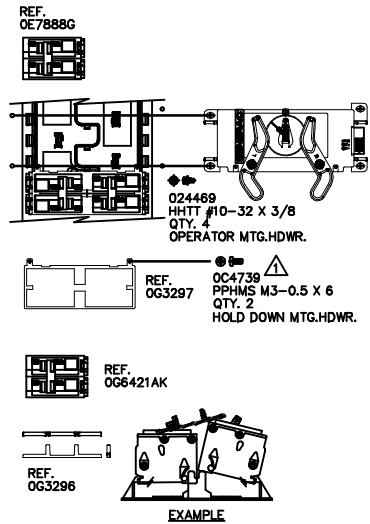


# GROUP B

REF. GEN READY MULTI-BREAKER PANELBOARD/OPERATOR NEMA 3R  
MODEL # 05454-2



**NOTE:**  
\* PLACE ALL LOOSE ITEMS REMAINING WITH THE OPERATOR AND THE LOAD CENTER:  
1. INSTALLATION INSTRUCTION  
2. 5 AMP FUSE ASSEMBLY  
3. FUSE DECAL  
4. SIEMENS LOAD CENTER BREAKER DECAL AND INSTRUCTION.  
5. SIEMENS HUB PLATE AND INSTRUCTION.  
INTO A PLASTIC BAG AND PLACE INSIDE LOAD CENTER DOOR.  
\*\* FOR PRODUCTION TESTING ONLY. (DO NOT SHIP WITH UNIT)



**TORQUE SPECIFICATIONS**  
 ▲ TORQUE TO 20 LB-IN. MIN.  
 ▲ TORQUE TO 24-30 LB-IN. MIN.  
 ▲ TORQUE TO 45-50 LB-IN. MIN.

REVISION: -A-  
DATE: 04/19/11

**EXPLODED VIEW:  
GENREADY MULTI-BKR LC PB W/OPR NEMA 3R  
DRAWING #: 0J1499A**

**EXPLODED VIEW: GENREADY MULTI-BKR LC PB W/OPR NEMA 3R  
DRAWING #: 0J1499A**

**GROUP B**

**APPLICABLE TO:**

<b>ITEM</b>	<b>PART #</b>	<b>QTY.</b>	<b>DESCRIPTION</b>
1	0G6420	1	EZ TRANSFER OPERATOR
2	0H4975	1	GEN READY MULTI-BKR LC PANELBD NEMA 3R
3	0G6215D	1	DECAL, GEN READY LC SERIAL NUMBER
4	044075	1	BAG ZIP 10 X 12 2MIL
5	0G4745	1	PRODUCTION TEST PROCEDURE
6	0H5371	1	DECAL BRAND GENREADY
7	0J0777	1	DECAL GEN-READY MULTI-BKR