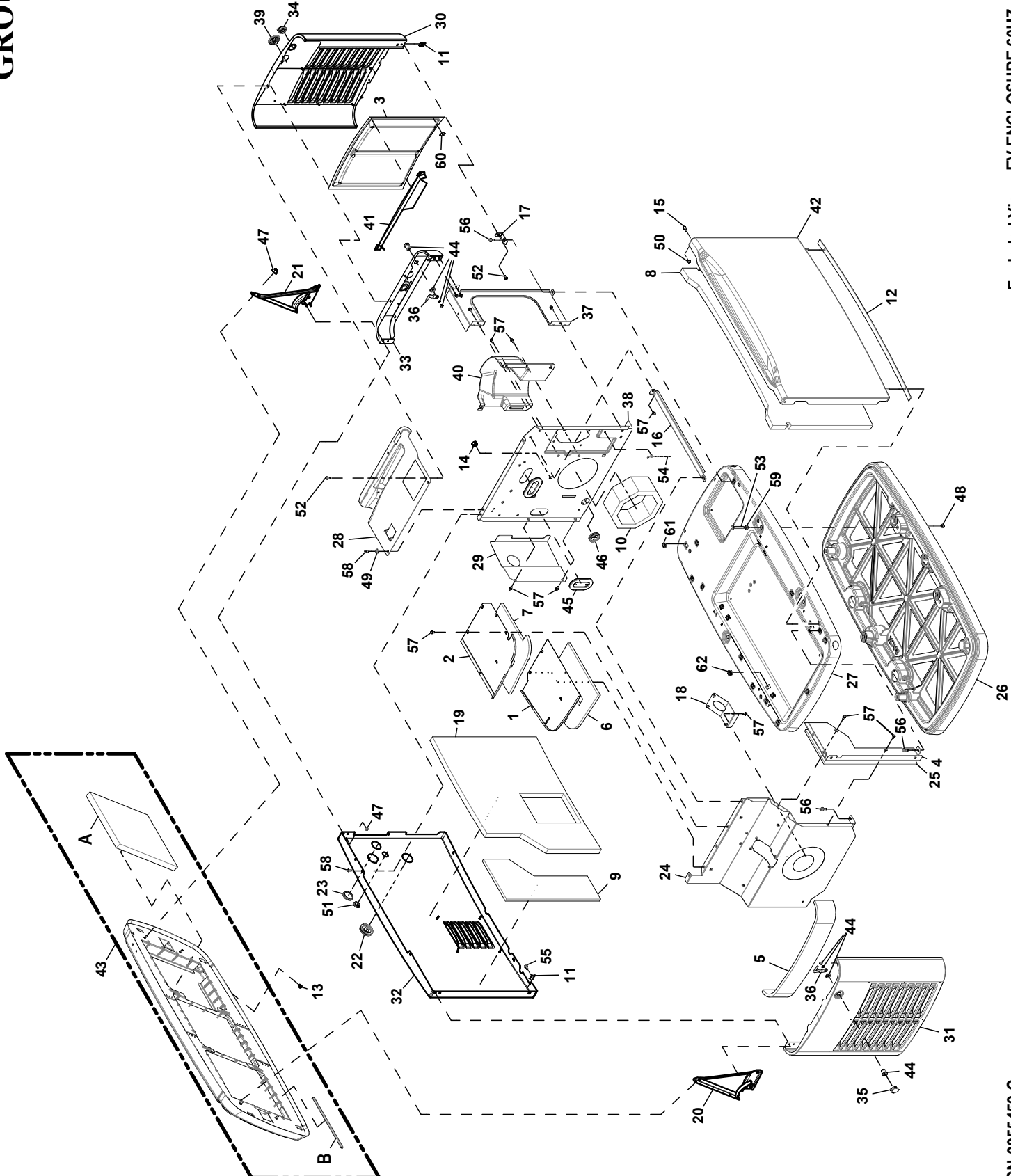


GROUP EV



Exploded View : EV ENCLOSURE 60HZ
Drawing No. : A000973386

EXPLODED VIEW: EV ENCLOSURE 60HZ

DRAWING #: A0000973386

GROUP EV

| ITEM | PART# | QTY. | DESCRIPTION |
|------|-------------|------|---|
| 1 | 0G68110ST03 | 1 | COVER, BACK EXHAUST ENCLOSURE |
| 2 | 0G68120ST03 | 1 | COVER, FRONT EXHAUST ENCLOSURE |
| 3 | 0G7258 | 2 | SCREEN - HSB LOUVERS |
| 4 | 0G66230ST03 | 1 | FRONT EXHAUST SHIELD (14, 18KW) |
| | 0G74210ST03 | 1 | FRONT EXHAUST SHIELD (10, 20- 24KW, 15KW ECOGEN) |
| | A0001846364 | 1 | ST03 FRONT EXHAUST SHIELD FAR MOUNT (26KW) |
| 5 | 0G7775 | 1 | FOAM, EXHAUST END PANEL |
| 6 | 0G7776 | 1 | FOAM, TOP BACK EXHAUST COVER |
| 7 | 0G7778 | 1 | FOAM, TOP FRONT EXHAUST COVER |
| 8 | A0000342586 | 1 | INSULATION FRONT PANEL W/ PSA |
| 9 | 0G7842 | 1 | FOAM, BACK PANEL, MUFFLER COM |
| 10 | 0G7880 | 1 | FOAM DUCT ENGINE DIVIDER (10KW) |
| | 0F8847 | 1 | FOAM DUCT ENGINE DIVIDER (14, 18-26KW, 15KW ECOGEN) |
| 11 | 0G7252 | 2 | CLIP U M6-1.0 |
| 12 | 0G7890 | 1 | GASKET, HSB DOOR SEAL |
| 13 | 0G8131 | 1 | PLUG 6.35 BLACK |
| 14 | 0E1534 | 1 | PLUG PLASTIC 0.687" (14, 18-26KW, 15KW ECOGEN) |
| 15 | 0G9386 | 2 | SPACER 2008 HSB DOOR |
| 16 | 0H71940ST03 | 1 | CROSS SUPPORT HSB (10KW) |
| | 10000018921 | 1 | ST03 CROSS SUPPORT COMMON BAR (14, 18-26KW, 15KW ECOGEN) |
| 17 | 10000004442 | 1 | BRACKET L HSB |
| 18 | 0J6184A | 1 | GASKET EXHAUST DIVIDER 2013 HSB (10KW) |
| | 0J7546A | 1 | GASKET EXHAUST PANEL (14, 18KW) |
| | 0J7546B | 1 | GASKET EXHAUST PANEL (15KW ECOGEN) |
| | 10000038158 | 1 | GASKET EXHAUST PANEL (20-24KW) |
| | A0001799485 | 1 | GASKET EXHAUST PANEL HSB 315 (26KW) |
| 19 | A0000341610 | 1 | INSULATION BACK PANEL W/ PSA |
| 20 | 10000004134 | 1 | HINGE ASSY EXHAUST END |
| 21 | 10000004126 | 1 | HINGE ASSY INTAKE END |
| 22 | 0J7724 | 1 | GROMMET FUEL LINE 3/4" |
| 23 | 0J9137 | 1 | PLUG STEEL 1.750 |
| 24 | 0K3340EST03 | 1 | EXHST DVDR PNL WLDNT (10KW) |
| | 0K3340BST03 | 1 | EXHST DVDR PNL WLDNT (14, 18KW) |
| | 0K3340CST03 | 1 | EXHST DVDR PNL WLDNT (15KW ECOGEN) |
| | A0000196516 | 1 | ST03 WLDMNT PNL DVDR EXHST HSB MID MOUNT (20-24KW) |
| | A0001793835 | 1 | ST0R WLDMNT PNL DVDR EXHST FAR MOUNT (26KW) |
| 25 | 0G7843 | 1 | FOAM, FRONT EXHAUST SHIELD (14, 18KW) |
| | 0K7663 | 1 | FOAM EXHAUST FRONT PANEL (10, 20-24KW, 15KW ECOGEN) |
| | A0001846368 | 1 | FOAM EXHAUST FRONT PANEL FAR MOUNT (26KW) |
| 26 | 0L2183 | 1 | MOUNTING PAD |
| 27 | A0001874030 | 1 | GN13 BASE ADDITIONAL SQUARE CUTOUTS HSB (BISQUE) |
| | A0002052806 | 1 | GN14 BASE ADDITIONAL SQUARE CUTOUTS HSB (LIGHT GREY) |
| | A0001874031 | 1 | GN19 BASE ADDITIONAL SQUARE CUTOUTS HSB (DARK GREY) |
| | 0L2531AGN13 | 1 | BASE ECOGEN HSB (BISQUE) (15KW ECOGEN) |
| 28 | 0L2663AST03 | 1 | CONTROLLER FASCIA 426/530 HSB (10KW) |
| | 0L2663BST03 | 1 | CONTROLLER FASCIA 999 HSB (14, 18-26KW, 15KW ECOGEN) |
| 29 | 0L4359 | 1 | SHIELD 426/530 FUEL REGULATOR (10KW) |
| | 0L4358 | 1 | SHIELD, 999 FUEL REGULATOR (14, 18-26KW, 15KW ECOGEN) |
| 30 | 0L4445AAL13 | 1 | WELDMENT INTAKE END PNL ALUM (BISQUE) |
| | 0L4445AAL14 | 1 | WELDMENT INTAKE END PNL ALUM (LIGHT GREY) |
| | 0L4445AAL19 | 1 | WELDMENT INTAKE END PNL ALUM (DARK GREY) |
| 31 | 0L4449AAL13 | 1 | WELDMENT EXHAUST END PNL ALUM (BISQUE) |
| | 0L4449AAL14 | 1 | WELDMENT EXHAUST END PNL ALUM (LIGHT GREY) |
| | 0L4449AAL19 | 1 | WELDMENT EXHAUST END PNL ALUM (DARK GREY) |
| 32 | A0001874034 | 1 | AL13 WELDMENT BACK PNL AUX LG FLANGE CUT (BISQUE) |
| | A0002050139 | 1 | AL14 WELDMENT BACK PNL AUX LG FLANGE CUT (LIGHT GREY) |
| | A0001874035 | 1 | AL19 WELDMENT BACK PNL AUX LG FLANGE CUT (DARK GREY) |
| 33 | 10000007128 | 1 | ST03 WLDMNT BRCKT HSB TOP SUPPORT E-STOP |
| 34 | 0L5111 | 1 | LOCK CAP INTAKE |
| 35 | 0L5112 | 1 | LOCK CAP EXHAUST |
| 36 | A0000481250 | 2 | LOCK PAWL |
| 37 | 0L57890ST03 | 1 | VERTICAL SUPPORT STRUCTURE (10KW) |
| 38 | 0L57930ST03 | 1 | PANEL ENGINE DIVIDER 426 HSB (10KW) |
| | 10000013628 | 1 | ST03 ENGINE DIVIDER PANEL 999 HSB AUX SW (14, 18-24KW, 15KW ECOGEN) |
| | A0002061163 | 1 | ST03 ENGINE DIVIDER PNL 999 WIDE SNORKEL (26KW) |

EXPLODED VIEW: EV ENCLOSURE 60HZ

DRAWING #: A0000973386

GROUP EV

| ITEM | PART# | QTY. | DESCRIPTION |
|------|-------------|--------|--|
| 39 | 0L5966 | 1 | LENS HOLDER, W/GASKET |
| 40 | 0L6156 | 1 | INTAKE BAFFLE HSB (14, 18-24KW, 15KW ECOGEN) |
| | A0000061670 | 1 | INTAKE BAFFLE HSB TRIMMED (20-26KW) |
| 41 | 0L62580ST03 | 1 | HSB INTAKE DEFLECTOR |
| 42 | 0L6470BAL13 | 1 | WELDMENT FRONT PANEL (BISQUE) |
| | 0L6470BAL14 | 1 | WELDMENT FRONT PANEL (LIGHT GREY) |
| | 0L6470BAL19 | 1 | WELDMENT FRONT PANEL (DARK GREY) |
| 43 | 0L6732C | 1 | ROOF ASSY ALUMINUM BISQUE (BISQUE) |
| | 0L6732A | 1 | ROOF ASSY ALUMINUM GREY (LIGHT GREY) |
| | 0L6732B | 1 | ROOF ASSY ALUMINUM IND GREY (DARK GREY) |
| A | A0000335102 | 3 | INSULATION ROOF PANEL W/ PSA |
| B | 0L6368 | 10.5FT | GASKET, EXTRUDED TRIM |
| 44 | A0000481249 | 2 | LOCK ASM 1/4 TURN CAM |
| 45 | 0D3472 | 2 | GROMMET OVAL 31.75 X 50.8 |
| 46 | 0E1330 | 1 | GROMMET, 38.1 DIA. CROSS SLIT |
| 47 | 0D3700 | 8 | NUT FLANGE M6-1.0 NYLOK |
| 48 | G022241 | 4 | NUT HEX 3/8-16 STEEL |
| 49 | 0A1658 | 1 | WASHER LOCK SPECIAL 1/4" |
| 50 | G052857 | 2 | NUT TOP LOCK FL M6-1.0 |
| 51 | G025034 | 1 | PLUG STEEL 1.0625 |
| 52 | 10000000649 | 3 | SCREW BFHSC M6-1.0 X 16 CLEAR ZP |
| 53 | G026082 | 4 | SCREW HHC 3/8-16 X 2-1/4 G5 |
| 54 | 0G0132 | 1 | PUSH BUTTON WIRE TIE |
| 55 | 0G1705 | 1 | SCREW HHFC M6-1.0 X 14 G8.8 |
| 56 | 0C8566 | 11 | SCREW HHFC M6-1.0 X 20 G8.8 |
| 57 | G090388 | 29 | SCREW HHTT M6-1.0 X 12 ZINC (10KW) |
| | G090388 | 25 | SCREW HHTT M6-1.0 X 12 ZINC (14, 18-26KW, 15KW ECOGEN) |
| 58 | 10000042784 | 4 | SCREW SWT M6-1.0 X 16 ZK W/NO WASHER |
| 59 | 0A5768 | 4 | WASHER FLAT M10 HEAVY DUTY |
| 60 | 0D7176 | 16 | WASHER SELF LOCKING 1"DIA 12GA |
| 61 | 0G7225 | 15 | PANEL CLIP, M6-1.00 EXPANSION (10, 14, 18-26KW) |
| | 0G7225 | 15 | PANEL CLIP, M6-1.00 EXPANSION (15KW ECOGEN) |
| 62 | 0G7225A | 8 | PANEL CLIP - 5/16-18 EXPANSION |