

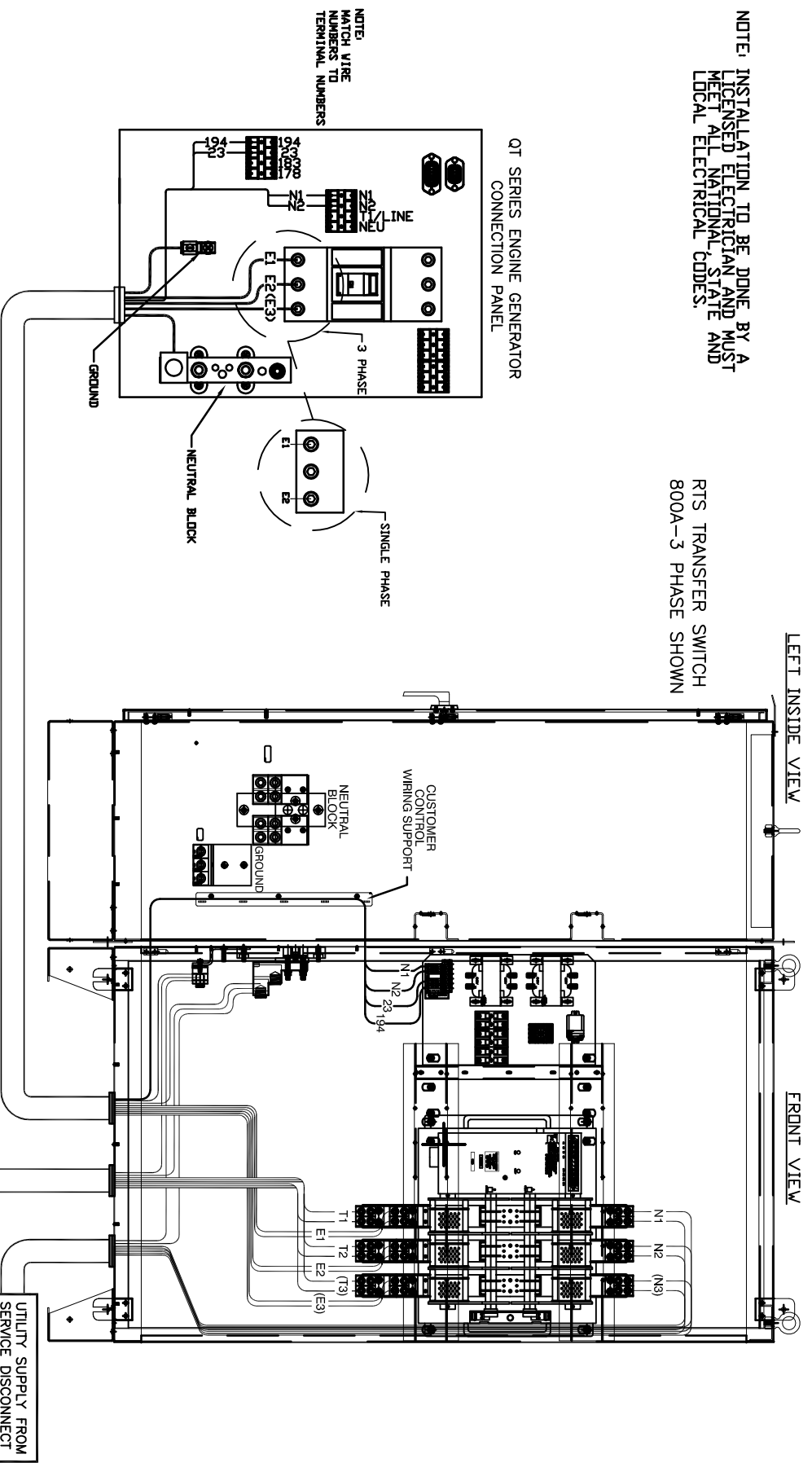
# GROUP G

NOTE: INSTALLATION TO BE DONE BY A LICENSED ELECTRICIAN AND MUST MEET ALL NATIONAL, STATE AND LOCAL ELECTRICAL CODES.

RTS TRANSFER SWITCH  
800A-3 PHASE SHOWN

LEFT INSIDE VIEW

FRONT VIEW



NOTE:  
N3, E3 AND T3 WIRES ARE ONLY  
USED ON 3 PHASE SYSTEMS.

LIQUID COOLED INSTALLATION

EXPLODED VIEW: RTS 600-800A

DRAWING #: 0J0911

APPLICABLE TO:

GROUP G

**THIS PAGE IS LEFT INTENTIONALLY BLANK**